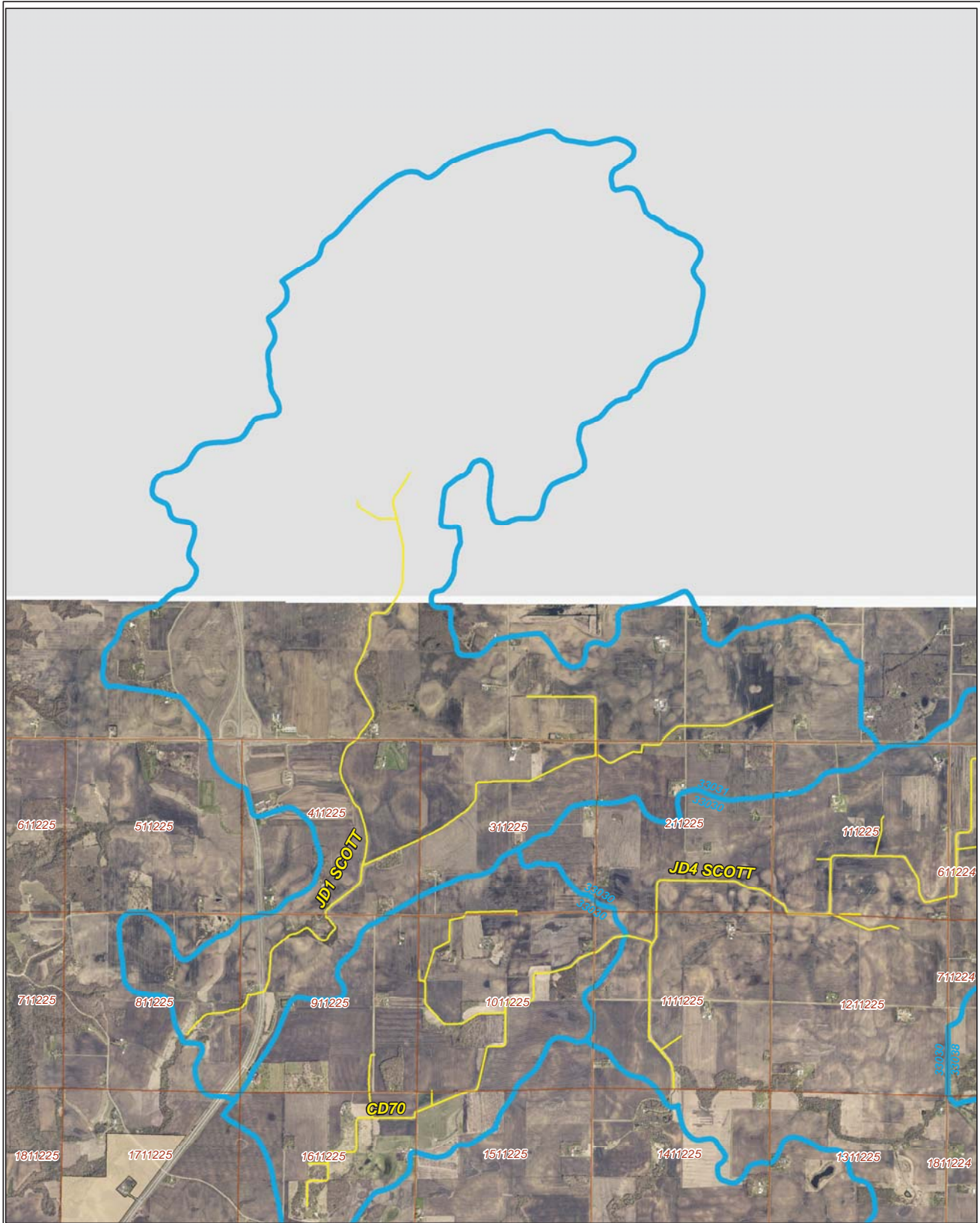






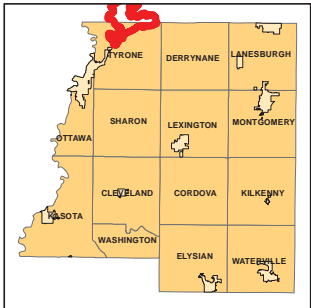
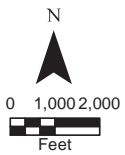
Ditch Watershed



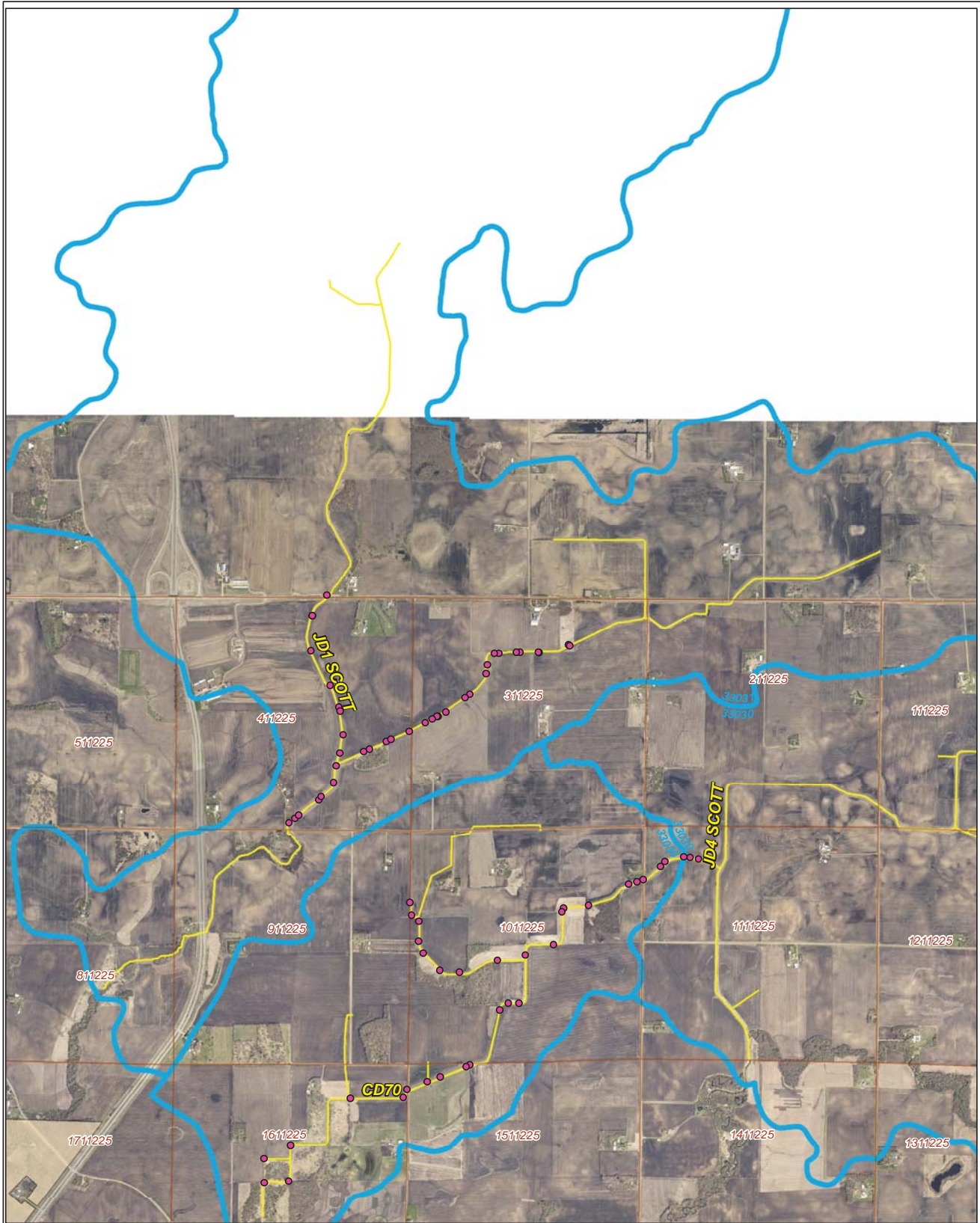
Legend

-  Sections
-  Cities
-  Ditches
-  Ditch Watershed

Ditch ID: 33031JC1
Acres: 6609.89



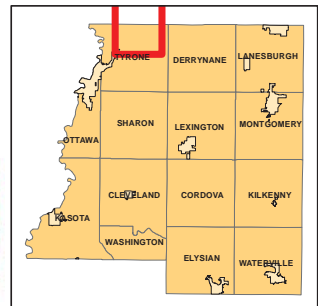
2006 Ditch Inventory



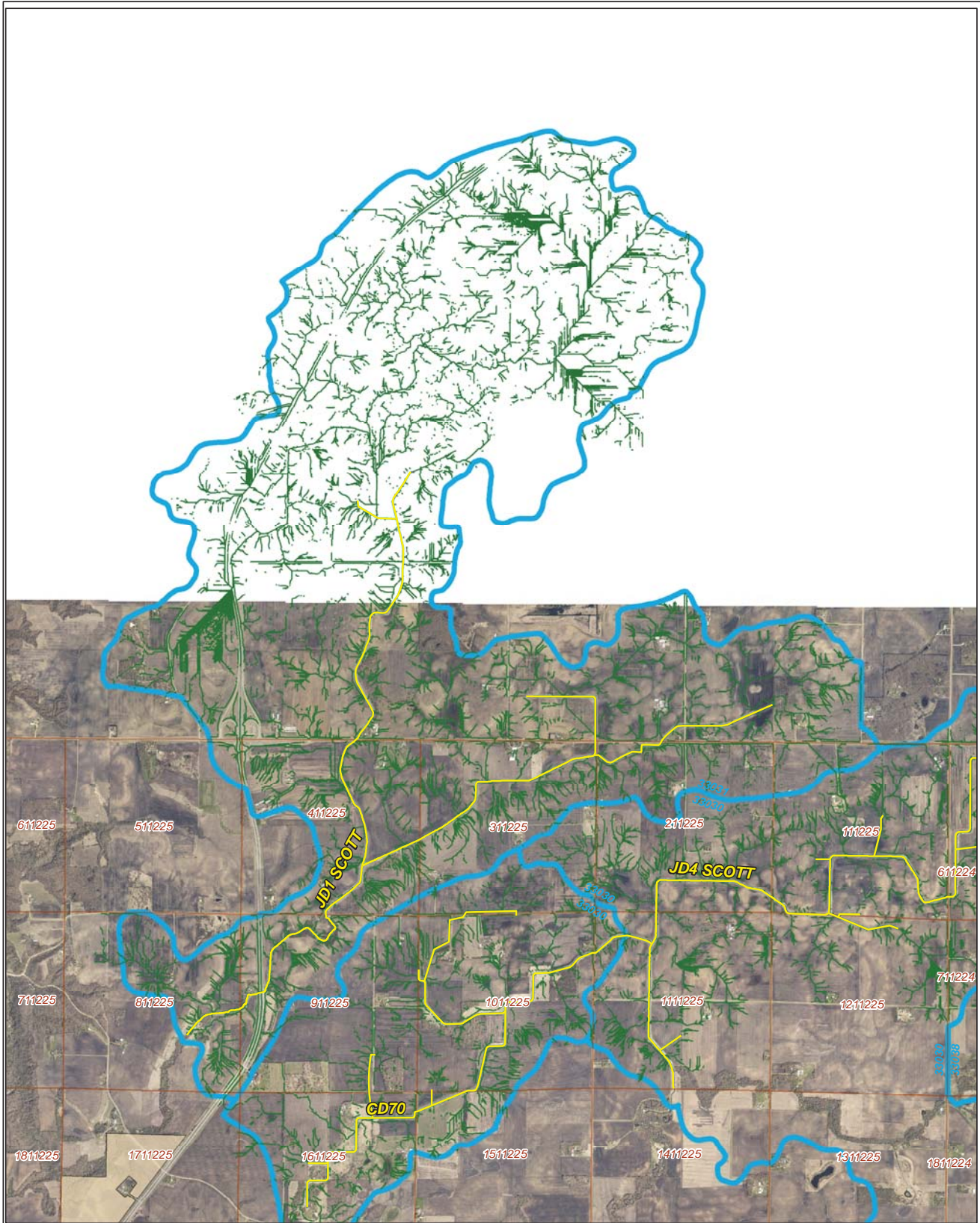
Legend

- Ditch Inventory
- Sections
- Cities
- Ditches
- Ditch Watershed






Ditch Name: JD1 SCOTT



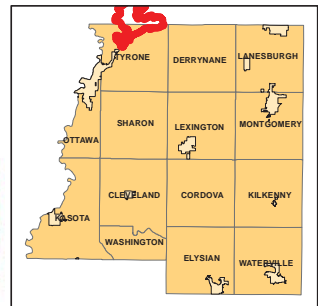
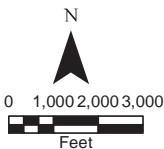
High Priority - Stream Power Index Sites



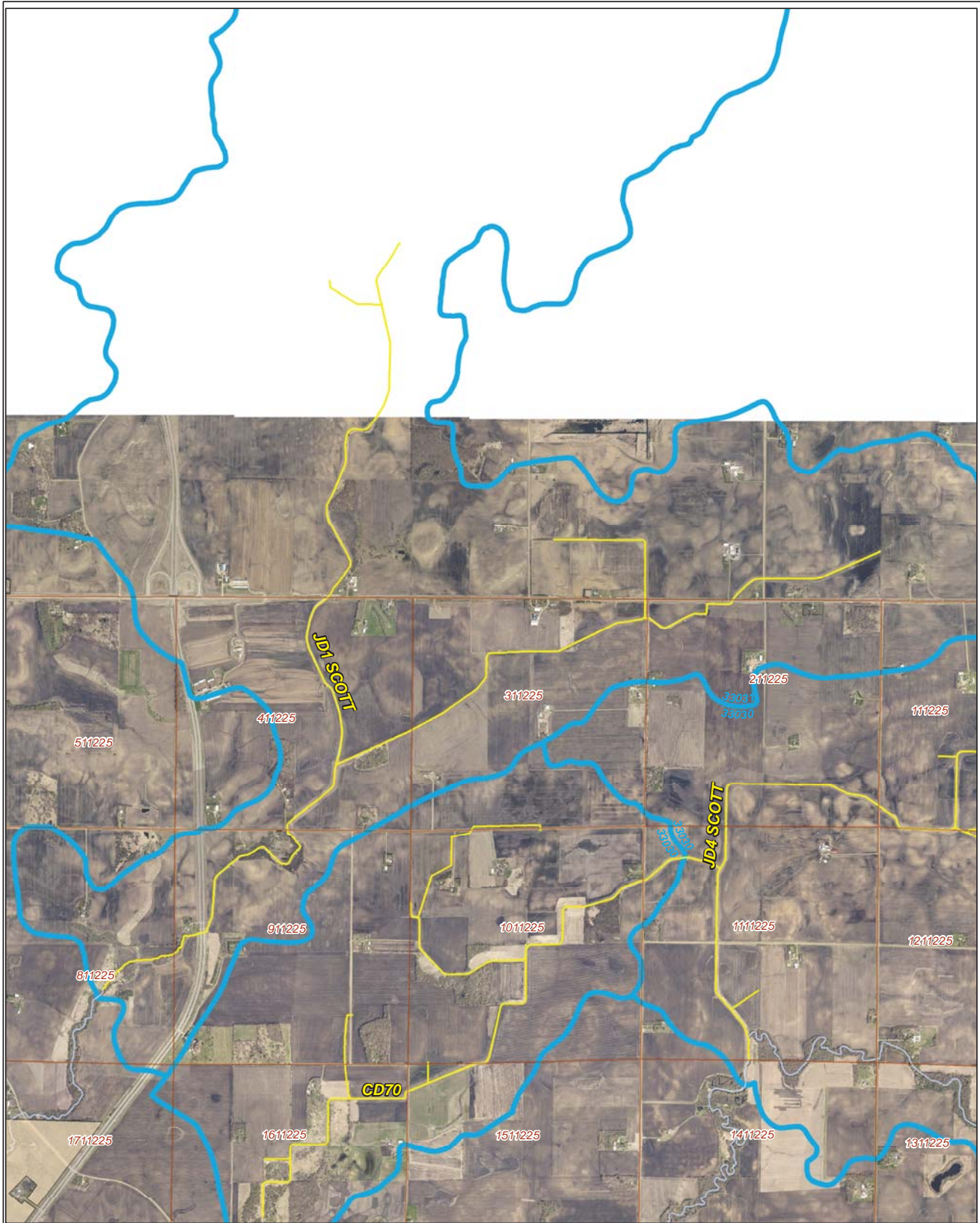
Legend

-  Sediment
-  Ditches
-  Sections
-  Cities
-  Ditch Watershed

Ditch Name: JC1

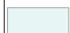







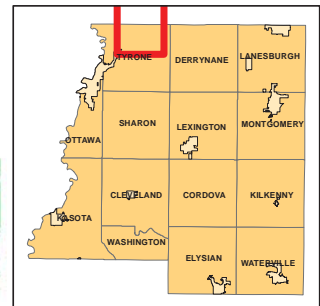
DNR Public Waters



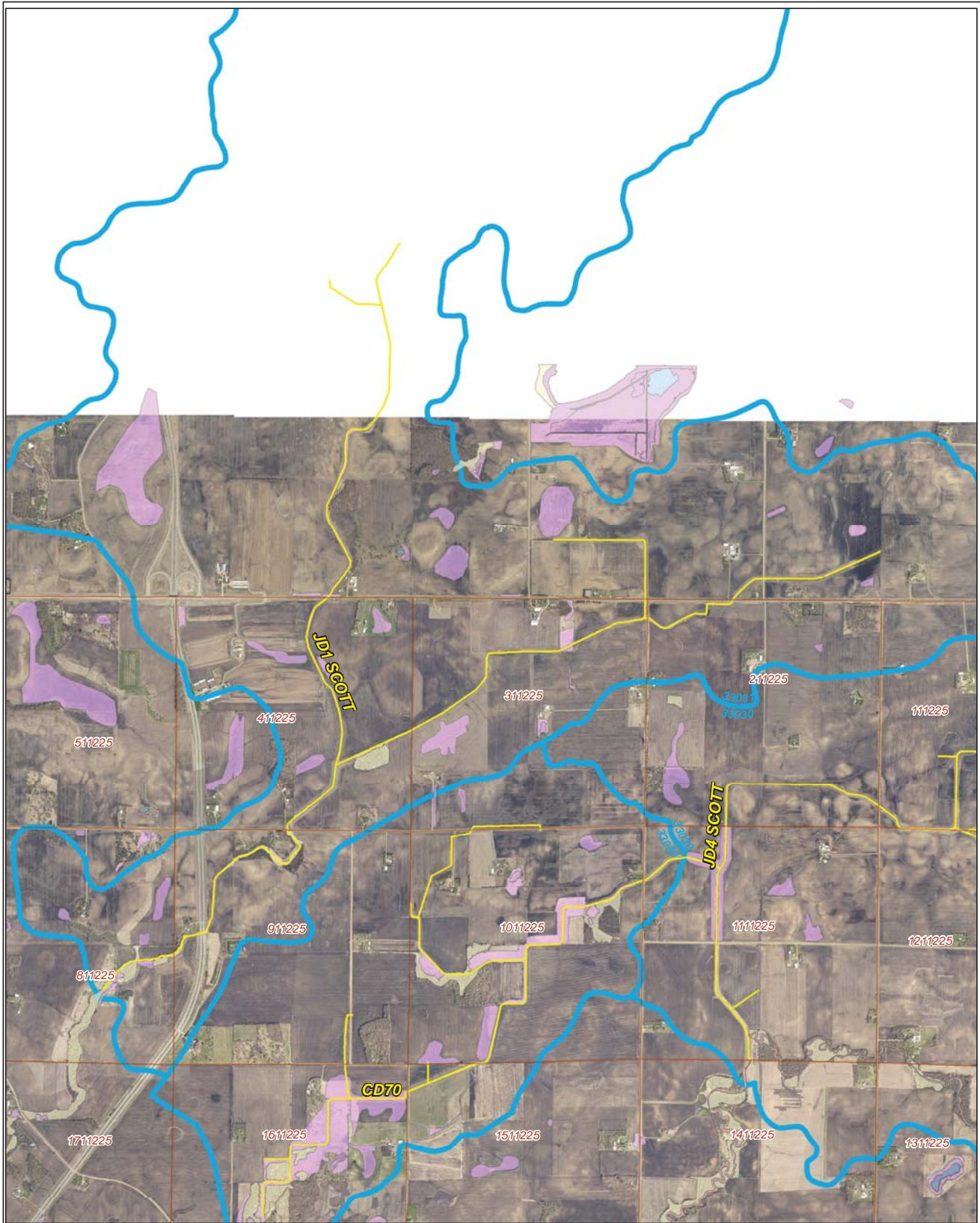
Ditch Name: JD1 SCOTT

Legend

-  DNR Public Lakes and Basins
-  DNR Rivers and Streams
-  Sections
-  Cities
-  Ditches
-  Ditch Watershed

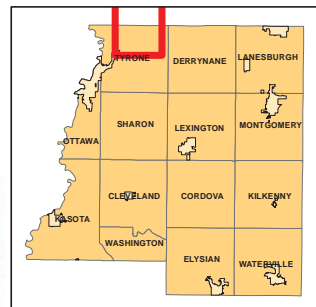


2015 Wetland Inventory

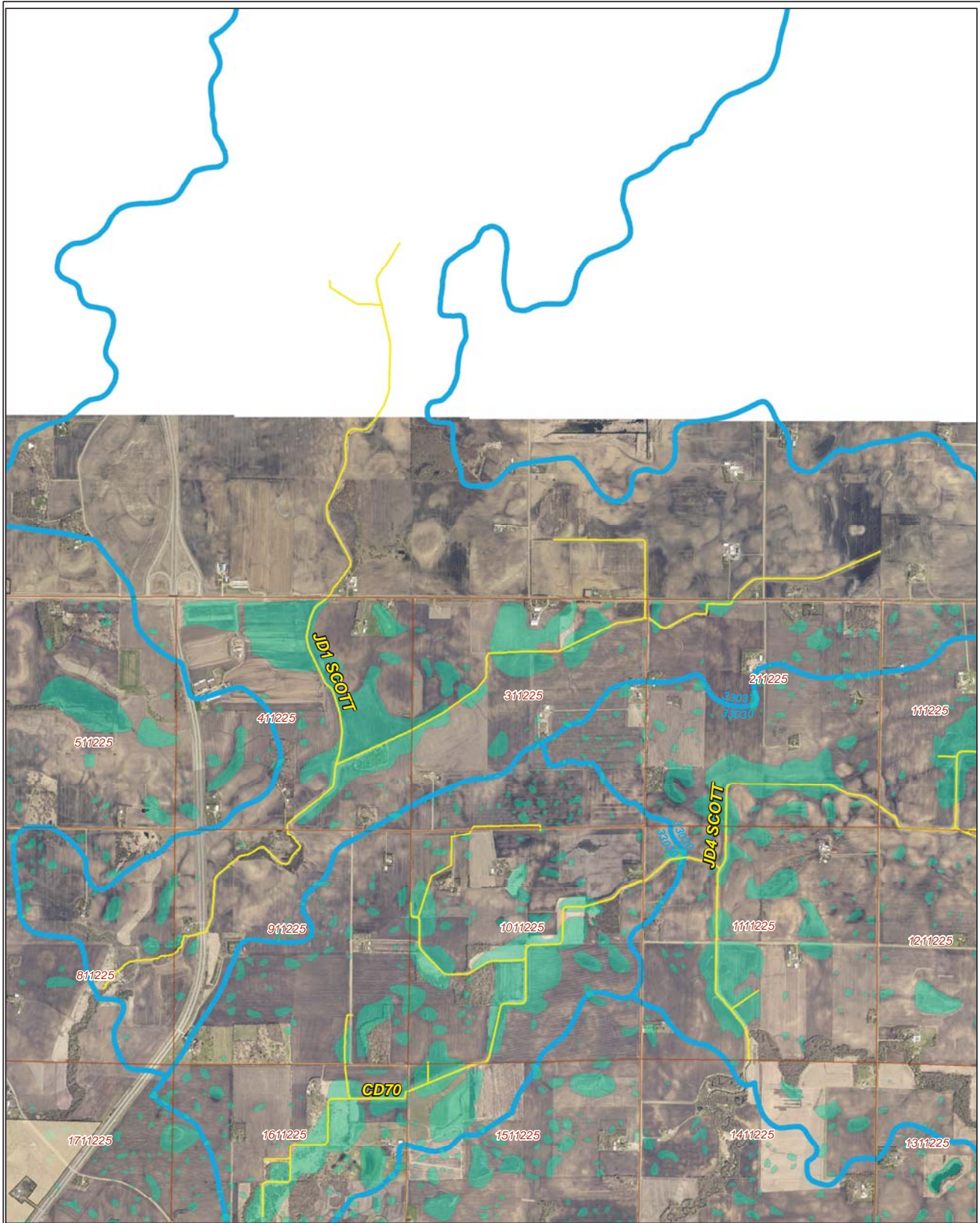


Ditch Name: JD1 SCOTT

Legend	
Wetland Type	
	Freshwater Emergent Wetland
	Freshwater Forested/Shrub Wetland
	Freshwater Pond
	Lake
	Riverine
	Sections
	Ditches
	Ditch Watershed



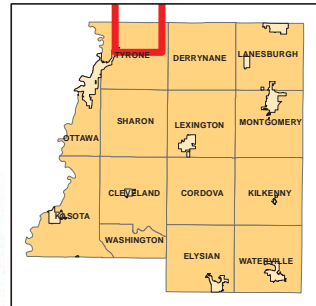
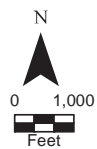
Restorable Wetlands



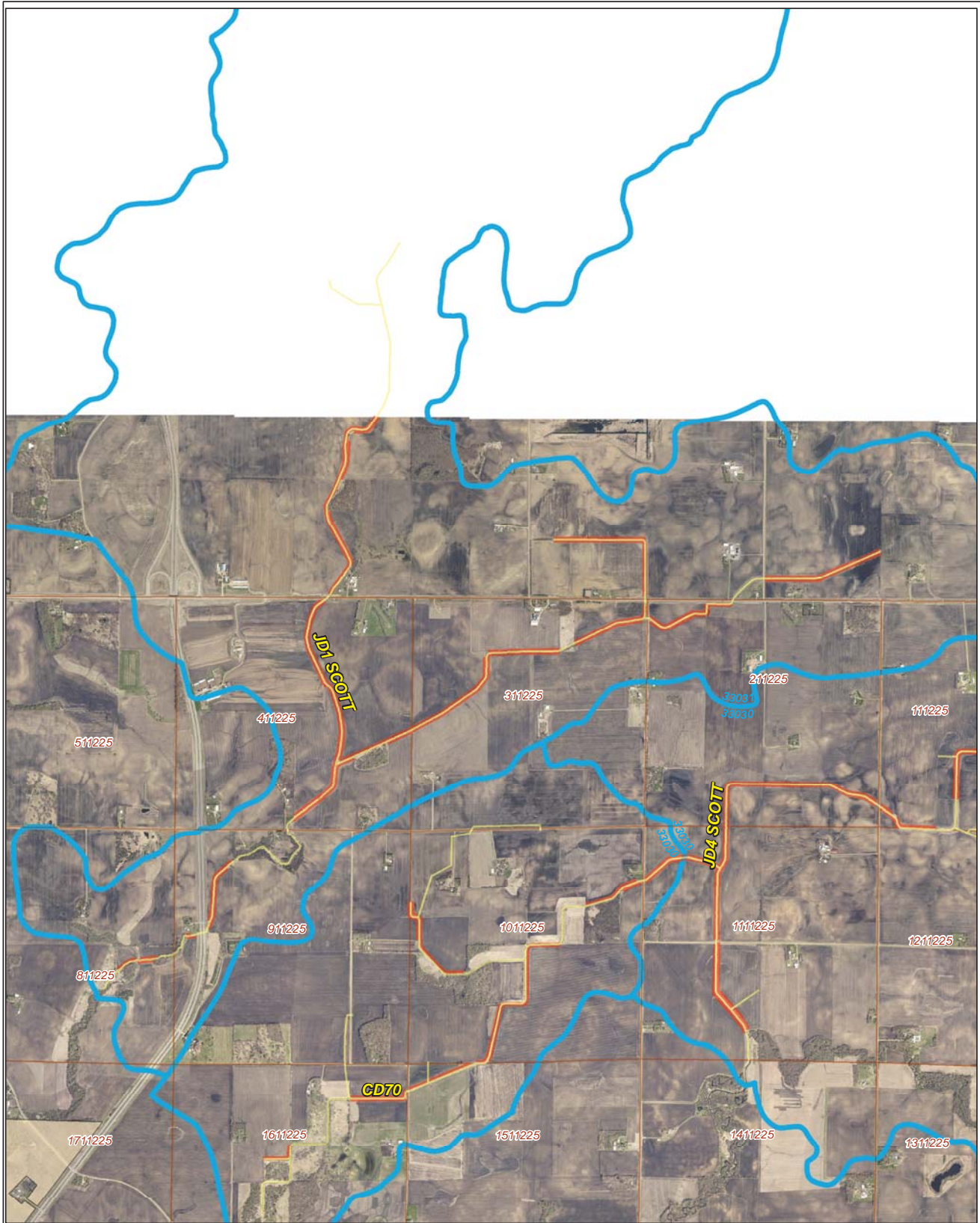
Ditch Name: JD1 SCOTT

Legend

- Retention Locations
- Sections
- Cities
- Ditches
- Ditch Watershed



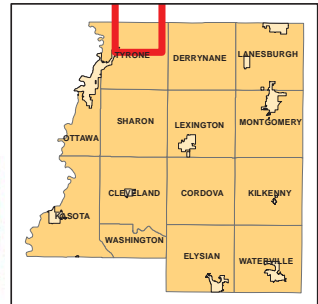
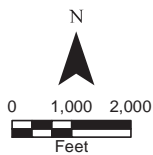
Ditch Buffer



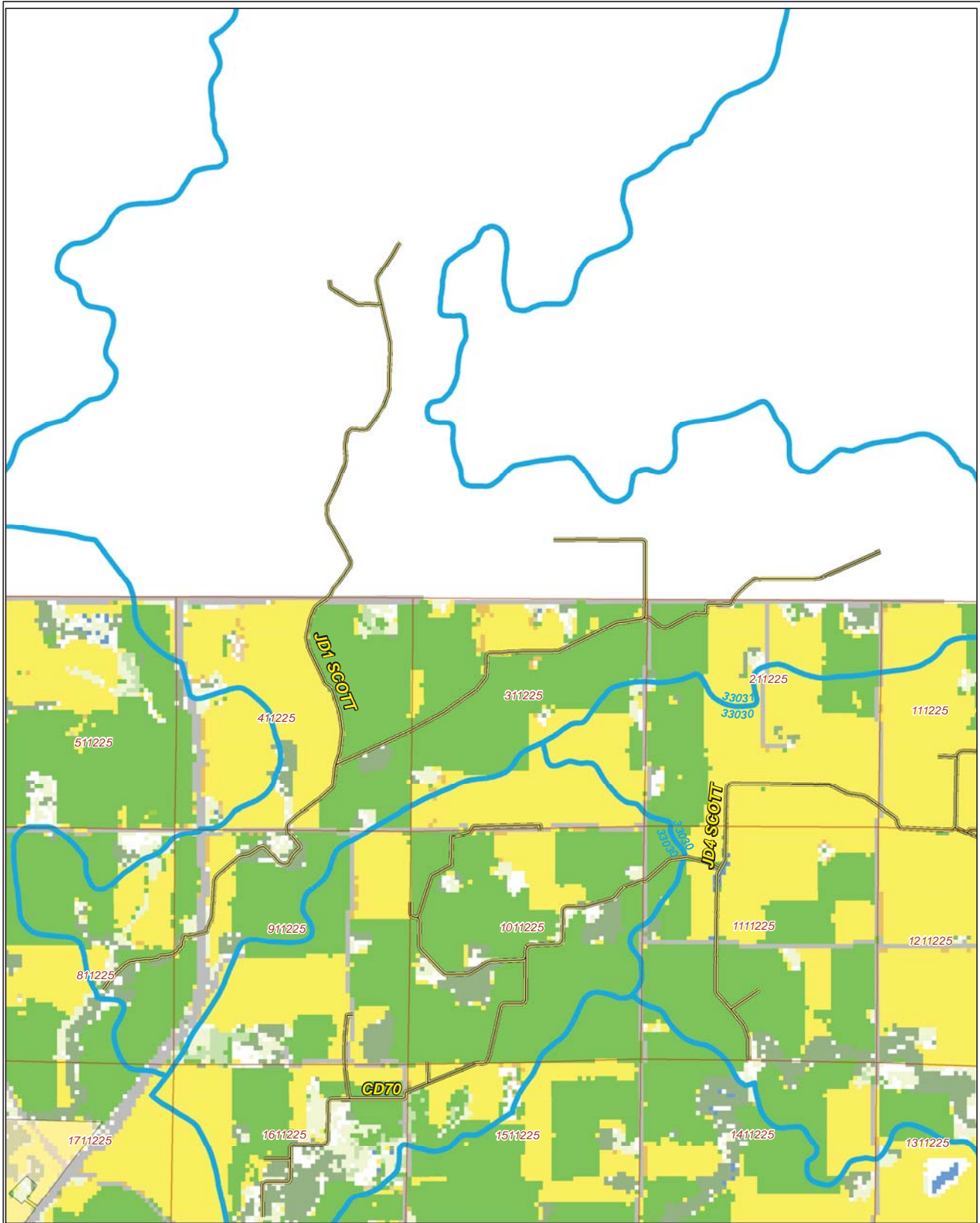
Legend

-  Ditches
-  Needs Buffer
-  Sections
-  Cities
-  Ditch Watershed

Ditch Name: JD1 SCOTT
Percent Buffered: %



2015 Crop Coverage



Ditch Name: JD1 SCOTT

Legend	
Coverage Type	<ul style="list-style-type: none"> Open Water Other Hay/Non Alfalfa Corn Peas Soybeans Forest Developed Area Spring Wheat Grass/Pasture Sweet Corn
	<ul style="list-style-type: none"> Sections Cities Ditches Ditch Watershed

