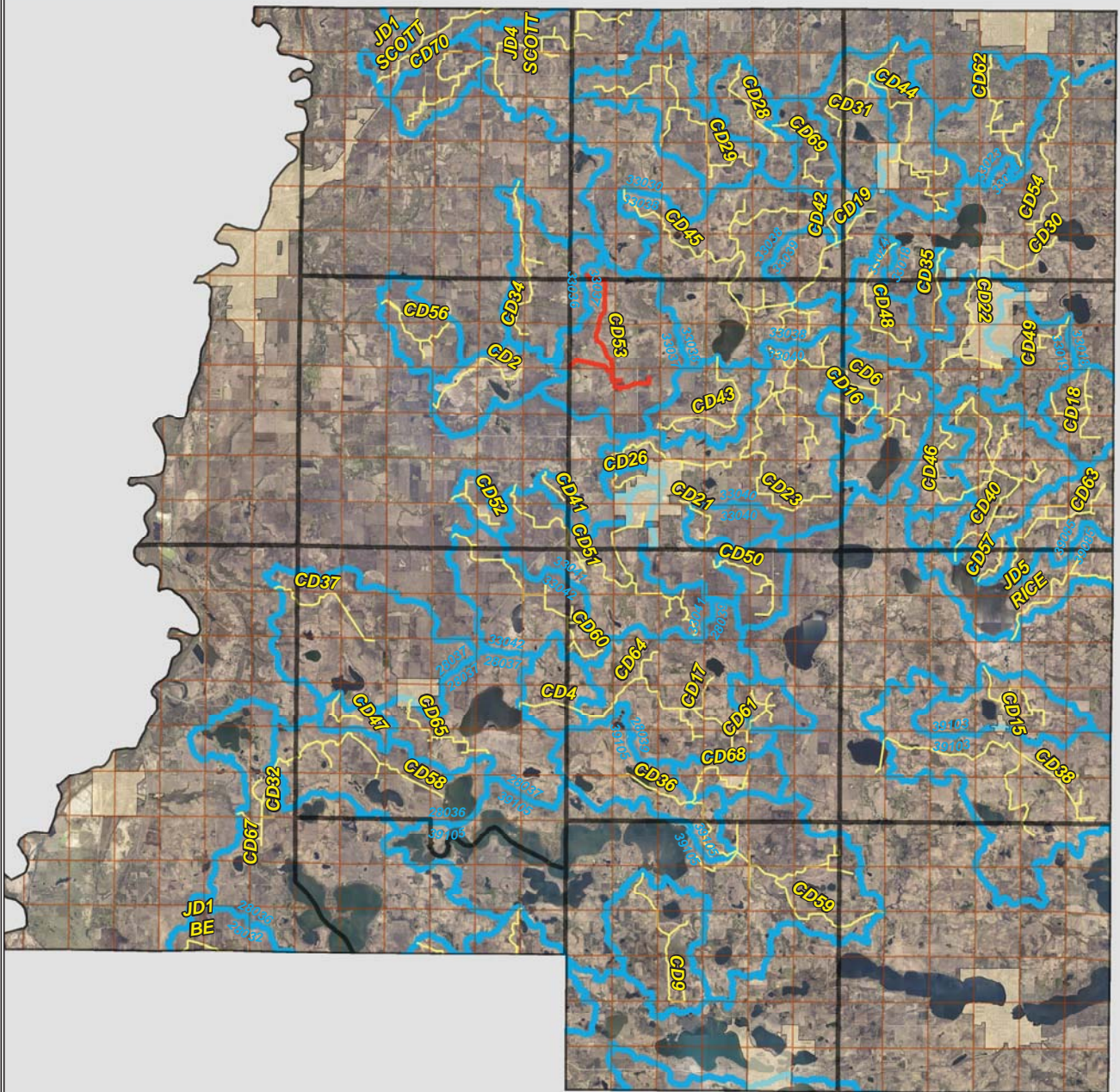


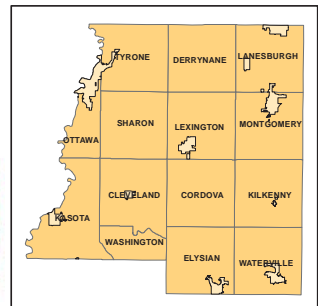
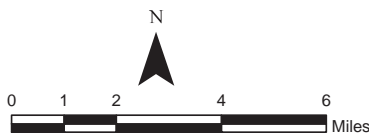
CD 53

LO PAYS FOR CULVERTS



Legend

- Sections
- Cities
- Ditches**
-
-
- Ditch Watershed



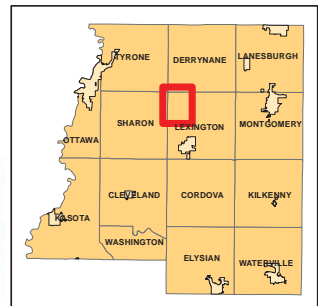
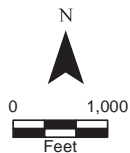
2006 Ditch Inventory



Legend

- Ditch Inventory
- Sections
- Cities
- Ditches
- Ditch Watershed




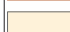

Ditch Name: CD53



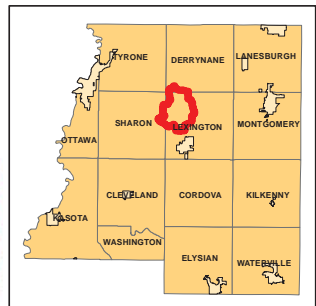
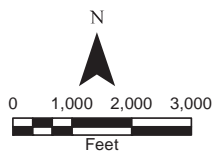
High Priority - Stream Power Index Sites



Legend

-  Sediment
-  Ditches
-  Sections
-  Cities
-  Ditch Watershed

Ditch Name: CD53

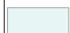







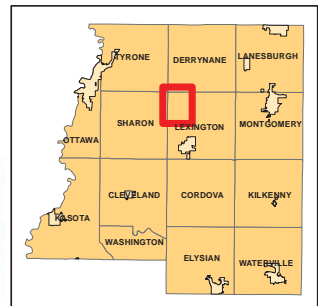
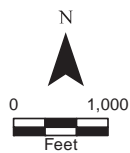
DNR Public Waters



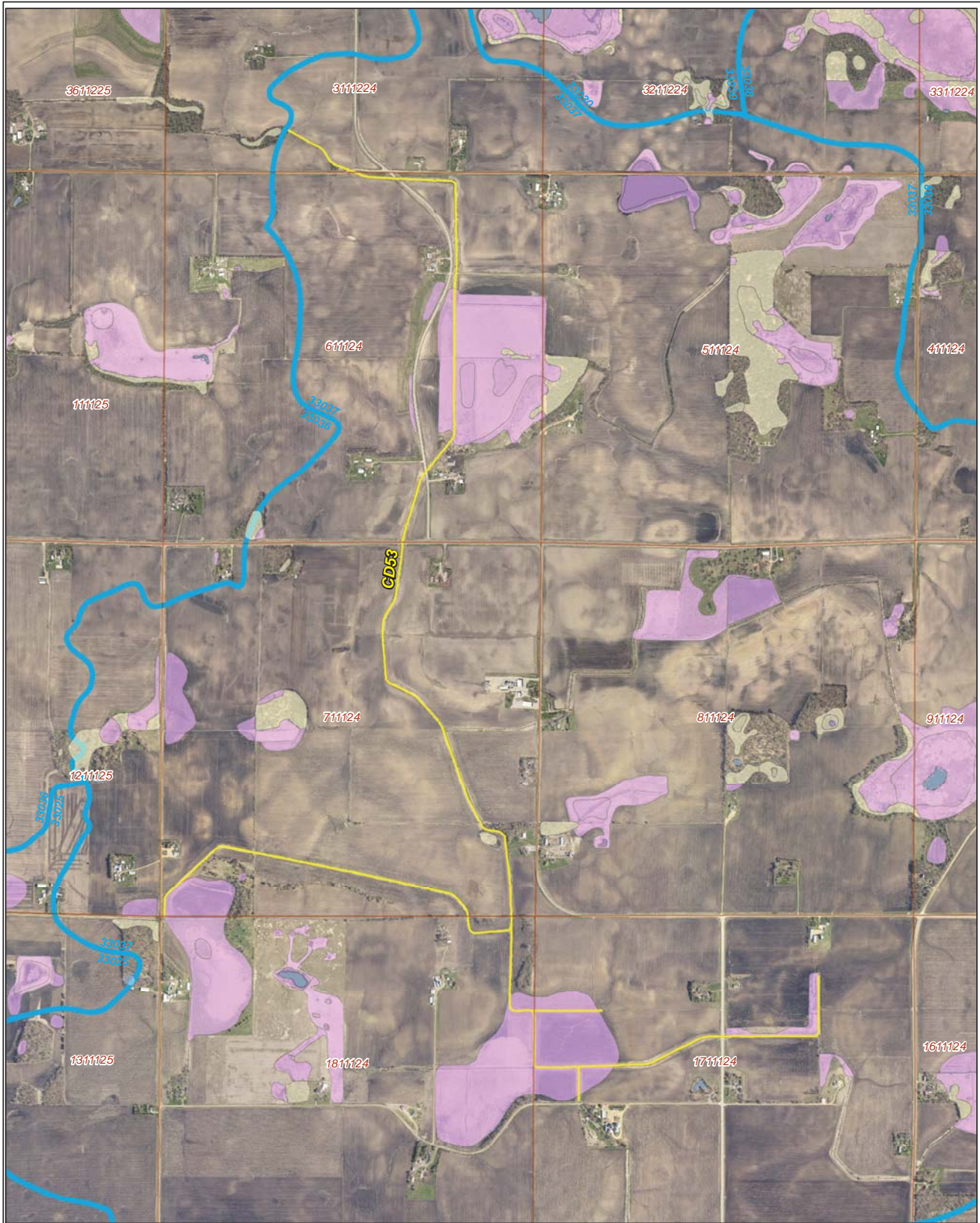
Ditch Name: CD53

Legend

-  DNR Public Lakes and Basins
-  DNR Rivers and Streams
-  Sections
-  Cities
-  Ditches
-  Ditch Watershed

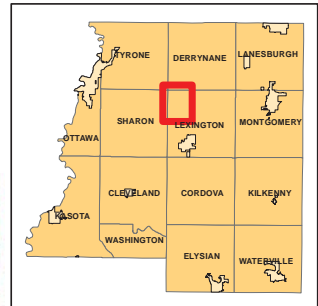
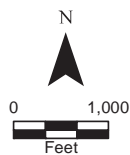


2015 Wetland Inventory

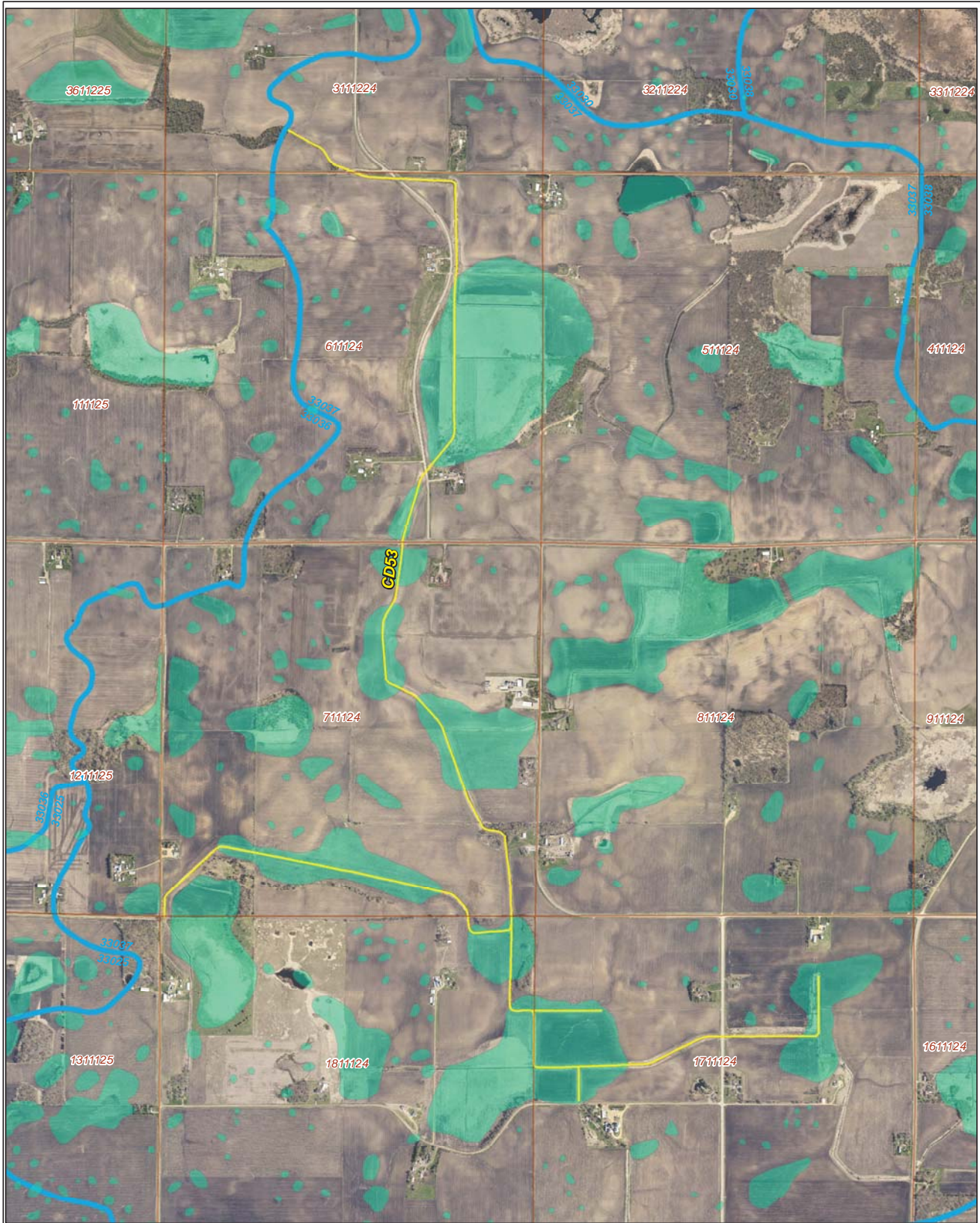


Ditch Name: CD53

Legend	
Wetland Type	
	Freshwater Emergent Wetland
	Freshwater Forested/Shrub Wetland
	Freshwater Pond
	Lake
	Riverine
	Sections
	Ditches
	Ditch Watershed



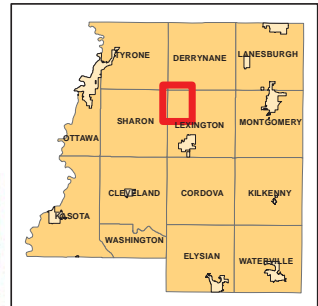
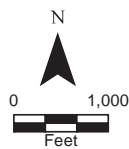
Restorable Wetlands



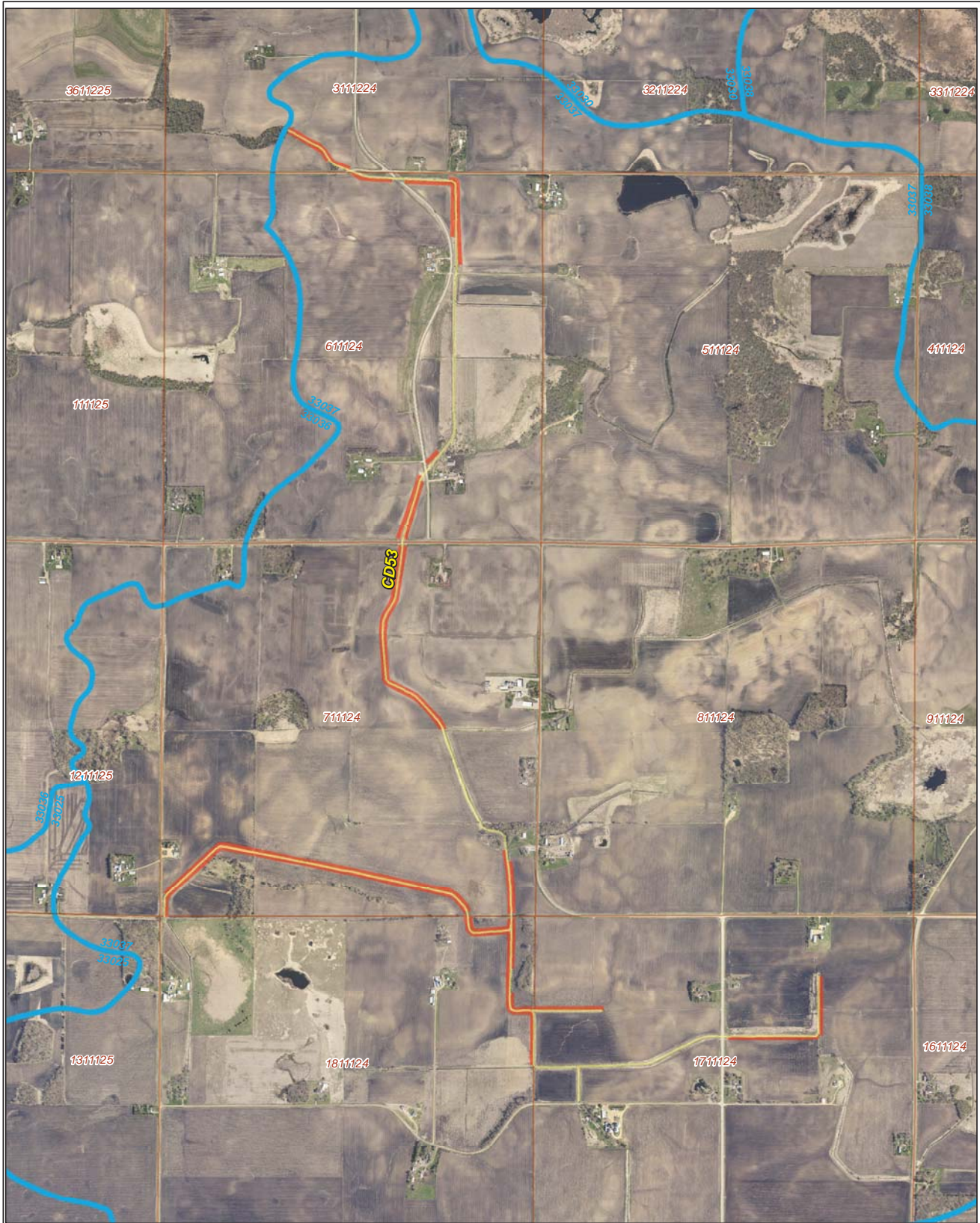
Ditch Name: CD53

Legend

- Retention Locations
- Sections
- Cities
- Ditches
- Ditch Watershed



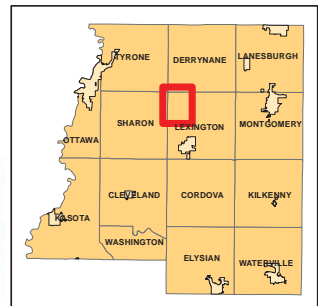
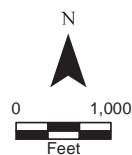
Ditch Buffer



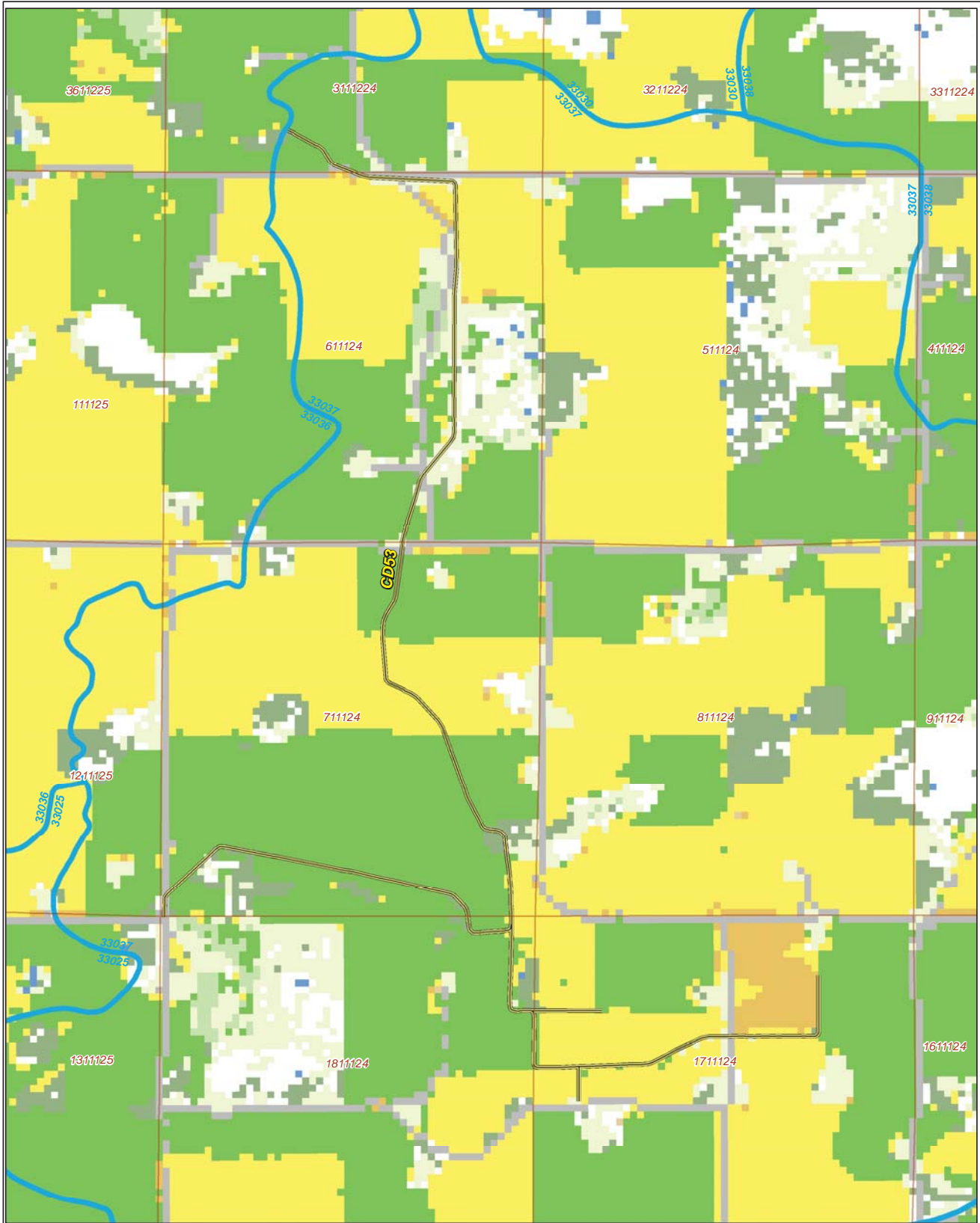
Legend

-  Ditches
-  Needs Buffer
-  Sections
-  Cities
-  Ditch Watershed

Ditch Name: CD53
Percent Buffered: 43.08%



2015 Crop Coverage



Ditch Name: CD53

Legend	
Coverage Type	
Open Water	Sections
Alfalfa	Other Hay/Non Alfalfa
Corn	Peas
Forest	Soybeans
Developed Area	Spring Wheat
Grass/Pasture	Sweet Corn
	Ditch Watershed
	Ditches
	Cities

