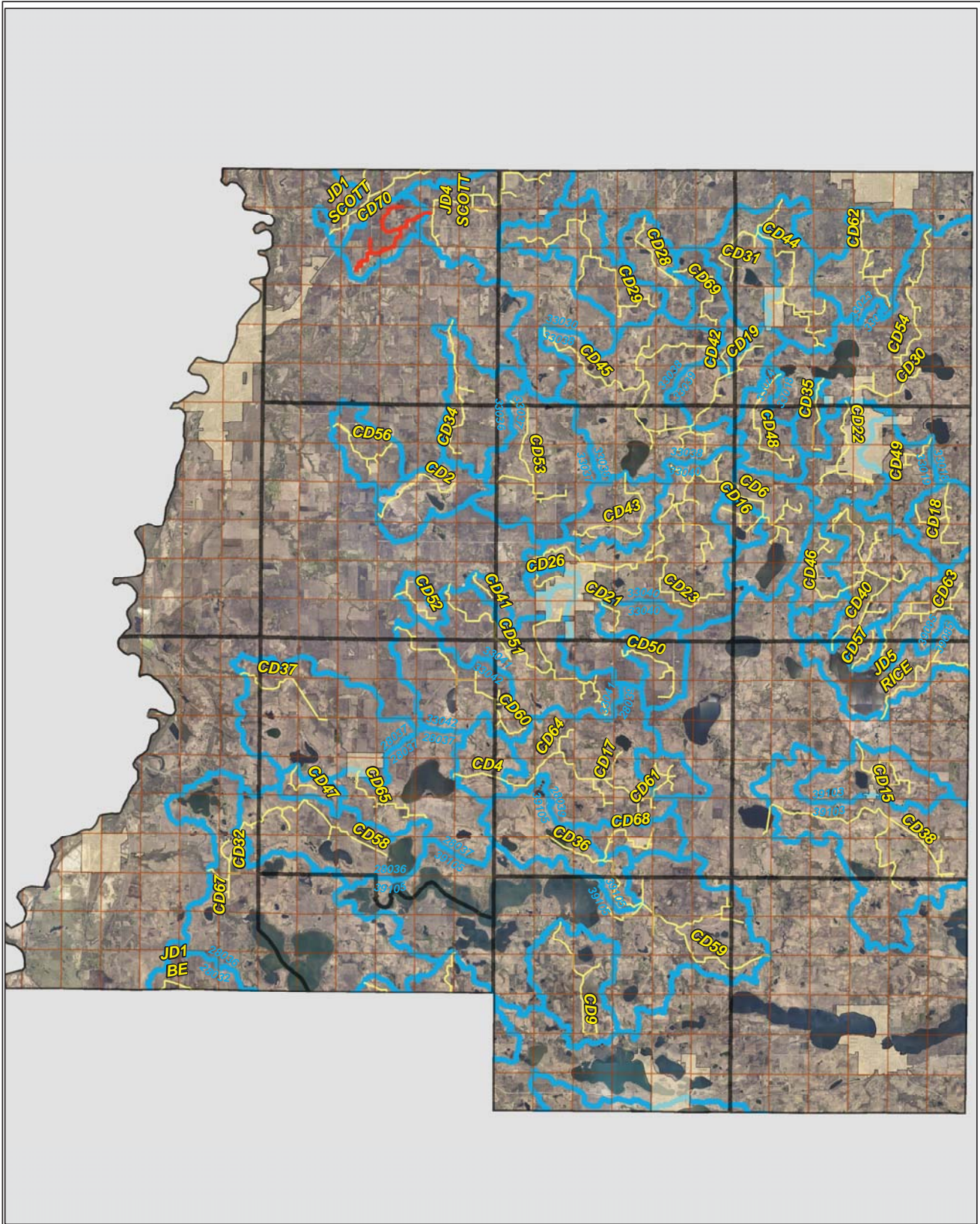
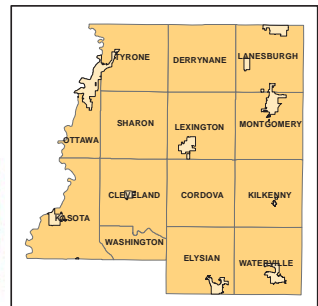
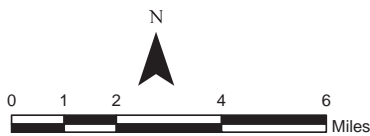


CD 70

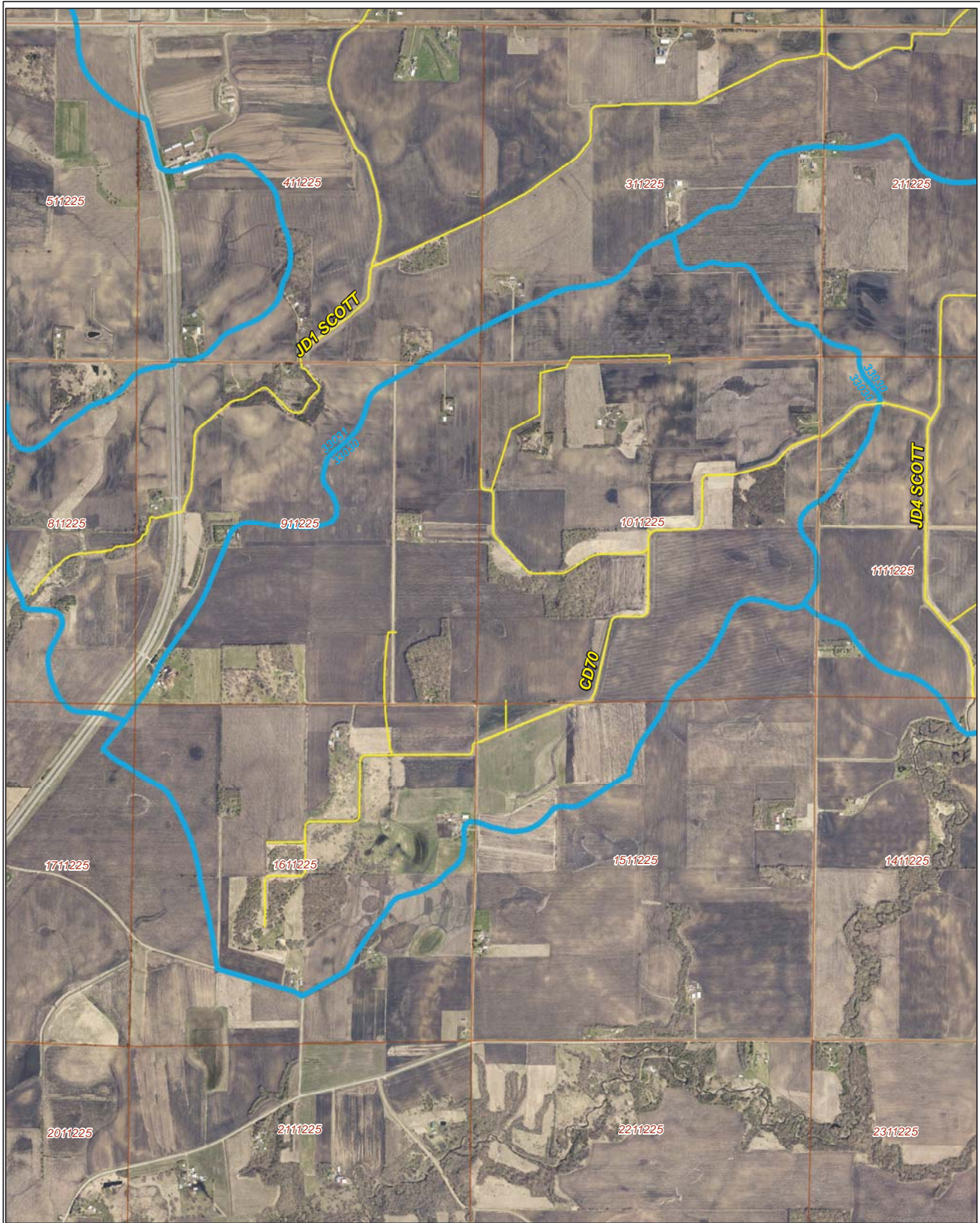


Legend

- Sections
- Cities
- Ditches**
-
-
- Ditch Watershed



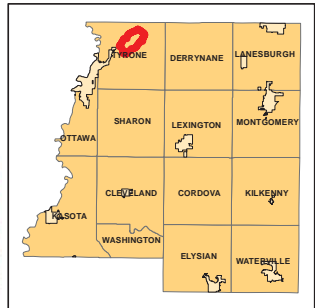
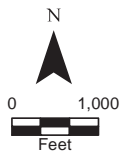
Ditch Watershed



Legend

- Sections
- Cities
- Ditches
- Ditch Watershed

Ditch ID: 33030CD70
Acres: 1640.19



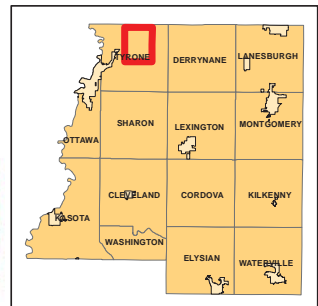
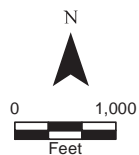
2006 Ditch Inventory



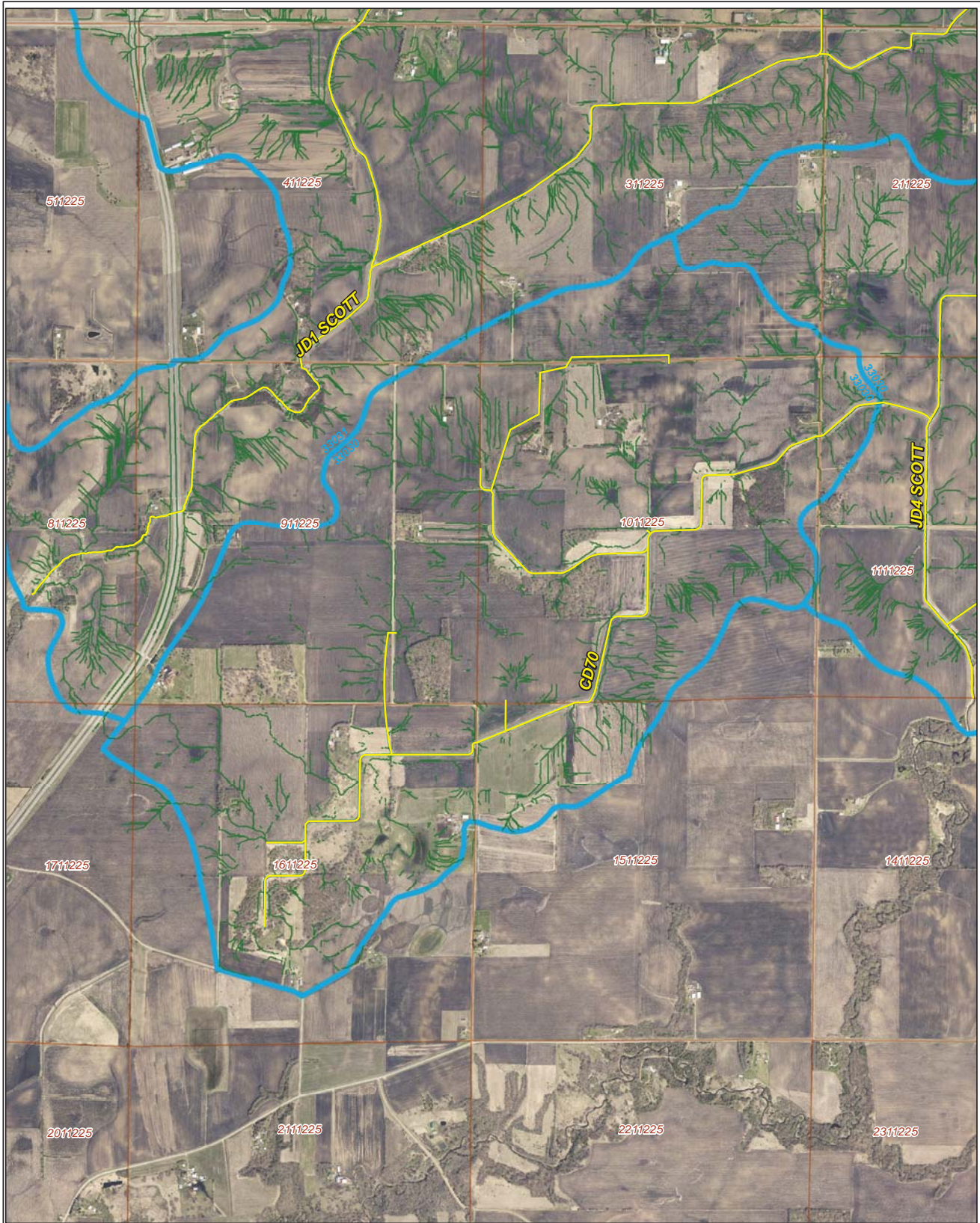
Legend

- Ditch Inventory
- Sections
- Cities
- Ditches
- Ditch Watershed






Ditch Name: CD70



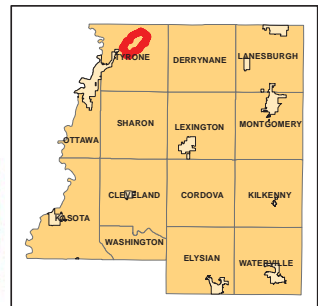
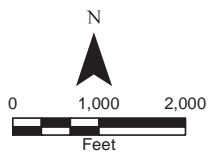
High Priority - Stream Power Index Sites



Legend

-  Sediment
-  Ditches
-  Sections
-  Cities
-  Ditch Watershed

Ditch Name: CD70

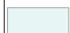







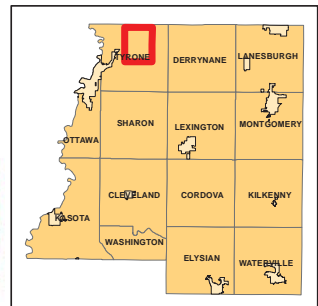
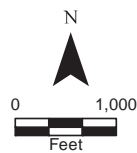
DNR Public Waters



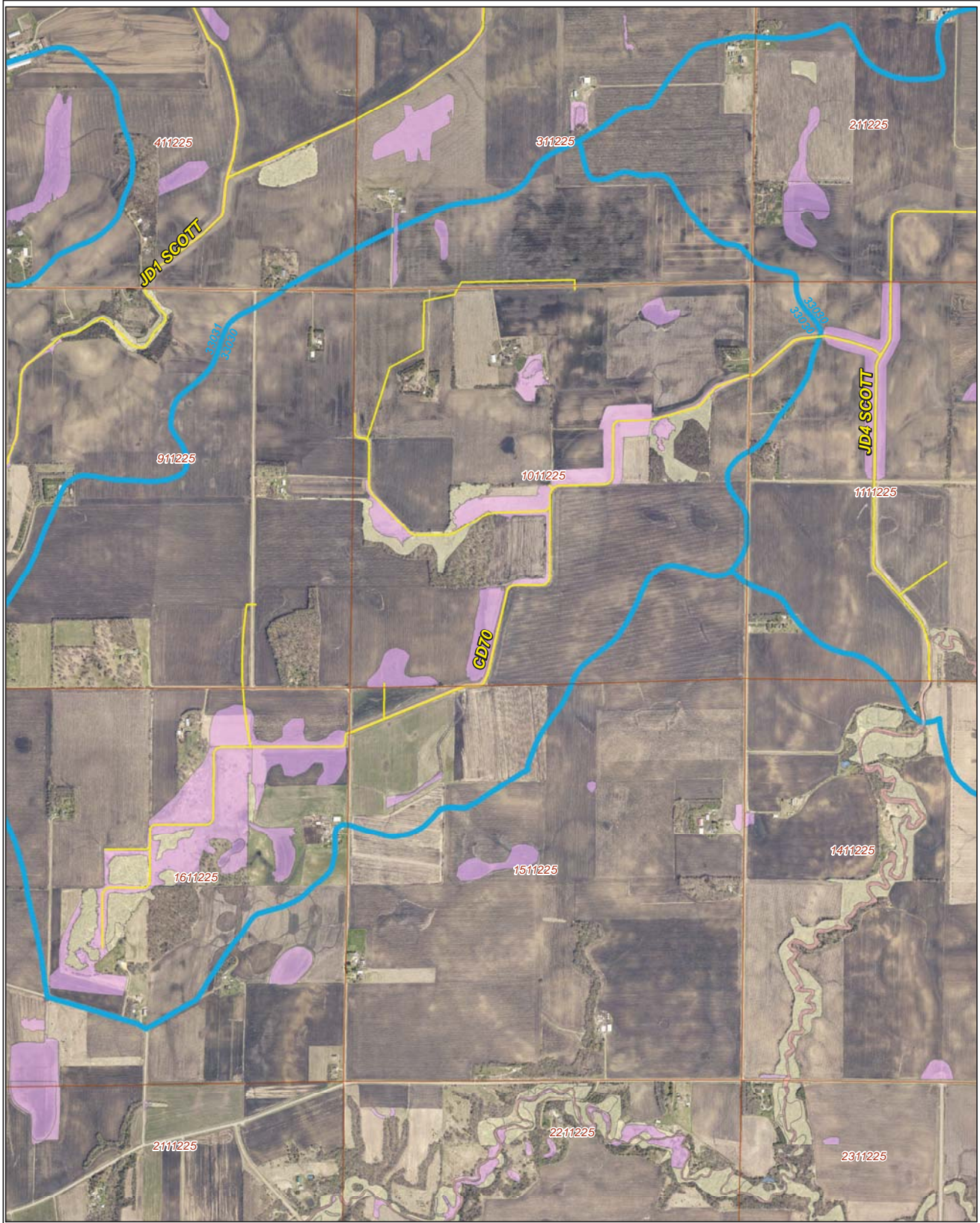
Ditch Name: CD70

Legend

-  DNR Public Lakes and Basins
-  DNR Rivers and Streams
-  Sections
-  Cities
-  Ditches
-  Ditch Watershed

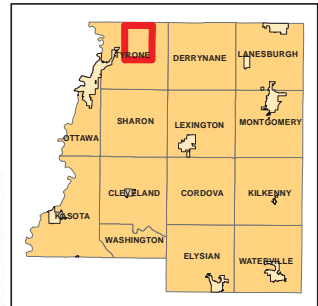
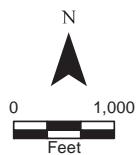


2015 Wetland Inventory

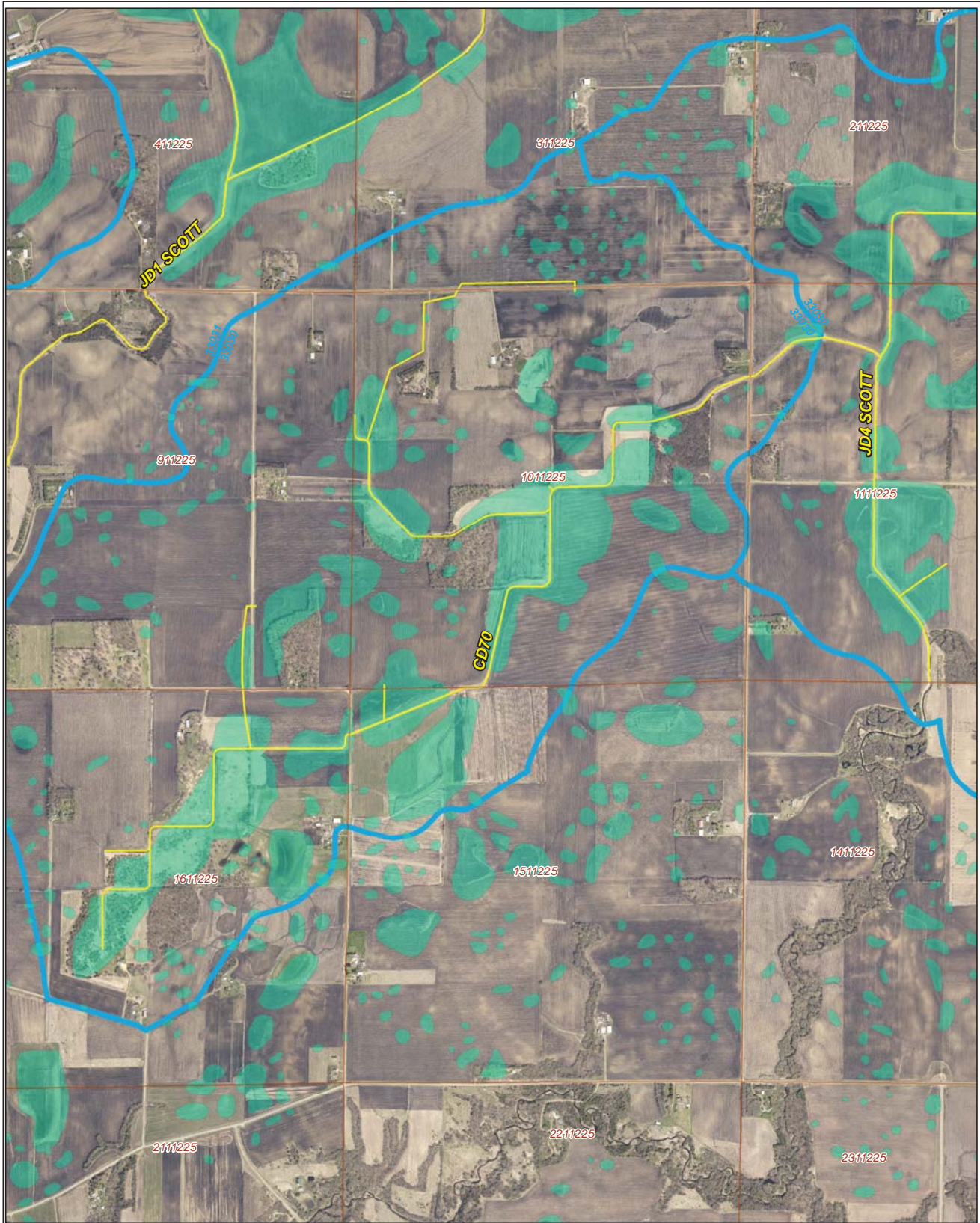


Ditch Name: CD70

Legend	
Wetland Type	
	Freshwater Emergent Wetland
	Freshwater Forested/Shrub Wetland
	Freshwater Pond
	Lake
	Riverine
	Sections
	Ditches
	Ditch Watershed



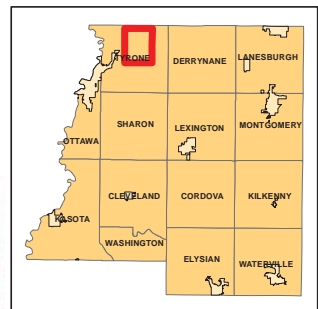
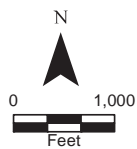
Restorable Wetlands



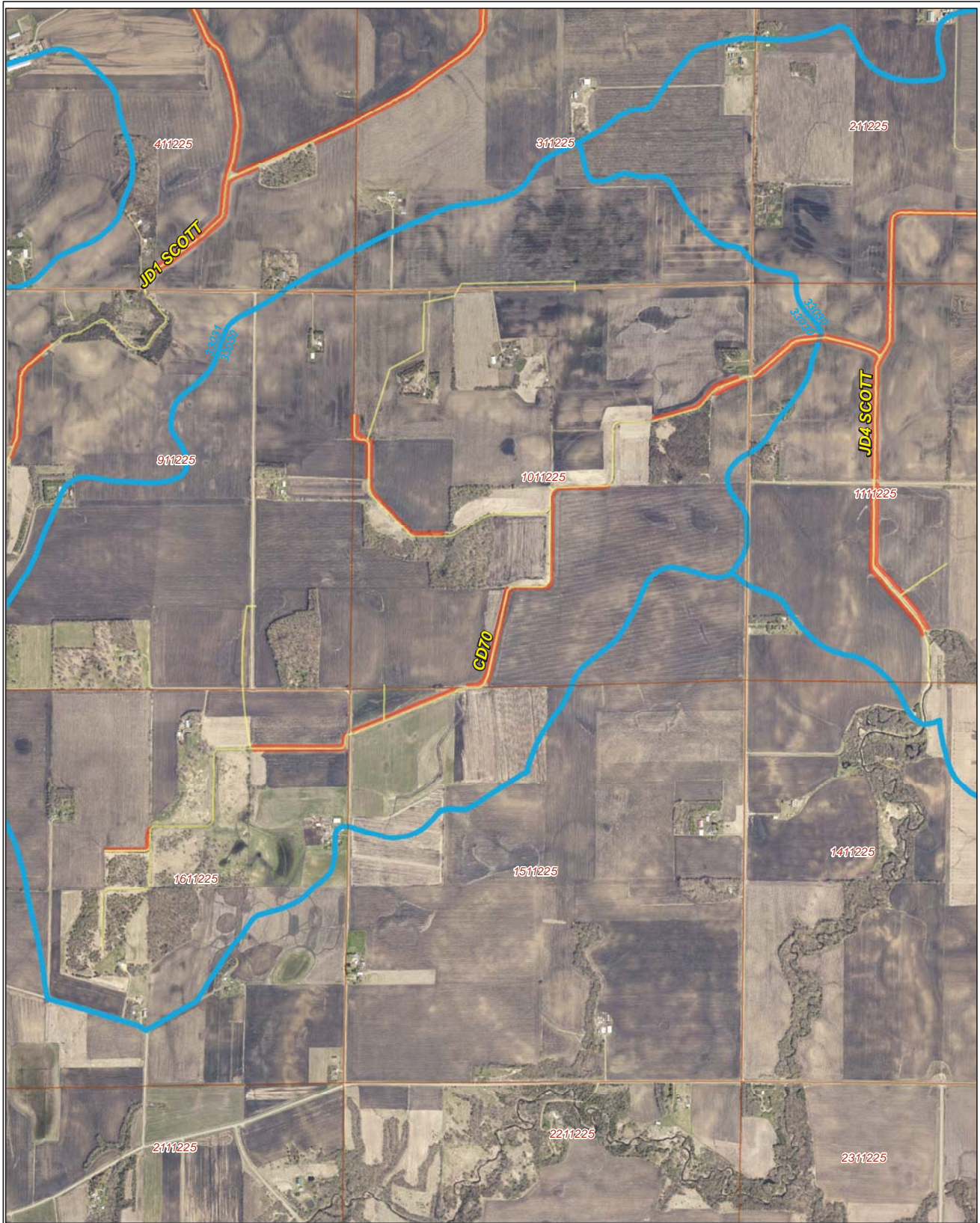
Ditch Name: CD70

Legend

- Retention Locations
- Sections
- Cities
- Ditches
- Ditch Watershed



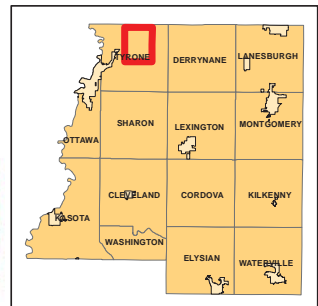
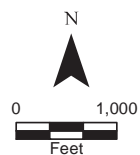
Ditch Buffer



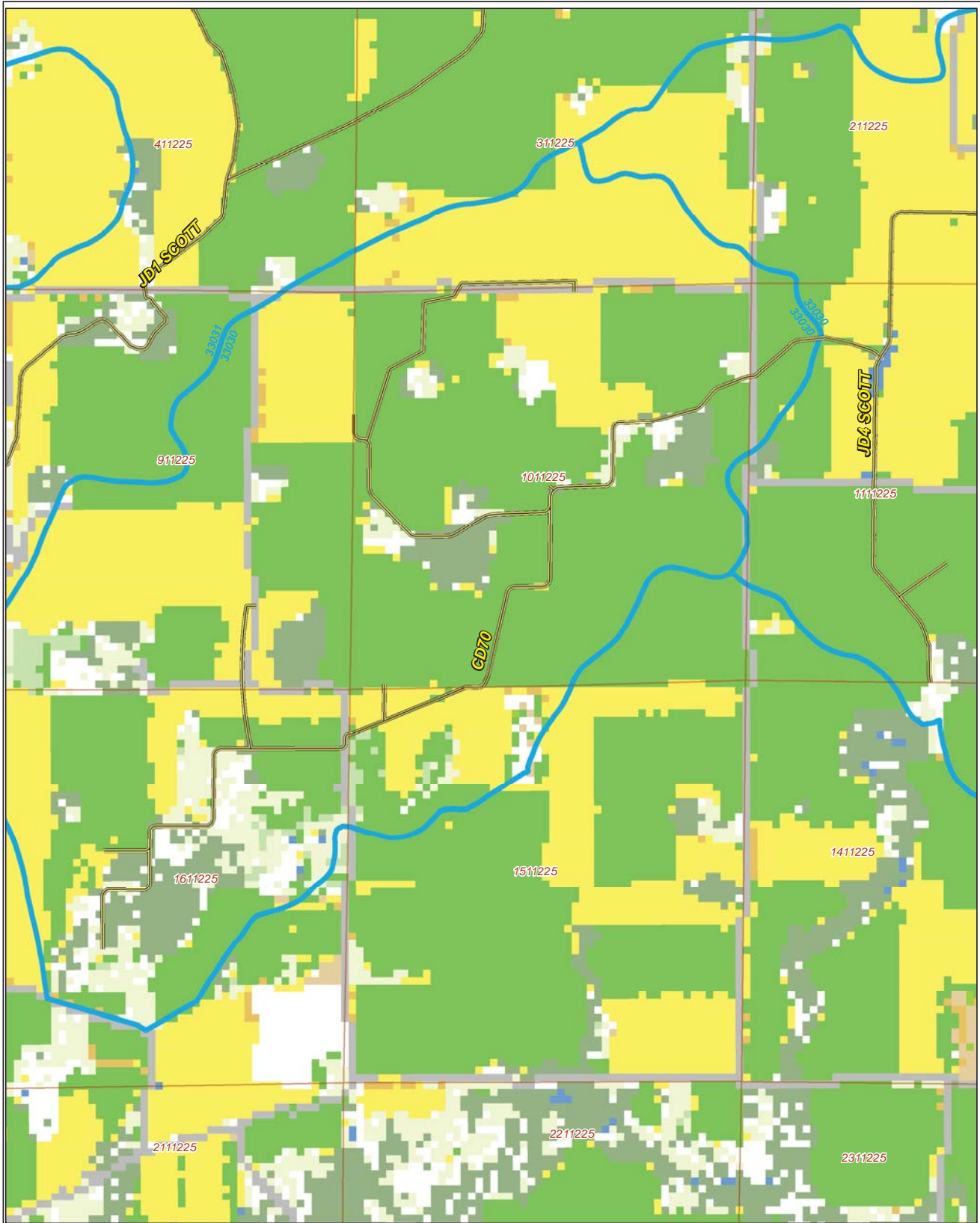
Legend

-  Ditches
-  Needs Buffer
-  Sections
-  Cities
-  Ditch Watershed

Ditch Name: CD70
Percent Buffered: 68.94%



2015 Crop Coverage



Ditch Name: CD70

Legend		
Coverage Type		
Alfalfa	Open Water	Sections
Corn	Other Hay/Non Alfalfa	Cities
Forest	Peas	Ditches
Developed Area	Soybeans	Ditch Watershed
Grass/Pasture	Spring Wheat	
	Sweet Corn	

