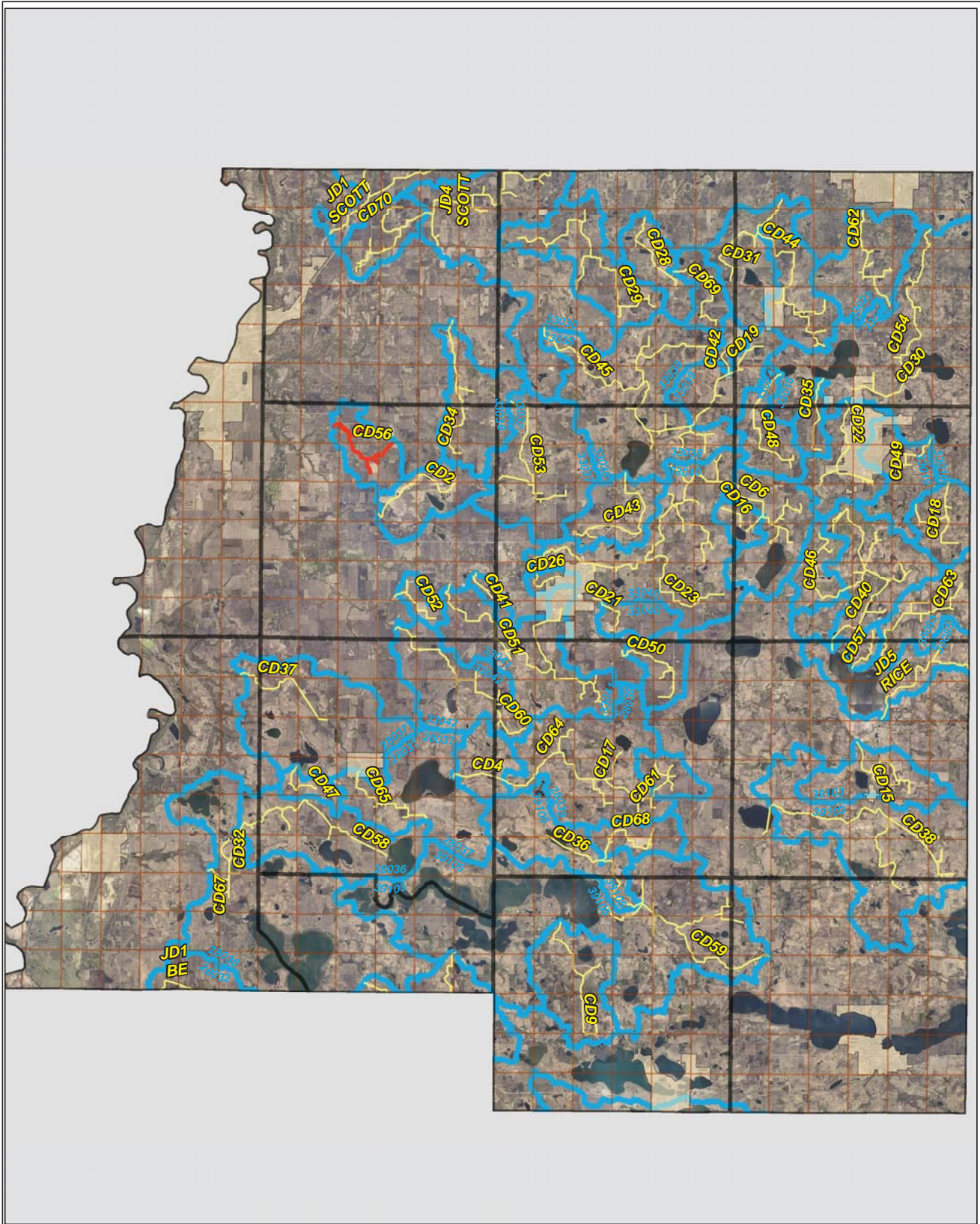


# CD 56

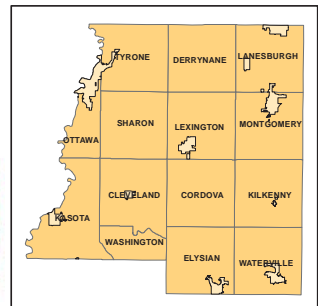


**Legend**

- Sections
- Cities
- Ditches**
- 
- 
- Ditch Watershed

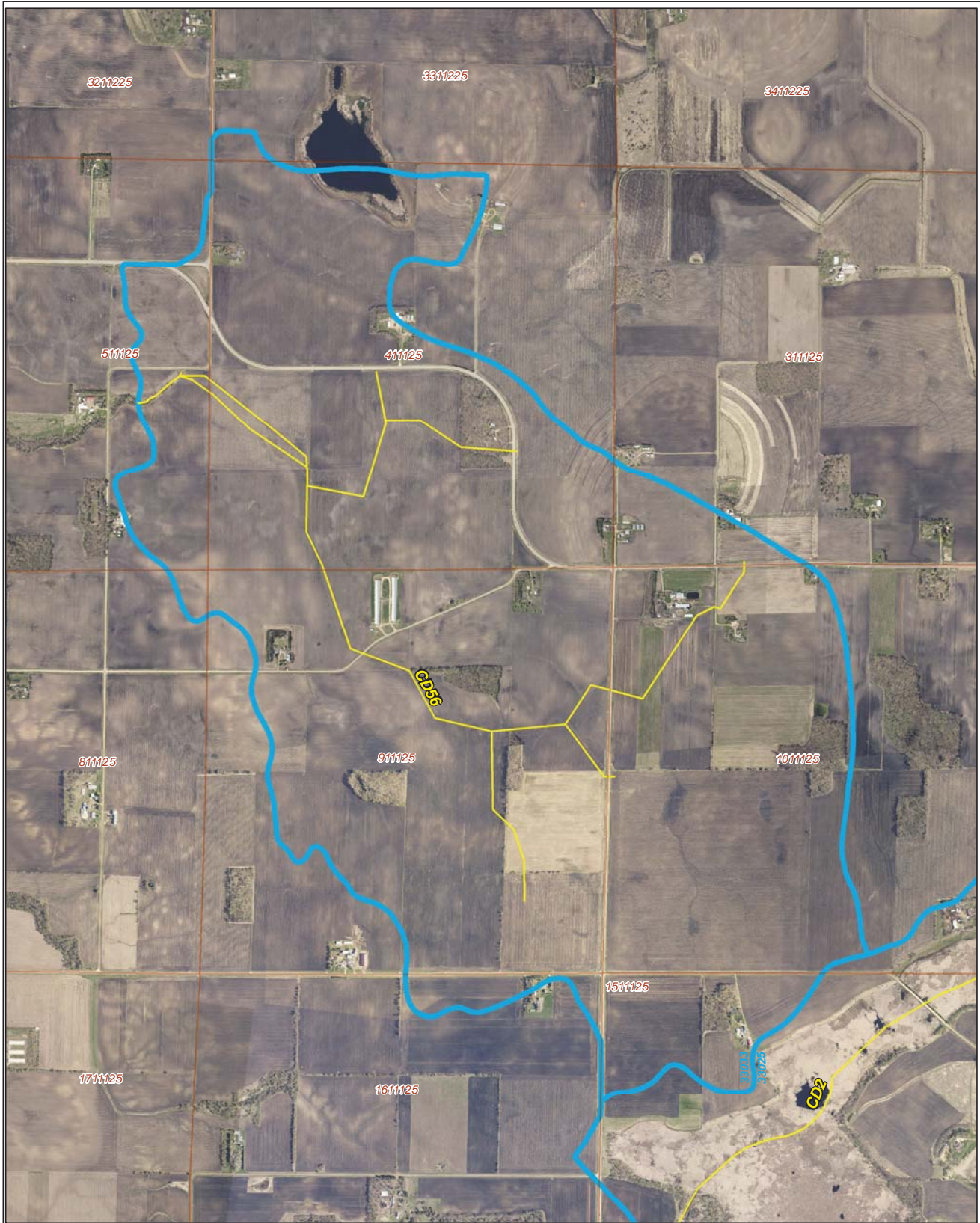


N





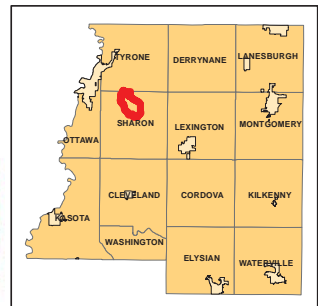
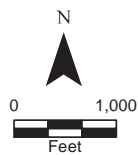
# Ditch Watershed



**Legend**

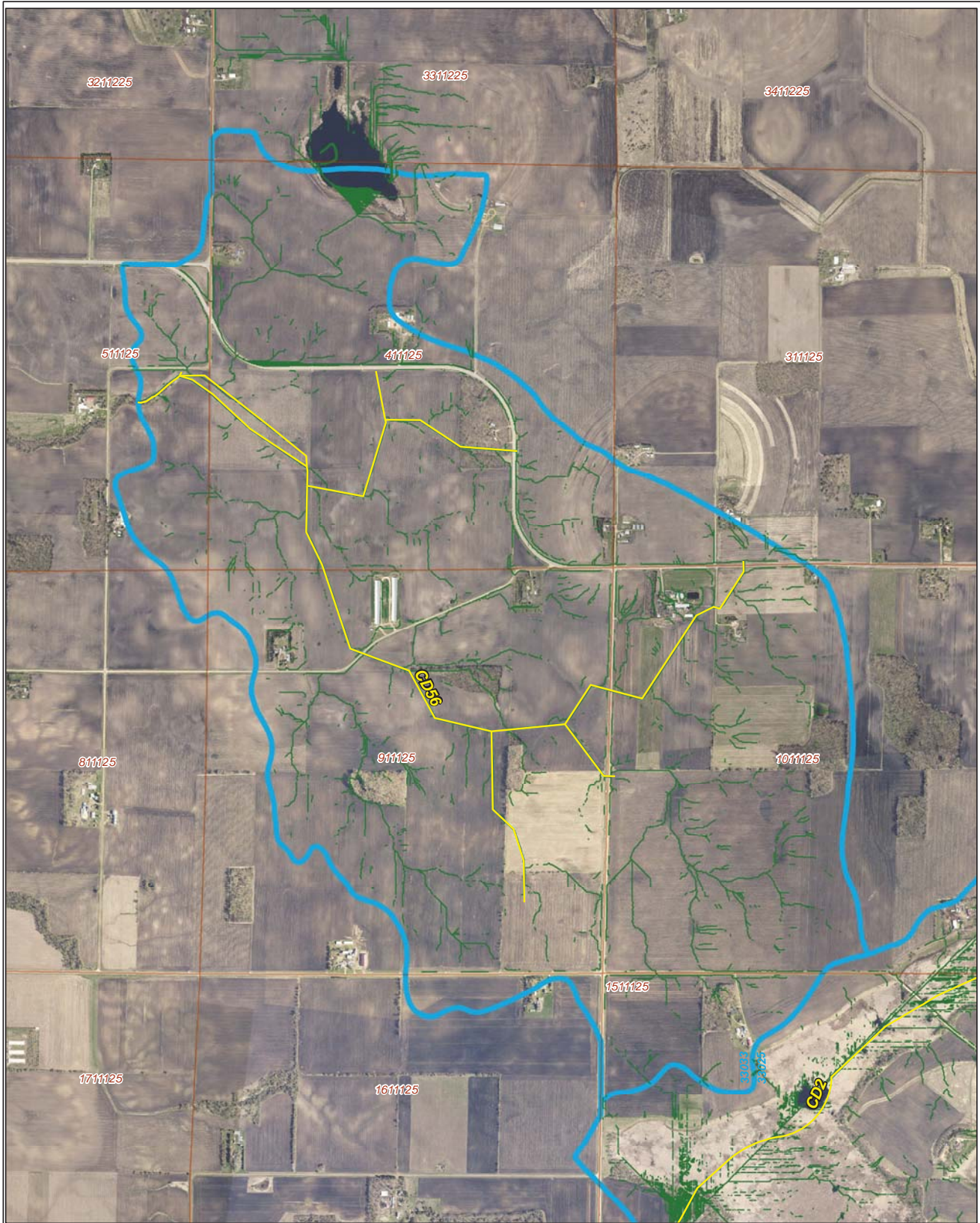
- Sections
- Cities
- Ditches
- Ditch Watershed

Ditch ID: 33033CD56  
Acres: 1604.59










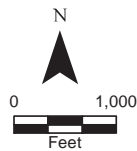
# High Priority - Stream Power Index Sites



## Legend

-  Sediment
-  Ditches
-  Sections
-  Cities
-  Ditch Watershed

Ditch Name: CD56





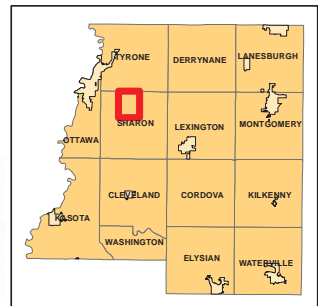
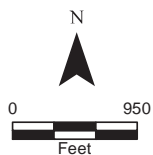
# 2006 Ditch Inventory



## Legend

- Ditch Inventory
- Sections
- Cities
- Ditches
- Ditch Watershed

Ditch Name: CD56



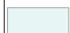







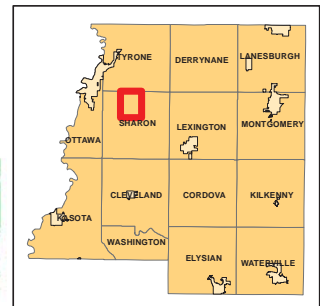
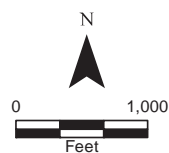
# DNR Public Waters



Ditch Name: CD56

## Legend

-  DNR Public Lakes and Basins
-  DNR Rivers and Streams
-  Sections
-  Cities
-  Ditches
-  Ditch Watershed



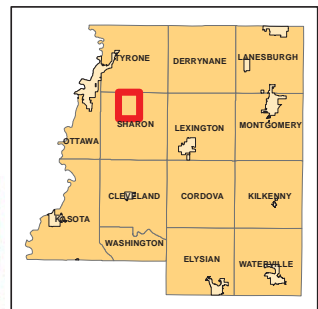
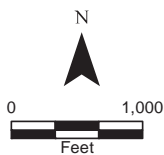


# 2015 Wetland Inventory



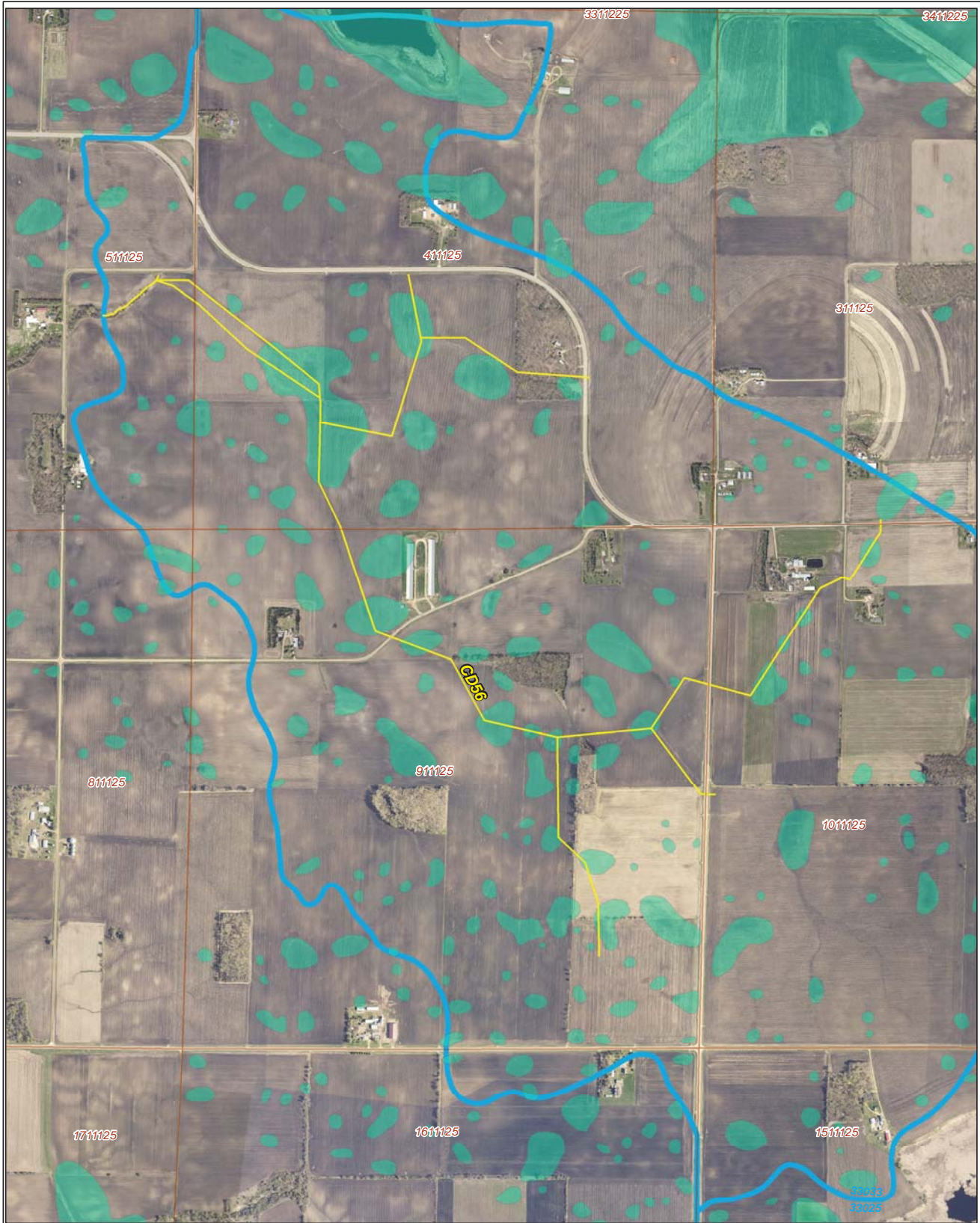
Ditch Name: CD56

Legend	
Wetland Type	
	Freshwater Emergent Wetland
	Freshwater Forested/Shrub Wetland
	Freshwater Pond
	Lake
	Riverine
	Sections
	Ditches
	Ditch Watershed





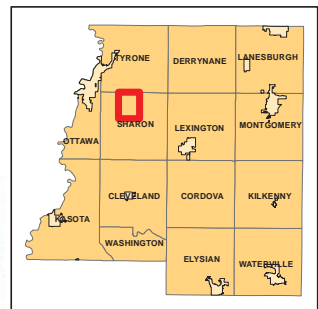
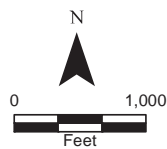
# Restorable Wetlands



Ditch Name: CD56

## Legend

- Retention Locations
- Sections
- Cities
- Ditches
- Ditch Watershed





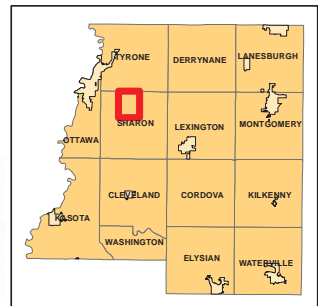
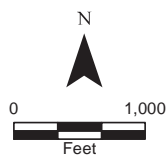
# Ditch Buffer



## Legend

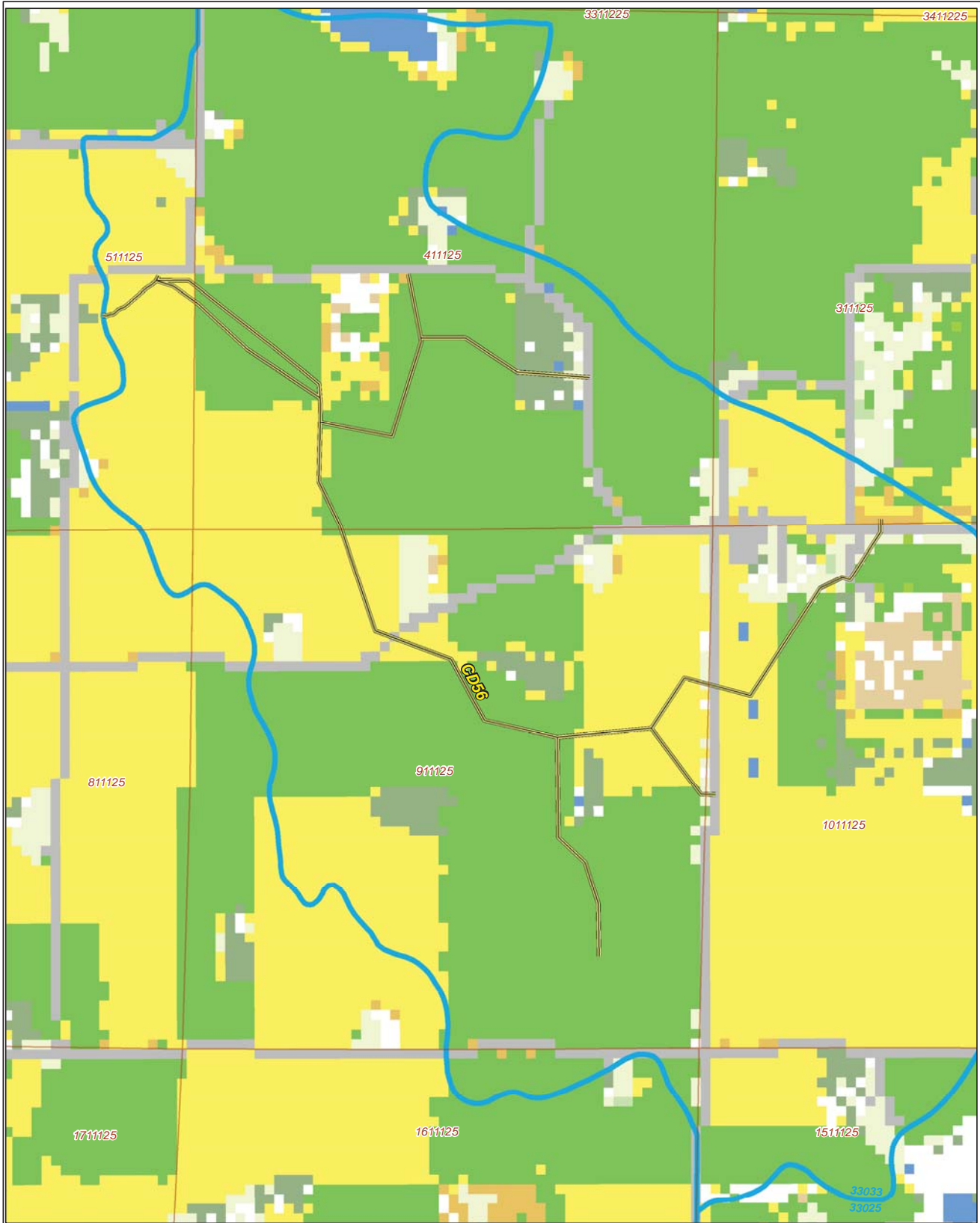
-  Ditches
-  Needs Buffer
-  Sections
-  Cities
-  Ditch Watershed

Ditch Name: CD56  
Percent Buffered: 96.79%





# 2015 Crop Coverage



Ditch Name: CD56

Legend		
Coverage Type		
Alfalfa	Open Water	Sections
Corn	Other Hay/Non Alfalfa	Cities
Forest	Peas	Ditches
Developed Area	Soybeans	Ditch Watershed
Grass/Pasture	Spring Wheat	
	Sweet Corn	

