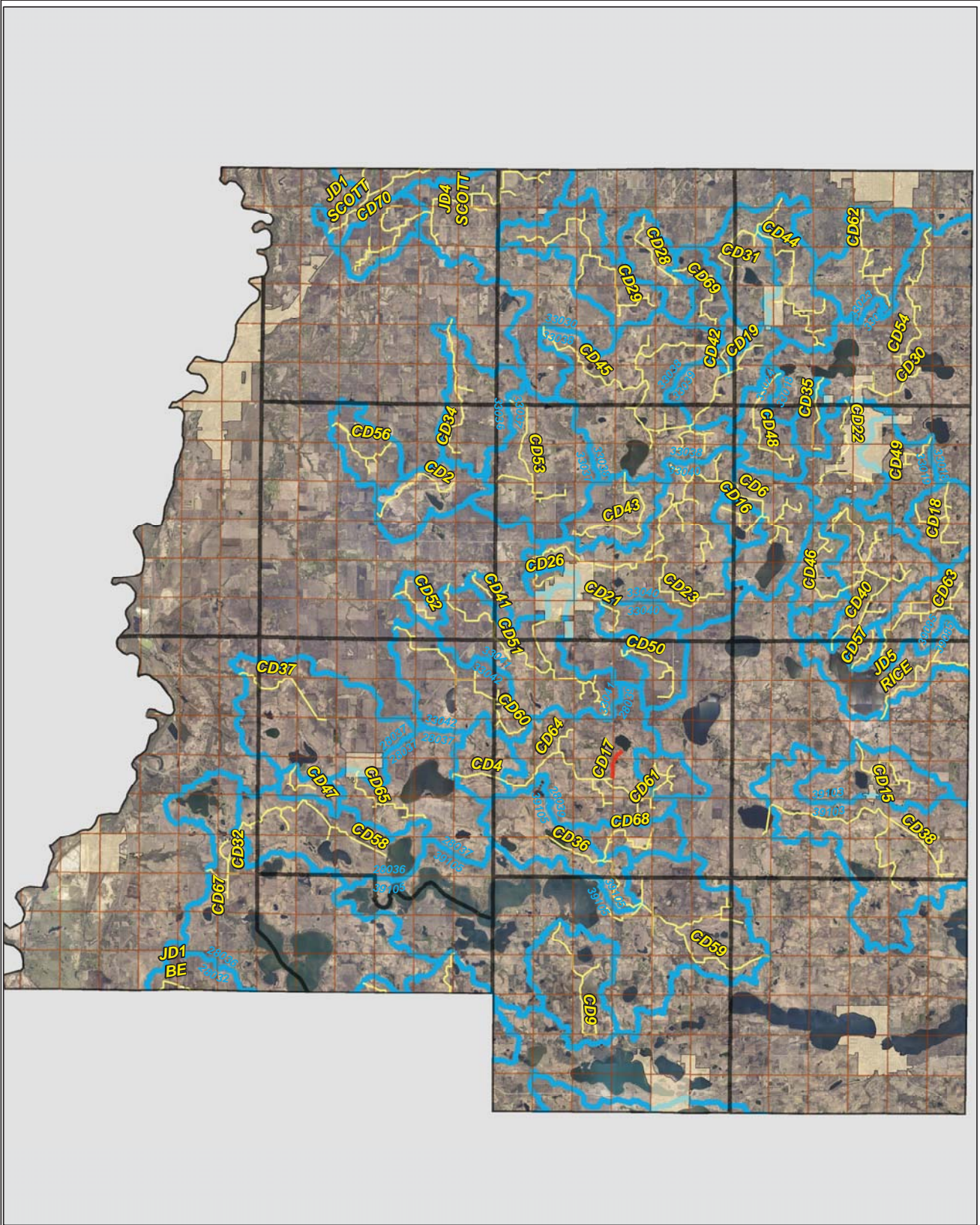




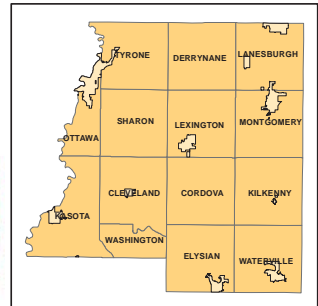
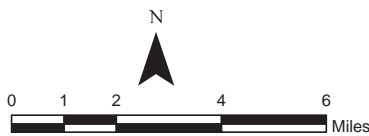


CD 17

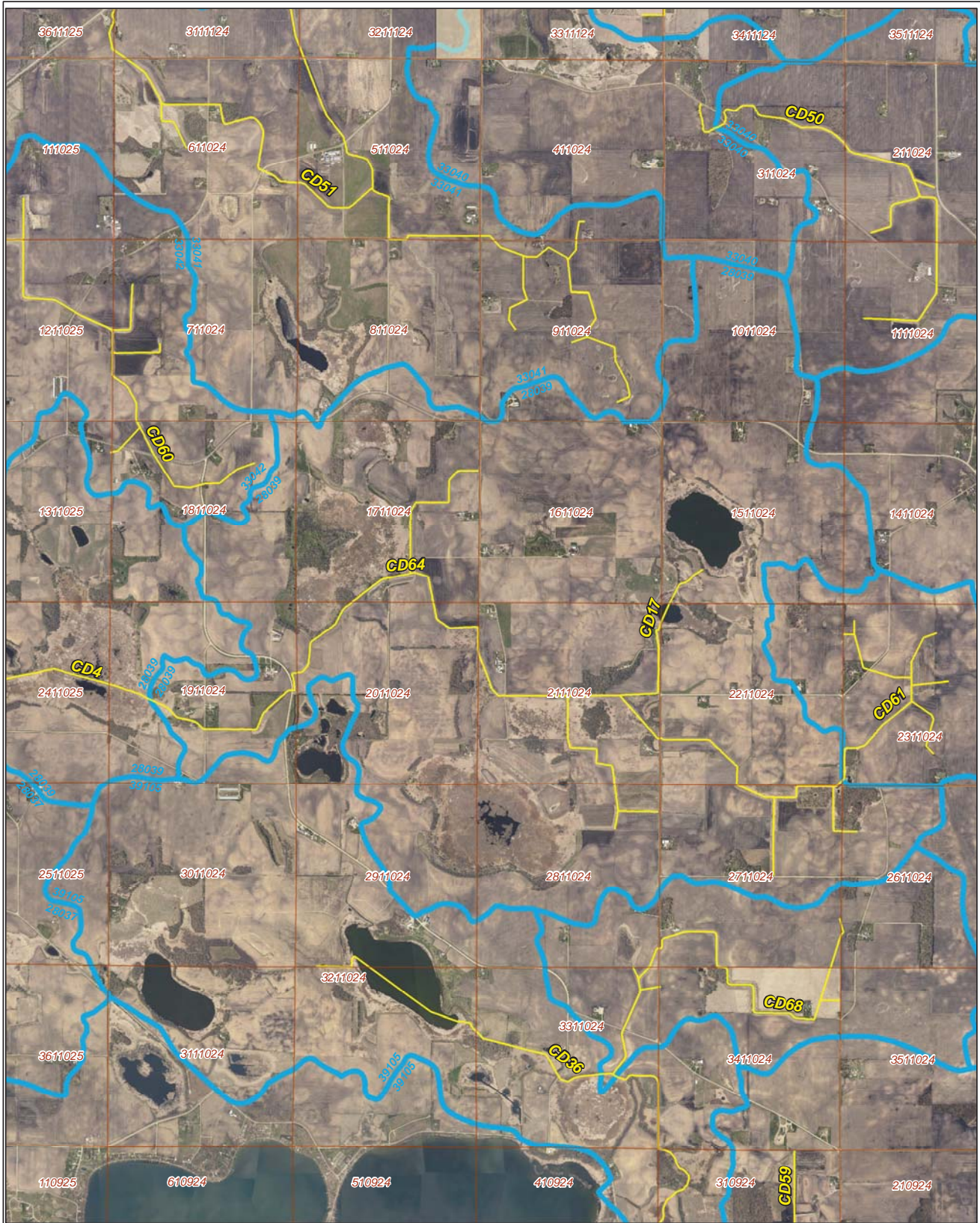


Legend

-  Sections
-  Cities
- Ditches**
-  Ditch Watershed
-  Ditch Watershed



Ditch Watershed



Legend

- Sections
- Cities
- Ditches
- Ditch Watershed

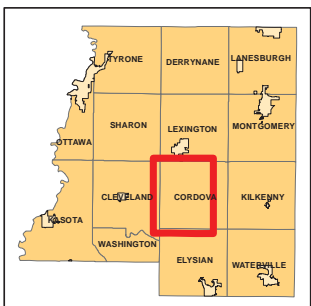
Ditch ID: 28039CD17
Acres: 5871.23



N



0 1,000 2,000
Feet



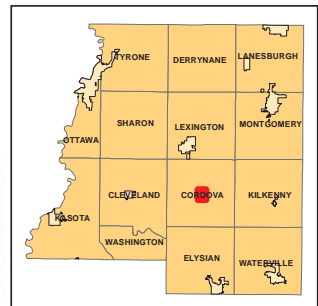
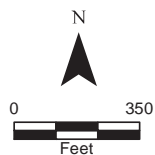
2006 Ditch Inventory



Legend

- Ditch Inventory
- Sections
- Cities
- Ditches
- Ditch Watershed

Ditch Name: CD17

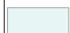







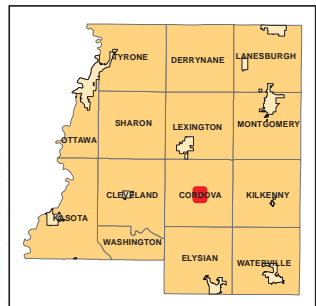
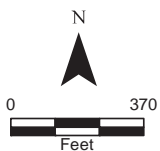
DNR Public Waters



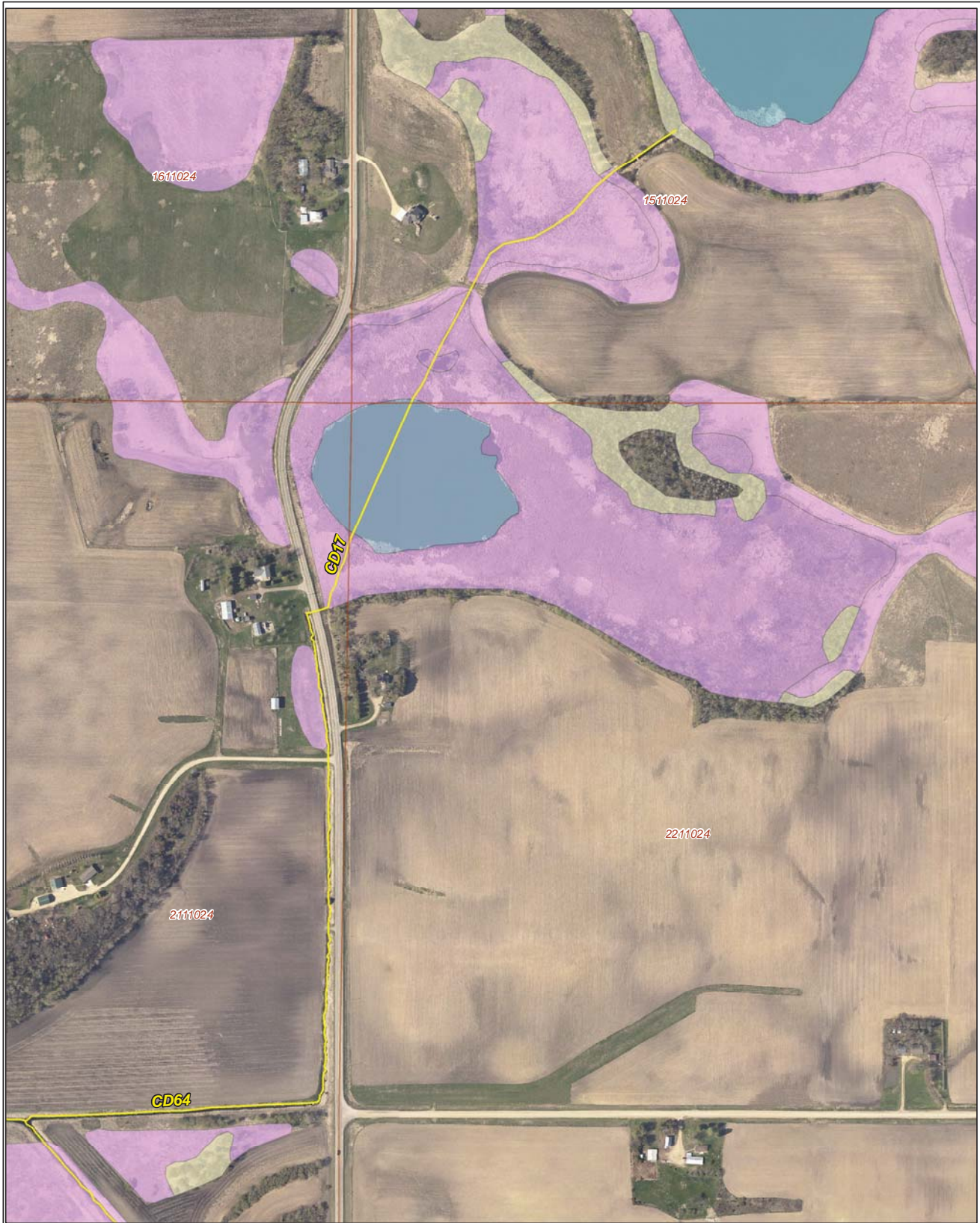
Ditch Name: CD17

Legend

-  DNR Public Lakes and Basins
-  DNR Rivers and Streams
-  Sections
-  Cities
-  Ditches
-  Ditch Watershed

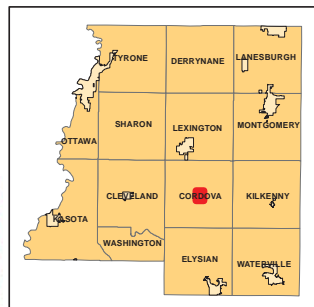
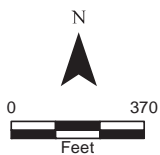


2015 Wetland Inventory

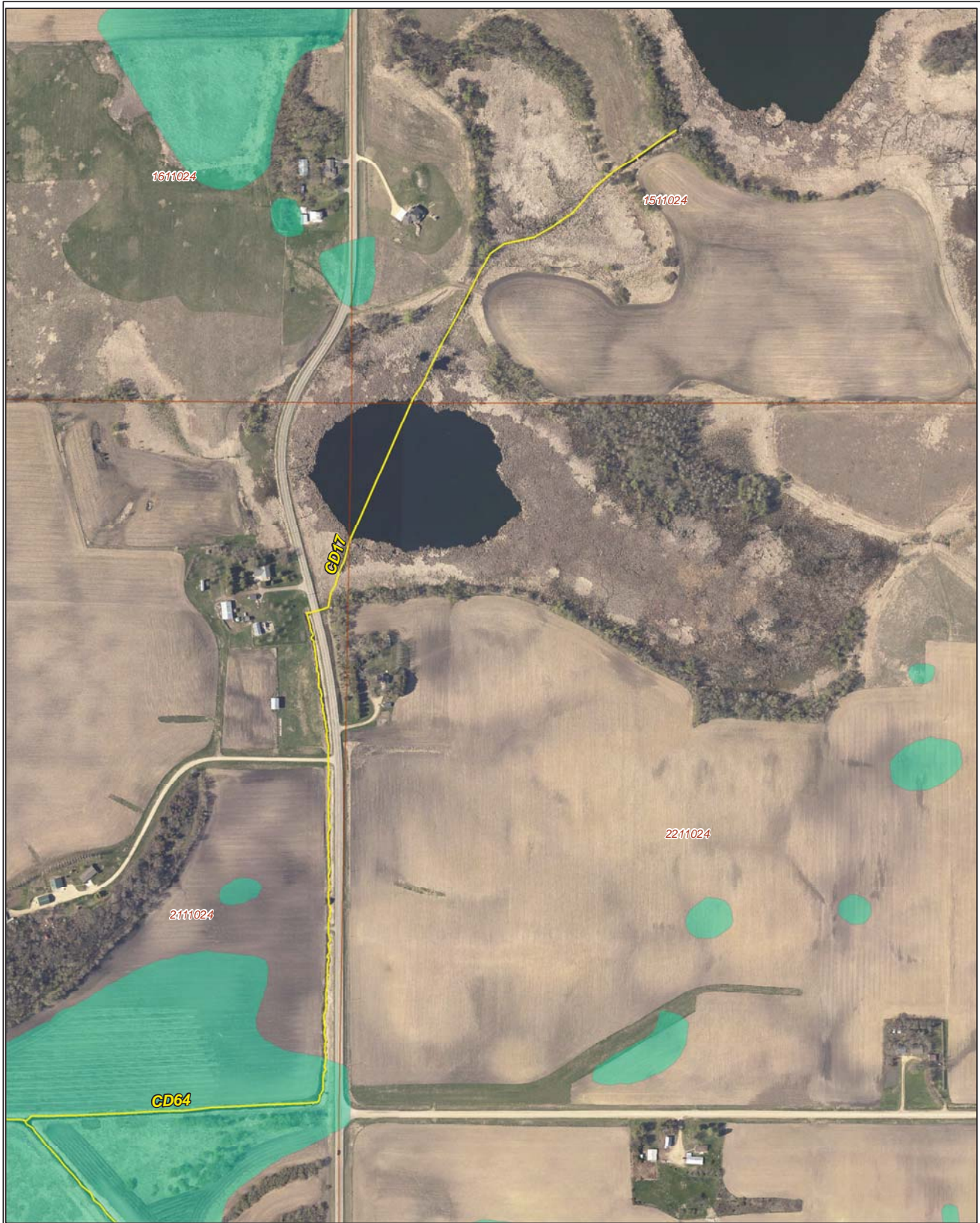


Ditch Name: CD17

Legend	
	Freshwater Emergent Wetland
	Freshwater Forested/Shrub Wetland
	Freshwater Pond
	Lake
	Riverine
	Sections
	Ditches
	Ditch Watershed



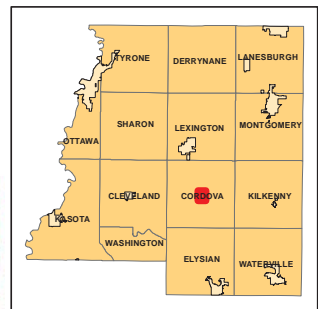
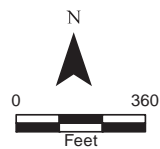
Restorable Wetlands



Ditch Name: CD17

Legend

- Retention Locations
- Sections
- Cities
- Ditches
- Ditch Watershed



Ditch Buffer



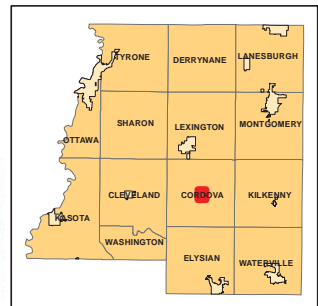
Legend

-  Ditches
-  Needs Buffer
-  Sections
-  Cities
-  Ditch Watershed

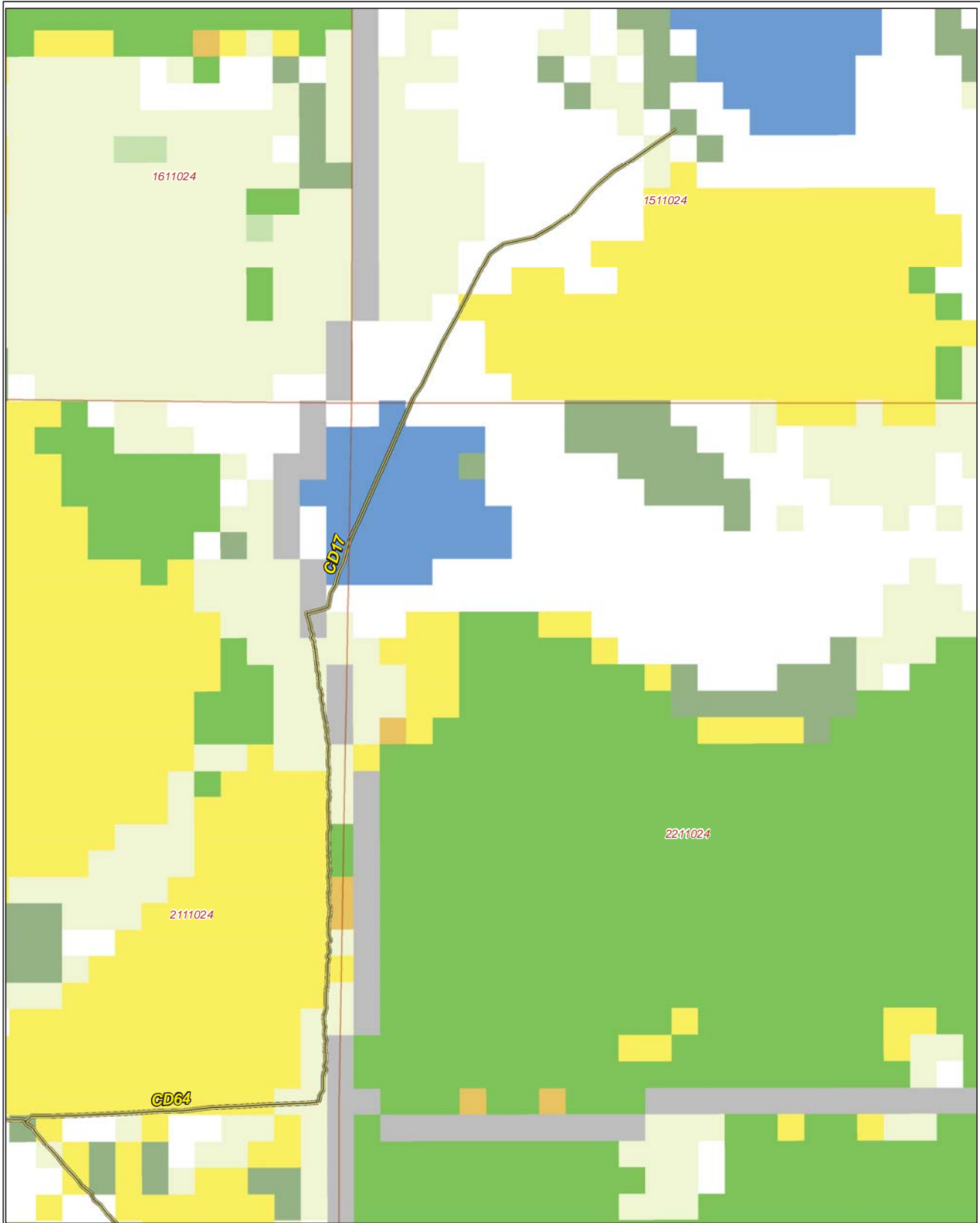
Ditch Name: CD17
Percent Buffered: 83.87%



N



2015 Crop Coverage



Ditch Name: CD17

Legend		
Coverage Type		
Alfalfa	Open Water	Sections
Corn	Other Hay/Non Alfalfa	Cities
Forest	Peas	Ditches
Developed Area	Soybeans	Ditch Watershed
Grass/Pasture	Spring Wheat	
	Sweet Corn	

