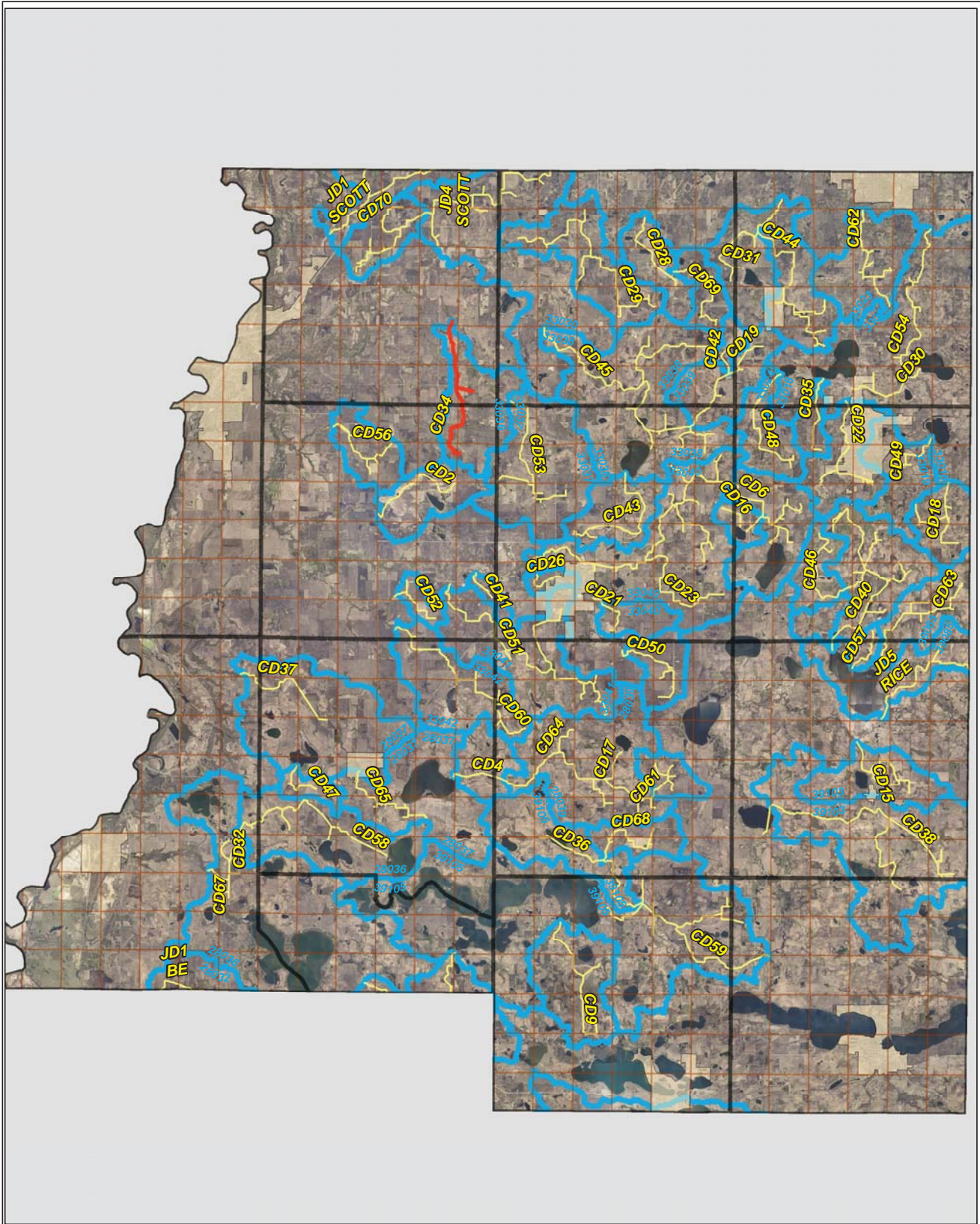


CD 34

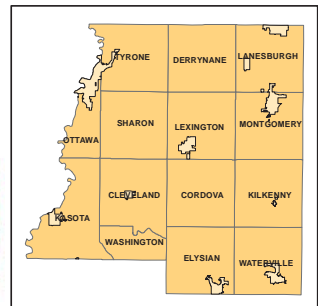


Legend

- Sections
- Cities
- Ditches**
-
-
- Ditch Watershed







N



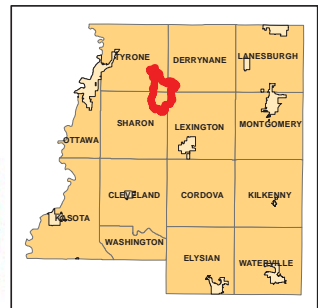
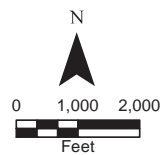
Ditch Watershed



Legend

-  Sections
-  Cities
-  Ditches
-  Ditch Watershed

Ditch ID: 33036CD34
Acres: 3007.97



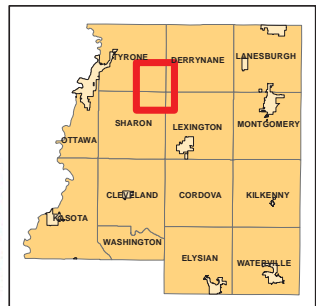
2006 Ditch Inventory



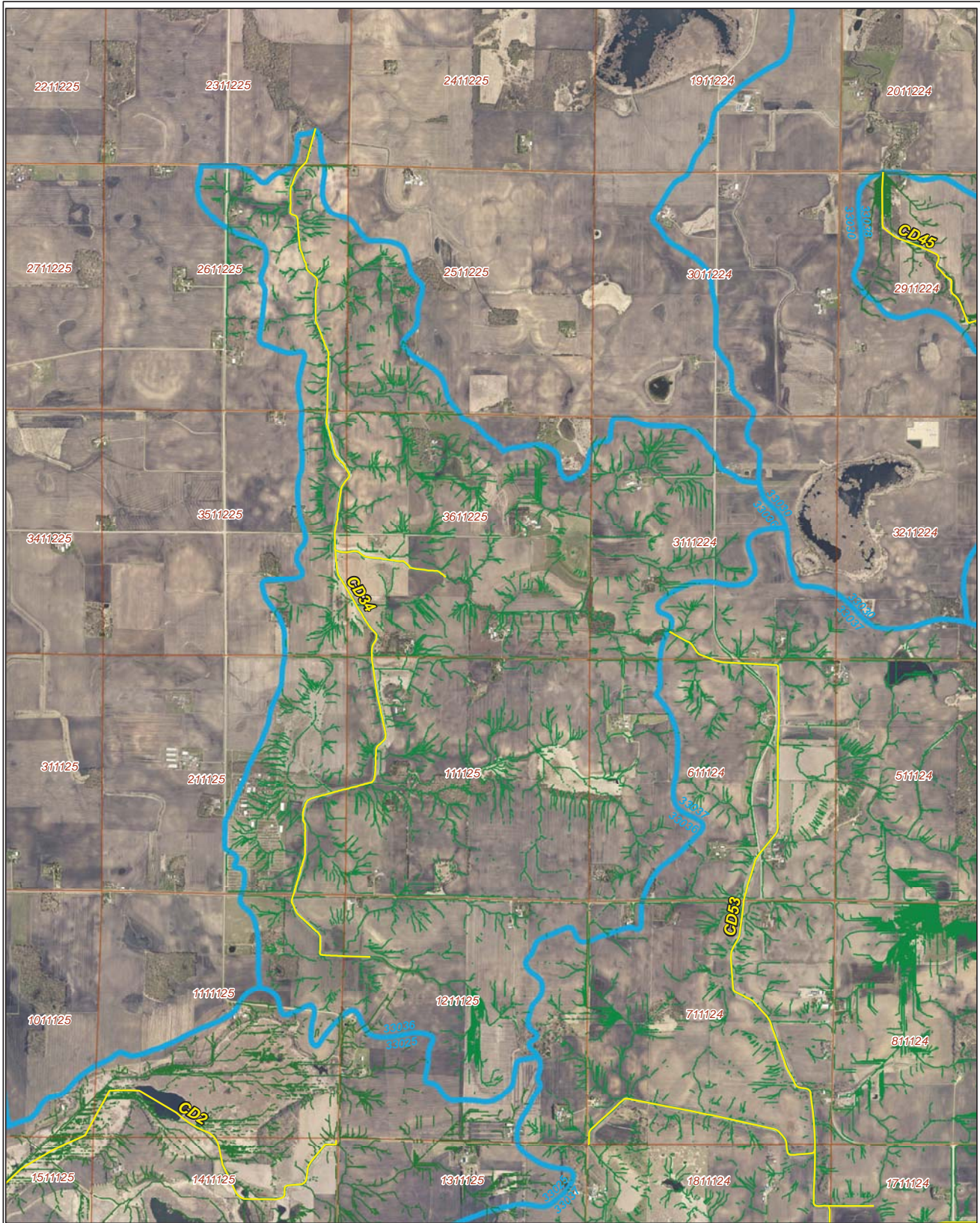
Legend

- Ditch Inventory
- Sections
- Cities
- Ditches
- Ditch Watershed






Ditch Name: CD34



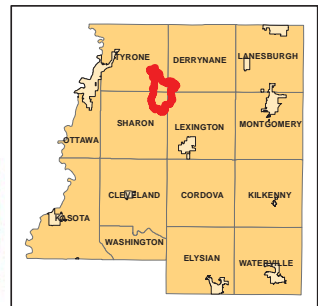
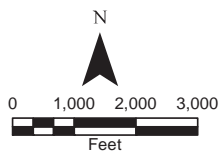
High Priority - Stream Power Index Sites



Legend

-  Sediment
-  Ditches
-  Sections
-  Cities
-  Ditch Watershed

Ditch Name: CD34

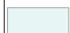







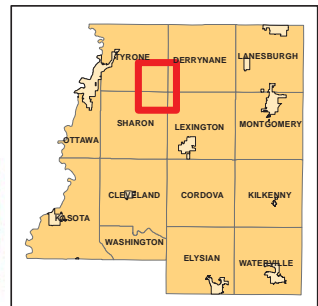
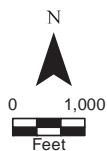
DNR Public Waters



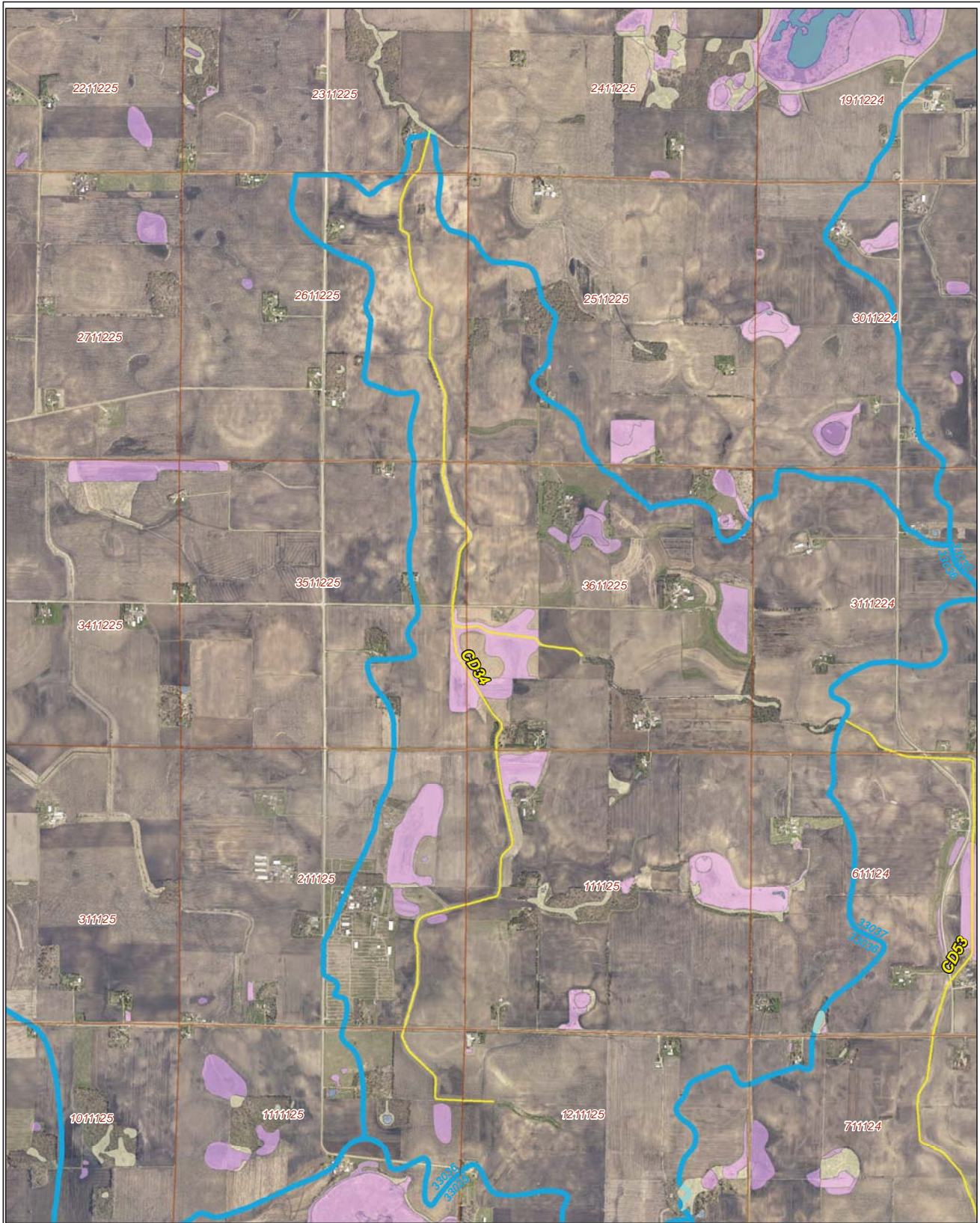
Ditch Name: CD34

Legend

-  DNR Public Lakes and Basins
-  DNR Rivers and Streams
-  Sections
-  Cities
-  Ditches
-  Ditch Watershed

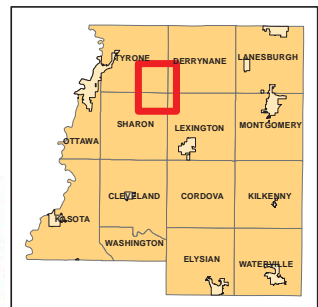
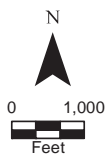


2015 Wetland Inventory

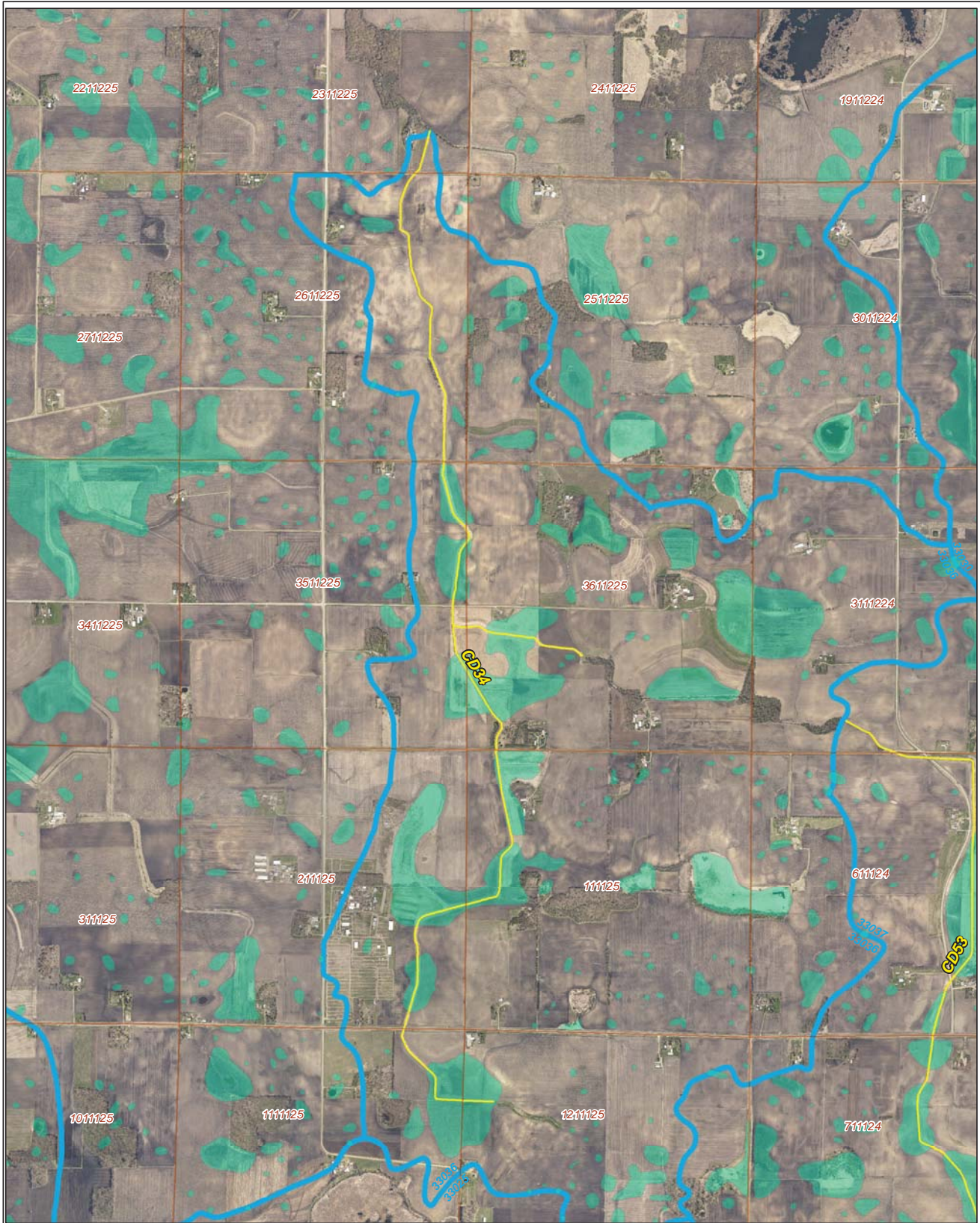


Ditch Name: CD34

Legend	
Wetland Type	Sections
Freshwater Emergent Wetland	Sections
Freshwater Forested/Shrub Wetland	Ditches
Freshwater Pond	Ditch Watershed
Lake	
Riverine	



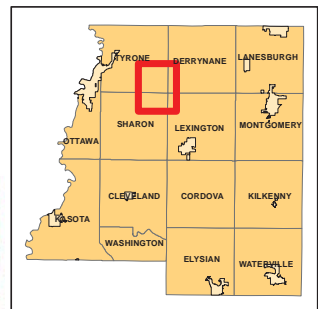
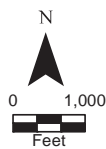
Restorable Wetlands



Ditch Name: CD34

Legend

- Retention Locations
- Sections
- Cities
- Ditches
- Ditch Watershed



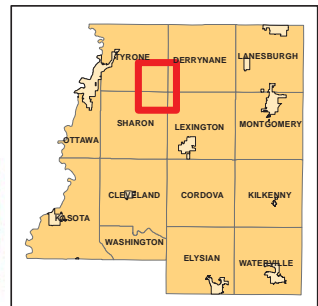
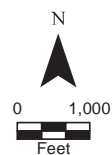
Ditch Buffer



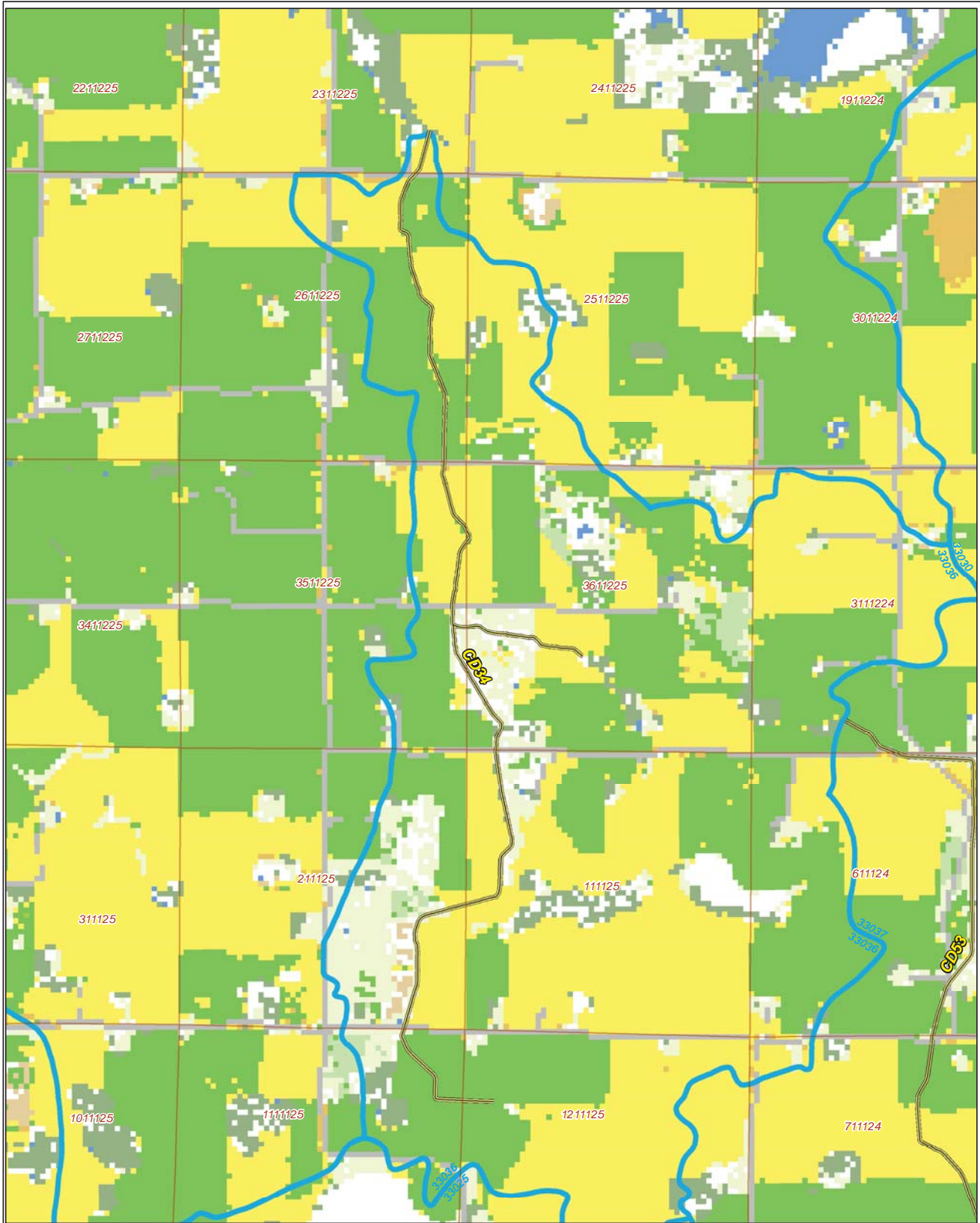
Legend

-  Ditches
-  Needs Buffer
-  Sections
-  Cities
-  Ditch Watershed

Ditch Name: CD34
Percent Buffered: 55.19%



2015 Crop Coverage



Ditch Name: CD34

Legend	
Coverage Type	
Alfalfa	Open Water
Corn	Other Hay/Non Alfalfa
Forest	Peas
Developed Area	Soybeans
Grass/Pasture	Spring Wheat
	Sweet Corn
	Sections
	Cities
	Ditches
	Ditch Watershed

