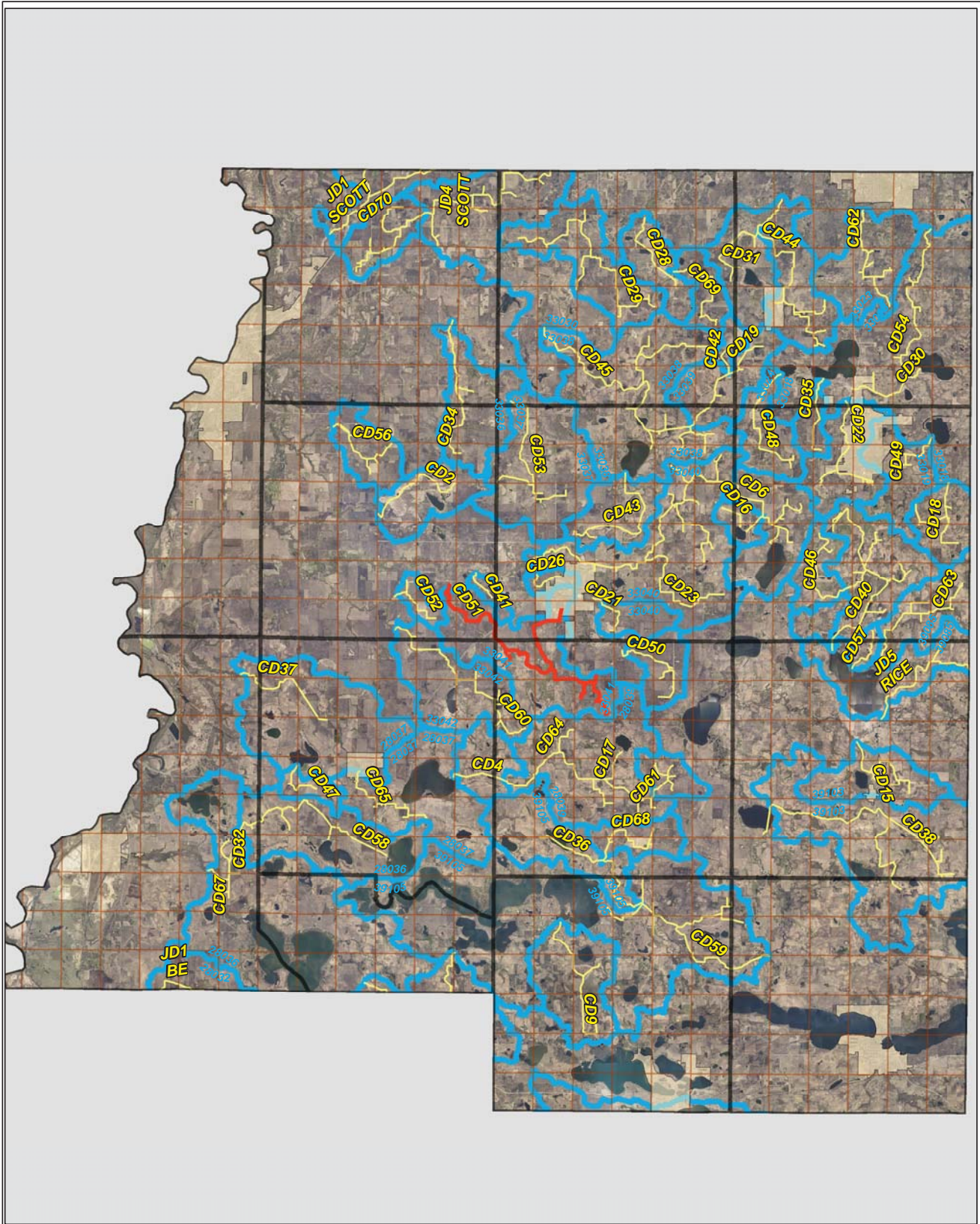


CD 51

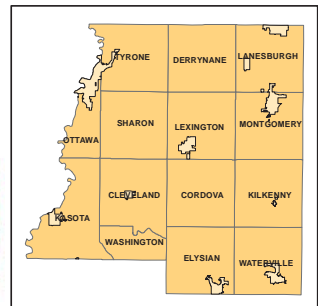


Legend

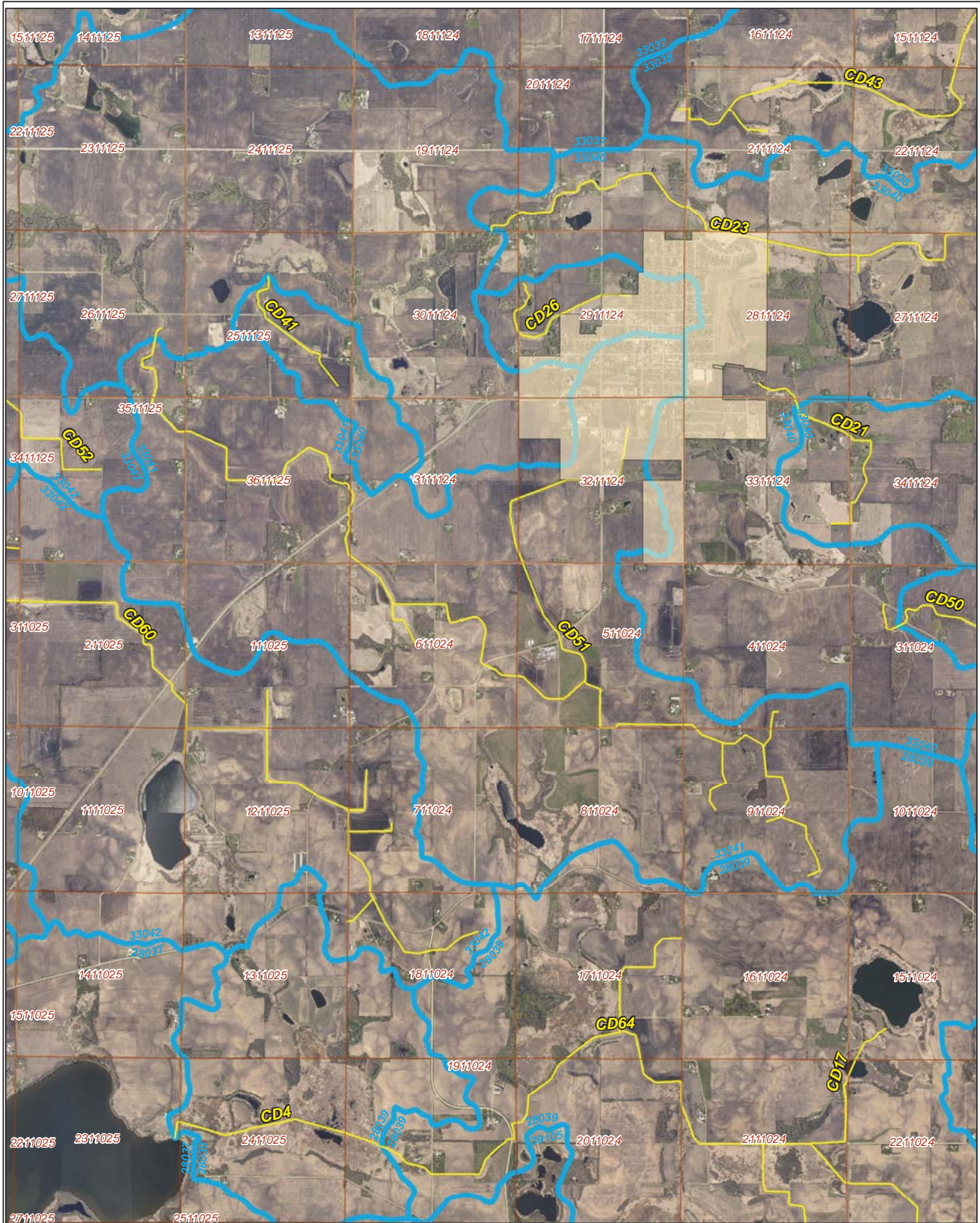
- Sections
- Cities
- Ditches**
-
-
- Ditch Watershed



N



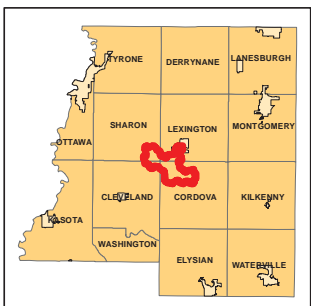
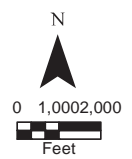
Ditch Watershed



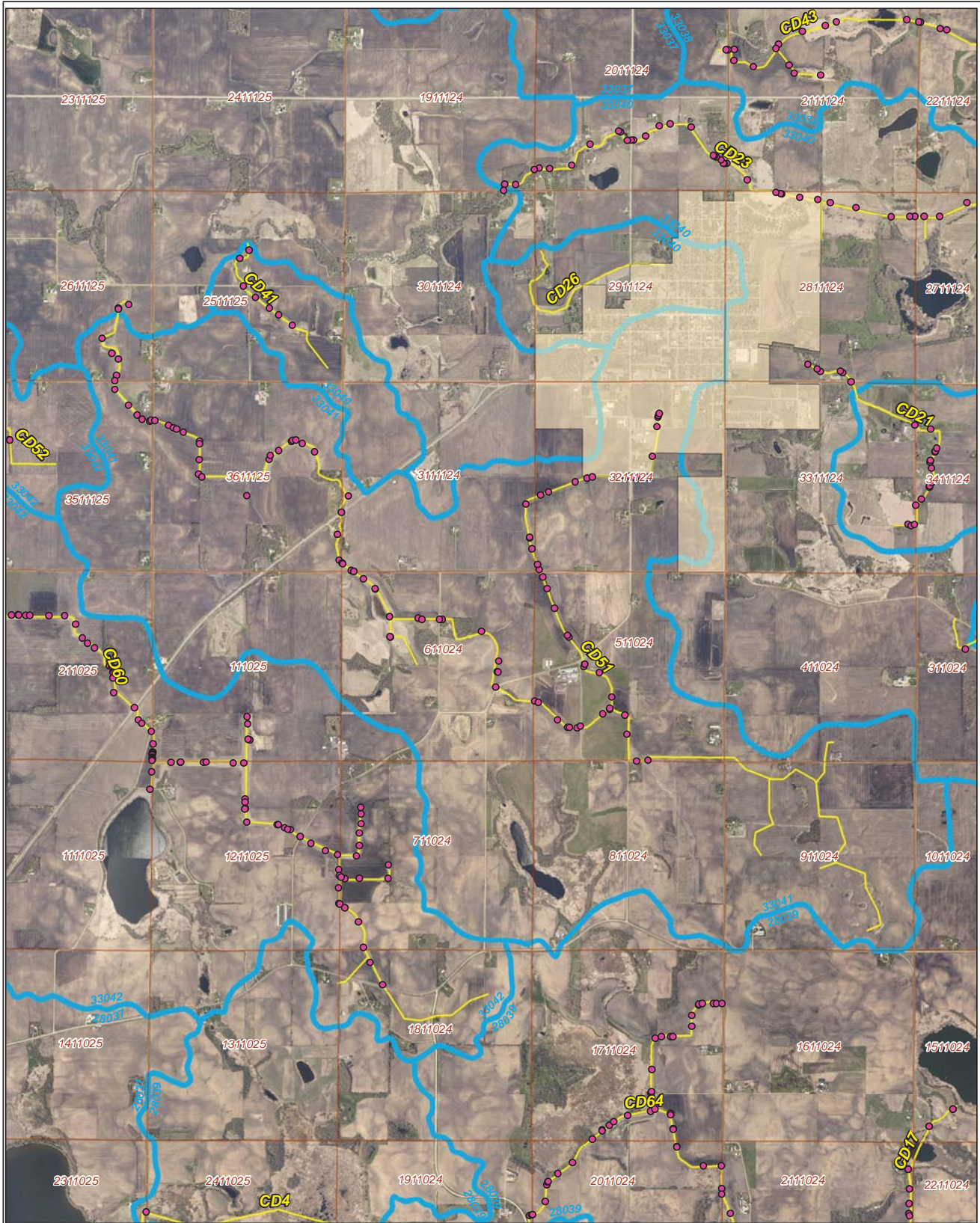
Legend

- Sections
- Cities
- Ditches
- Ditch Watershed

Ditch ID: 33041CD51
Acres: 5100.49



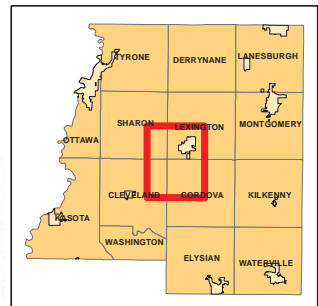
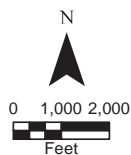
2006 Ditch Inventory



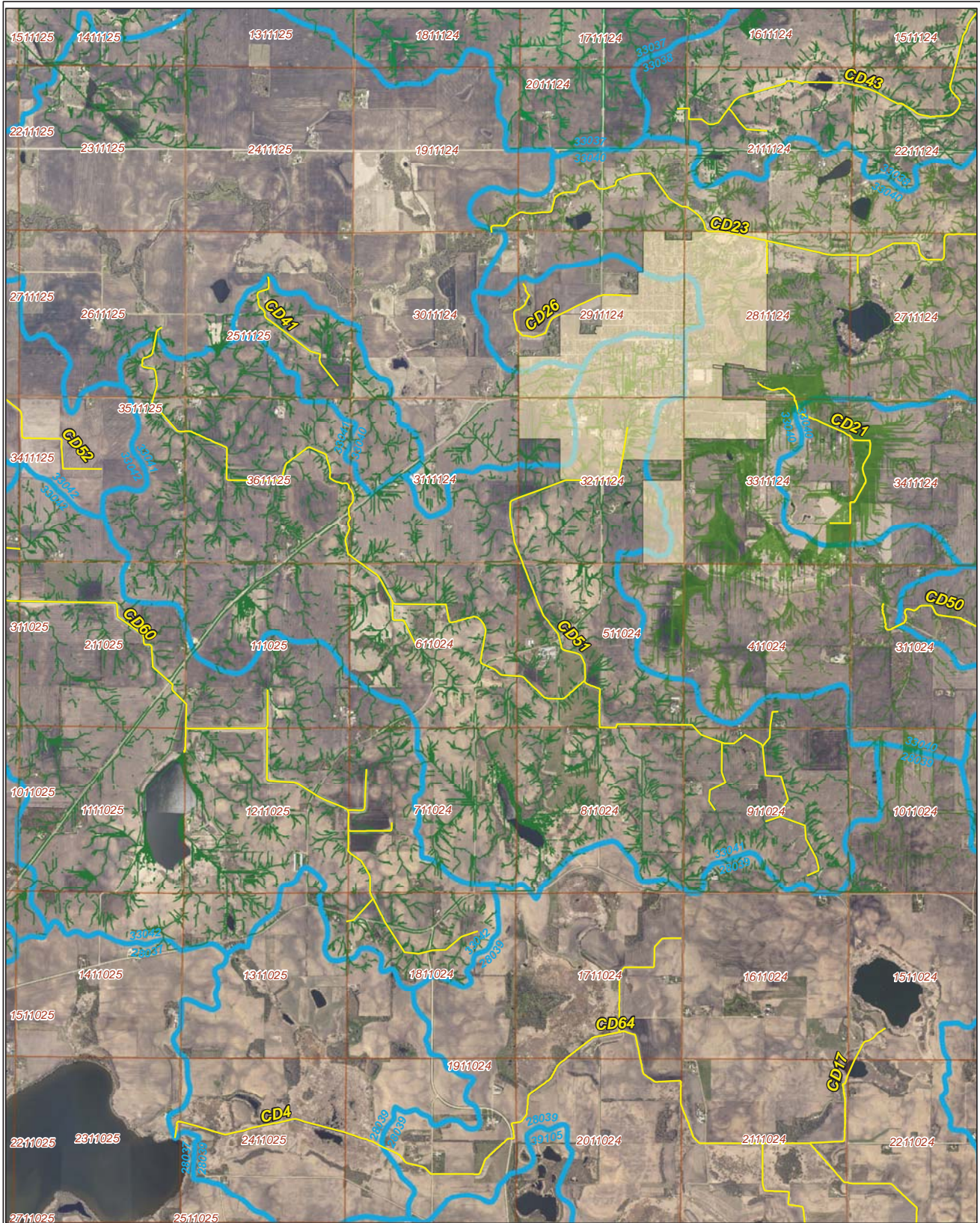
Legend

- Ditch Inventory
- Sections
- Cities
- Ditches
- Ditch Watershed






Ditch Name: CD51



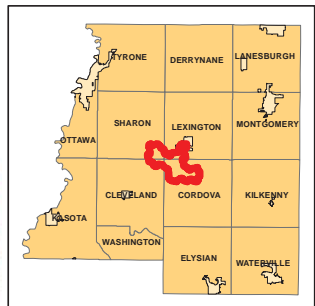
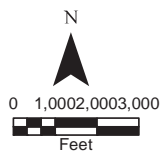
High Priority - Stream Power Index Sites



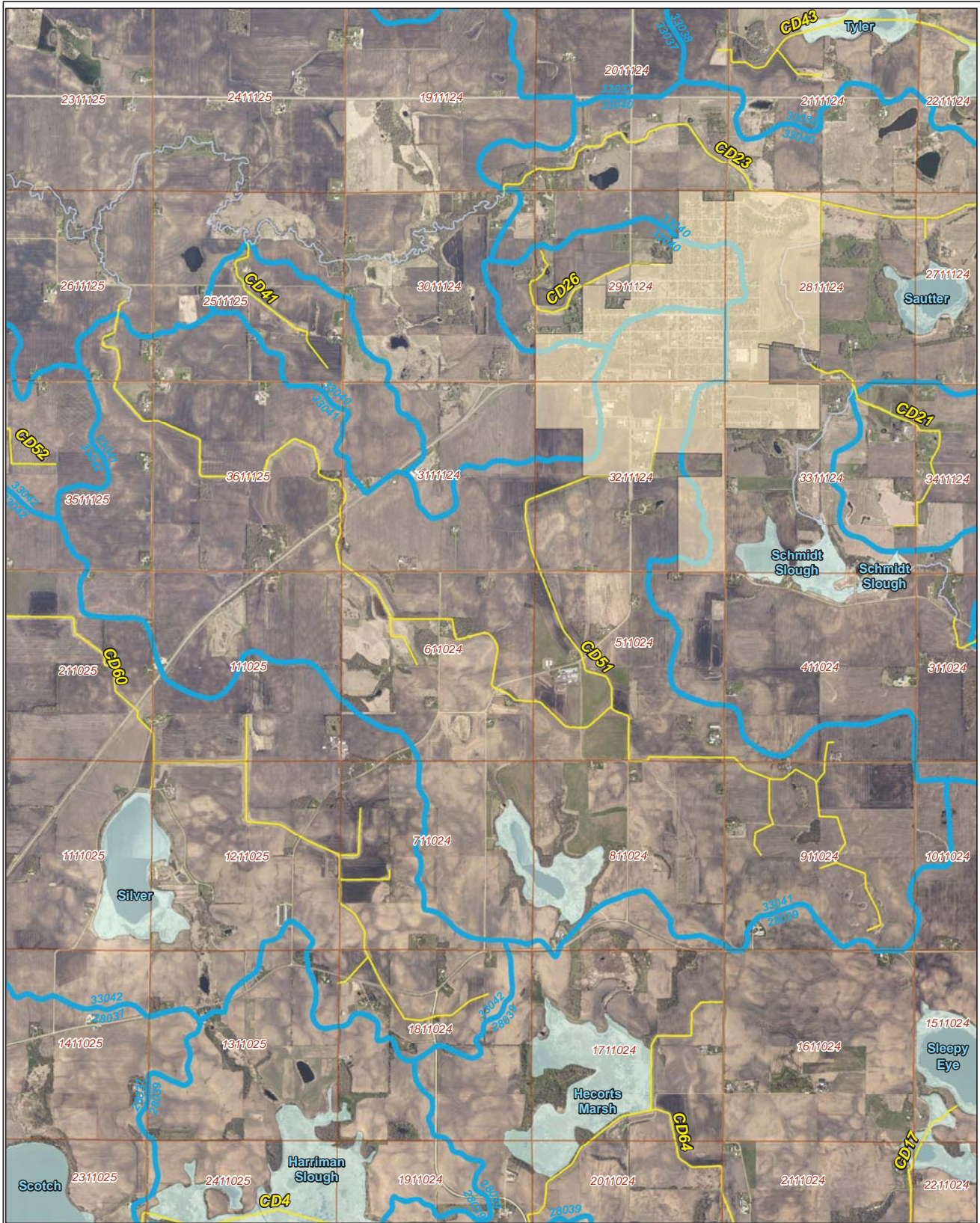
Legend

-  Sediment
-  Ditches
-  Sections
-  Cities
-  Ditch Watershed

Ditch Name: CD51

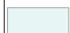







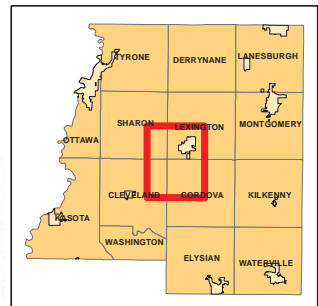
DNR Public Waters



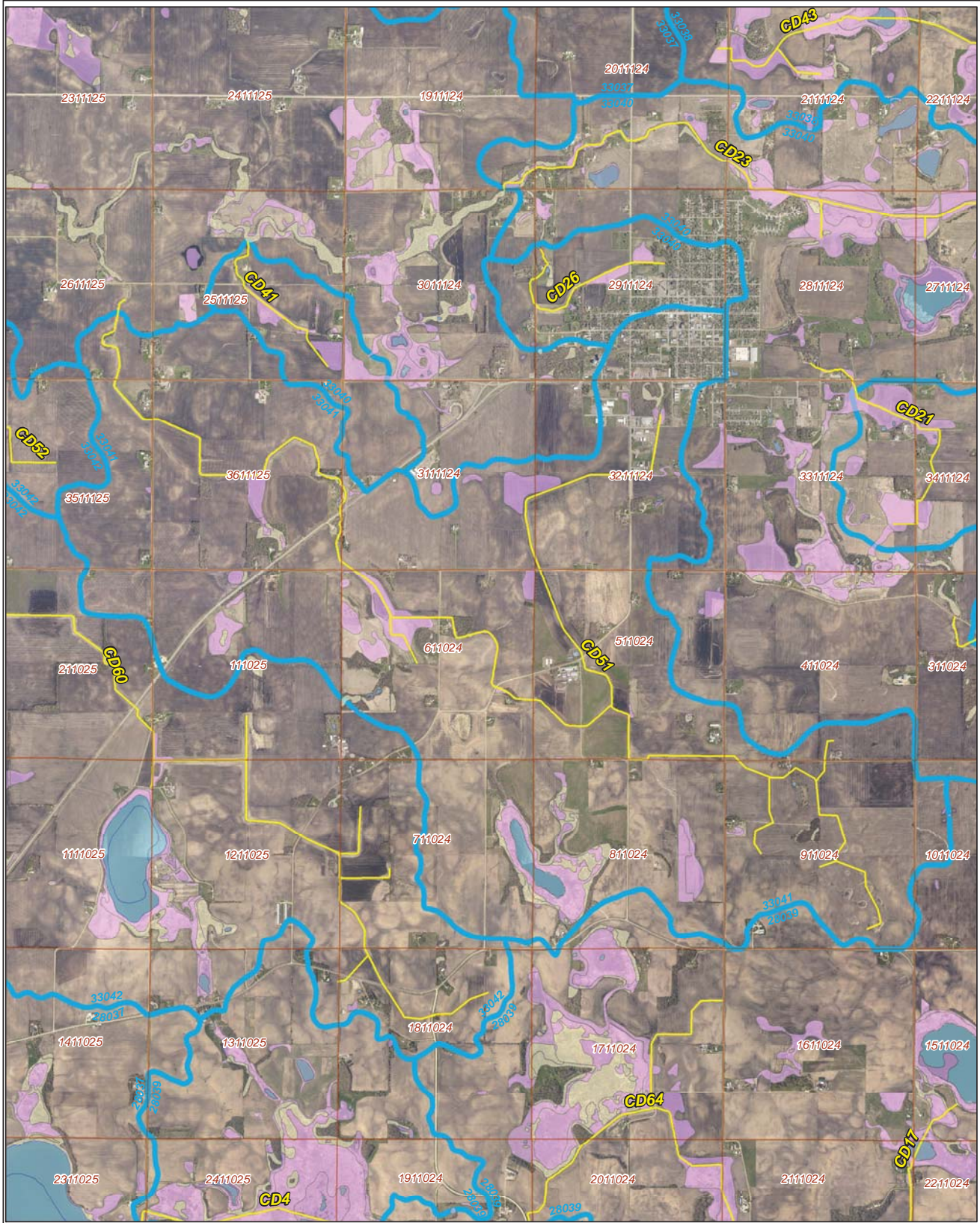
Ditch Name: CD51

Legend

-  DNR Public Lakes and Basins
-  DNR Rivers and Streams
-  Sections
-  Cities
-  Ditches
-  Ditch Watershed

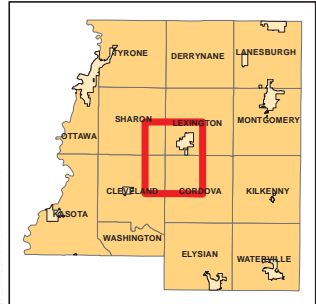
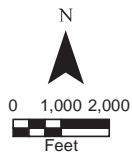


2015 Wetland Inventory

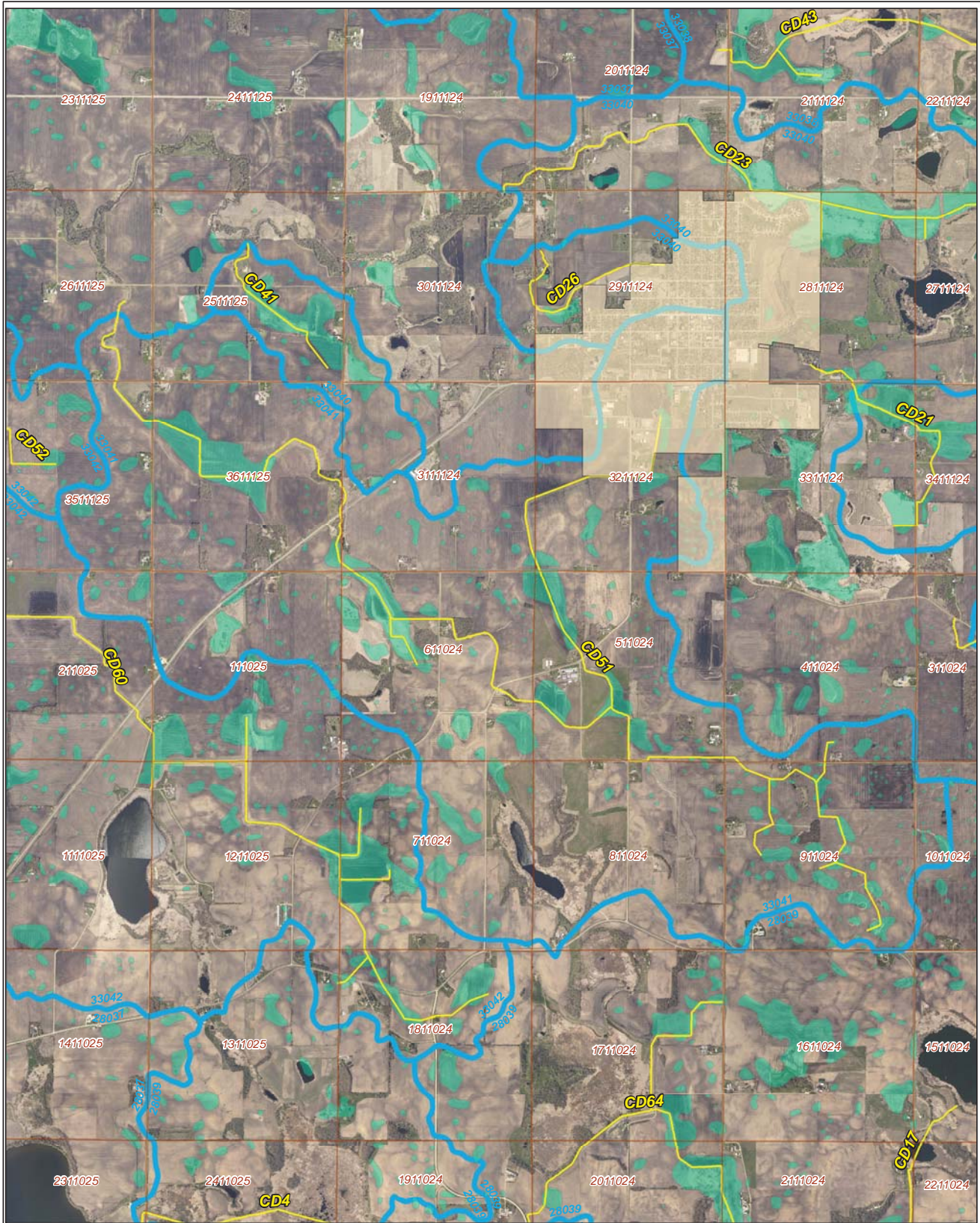


Ditch Name: CD51

Legend	
Wetland Type	
	Freshwater Emergent Wetland
	Freshwater Forested/Shrub Wetland
	Freshwater Pond
	Lake
	Riverine
	Sections
	Ditches
	Ditch Watershed



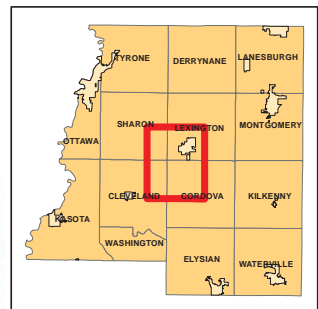
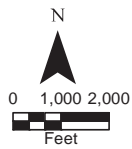
Restorable Wetlands



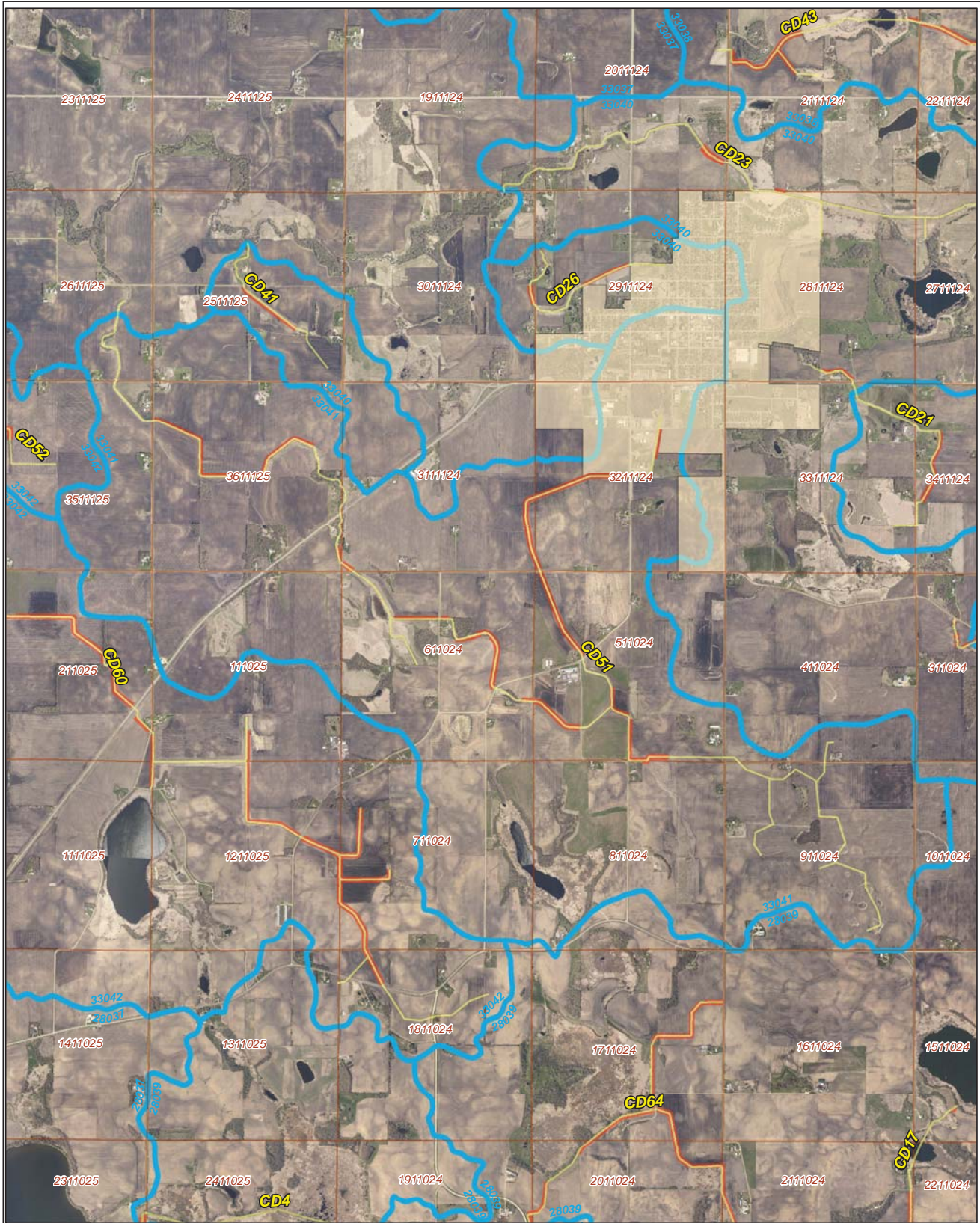
Ditch Name: CD51

Legend

- Retention Locations
- Sections
- Cities
- Ditches
- Ditch Watershed



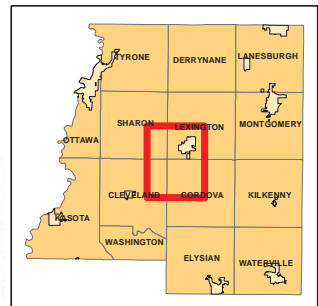
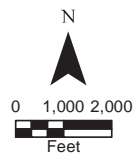
Ditch Buffer



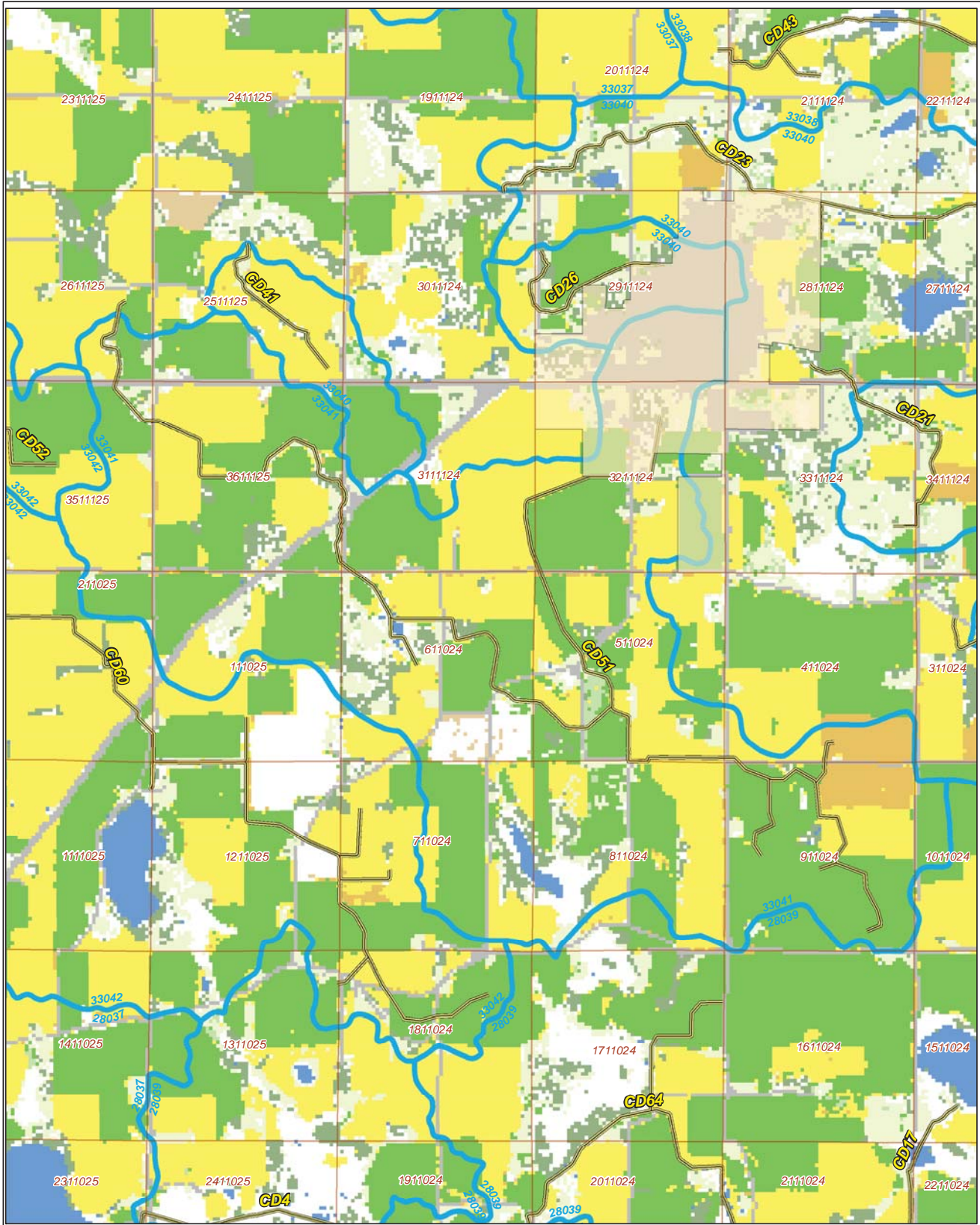
Legend

-  Ditches
-  Needs Buffer
-  Sections
-  Cities
-  Ditch Watershed

Ditch Name: CD51
Percent Buffered: 68.15%

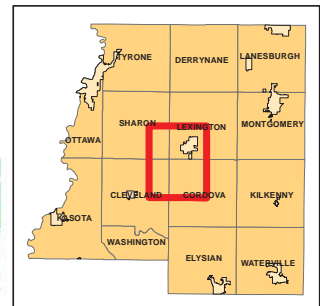


2015 Crop Coverage



Ditch Name: CD51

Legend	
Coverage Type	
	Open Water
	Alfalfa
	Corn
	Other Hay/Non Alfalfa
	Forest
	Developed Area
	Grass/Pasture
	Peas
	Soybeans
	Spring Wheat
	Sweet Corn
	Sections
	Cities
	Ditches
	Ditch Watershed



N

0 1,000 2,000 3,000 4,000 5,000 6,000



Feet