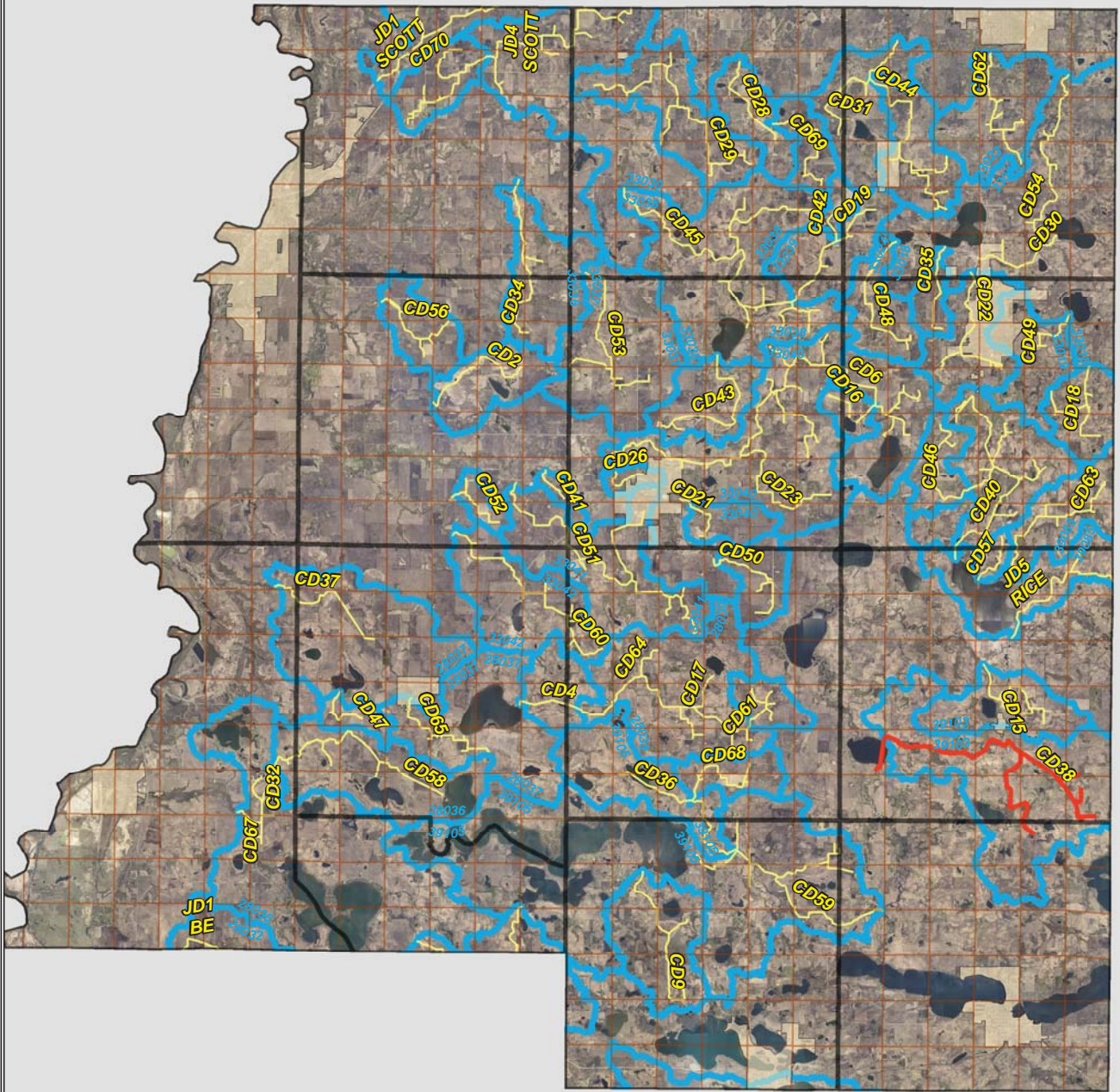
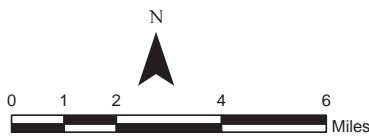
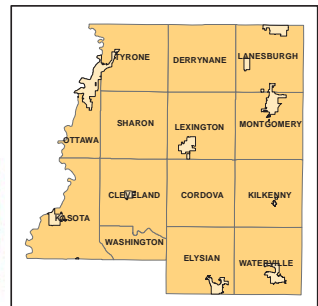


LO PAYS FOR CULVERTS

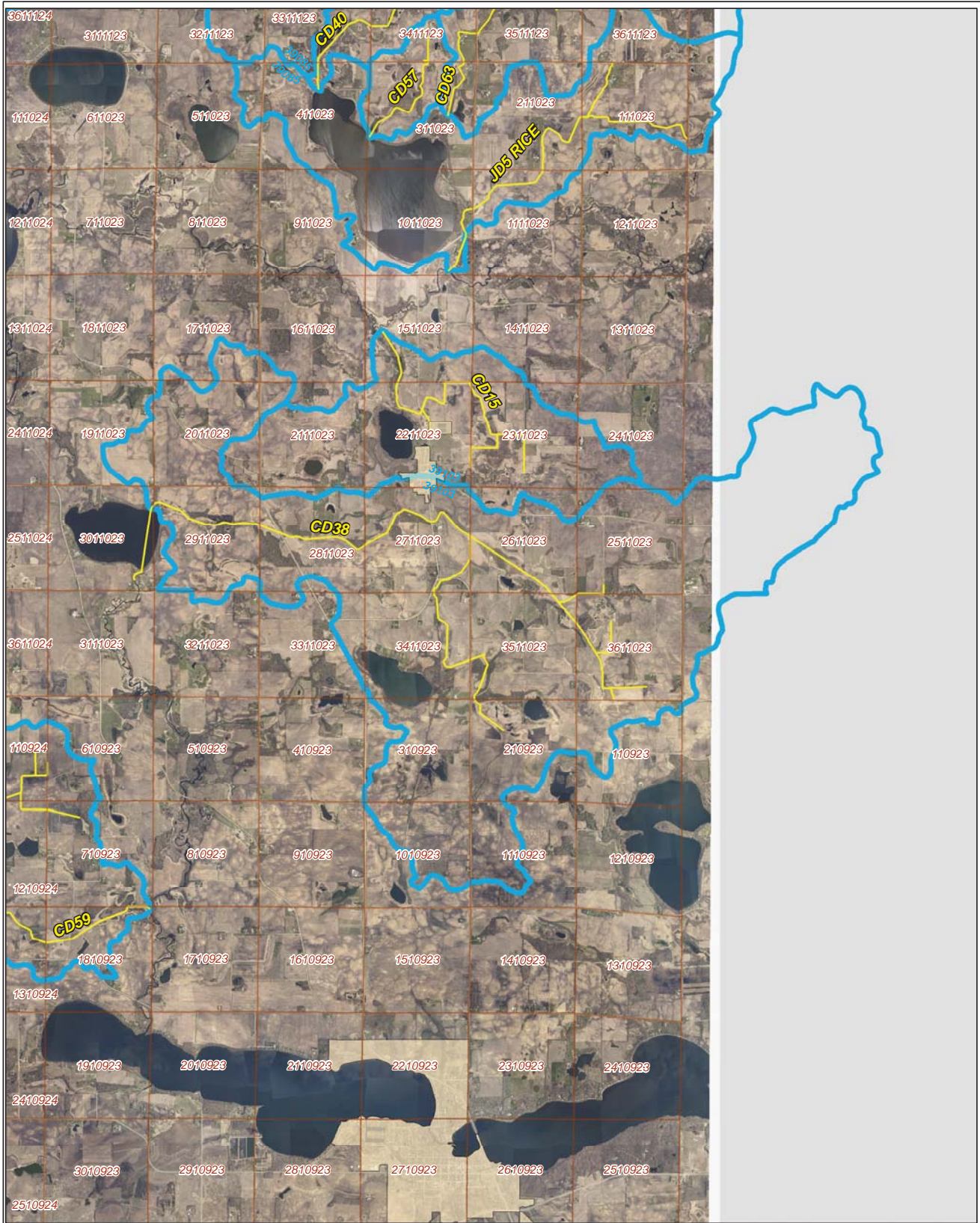


Legend





- Sections
- Cities
- Ditches
- Ditch Watershed



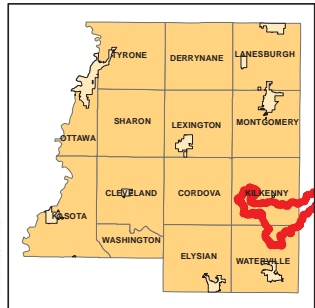
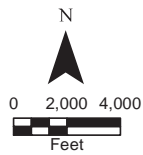
Ditch Watershed



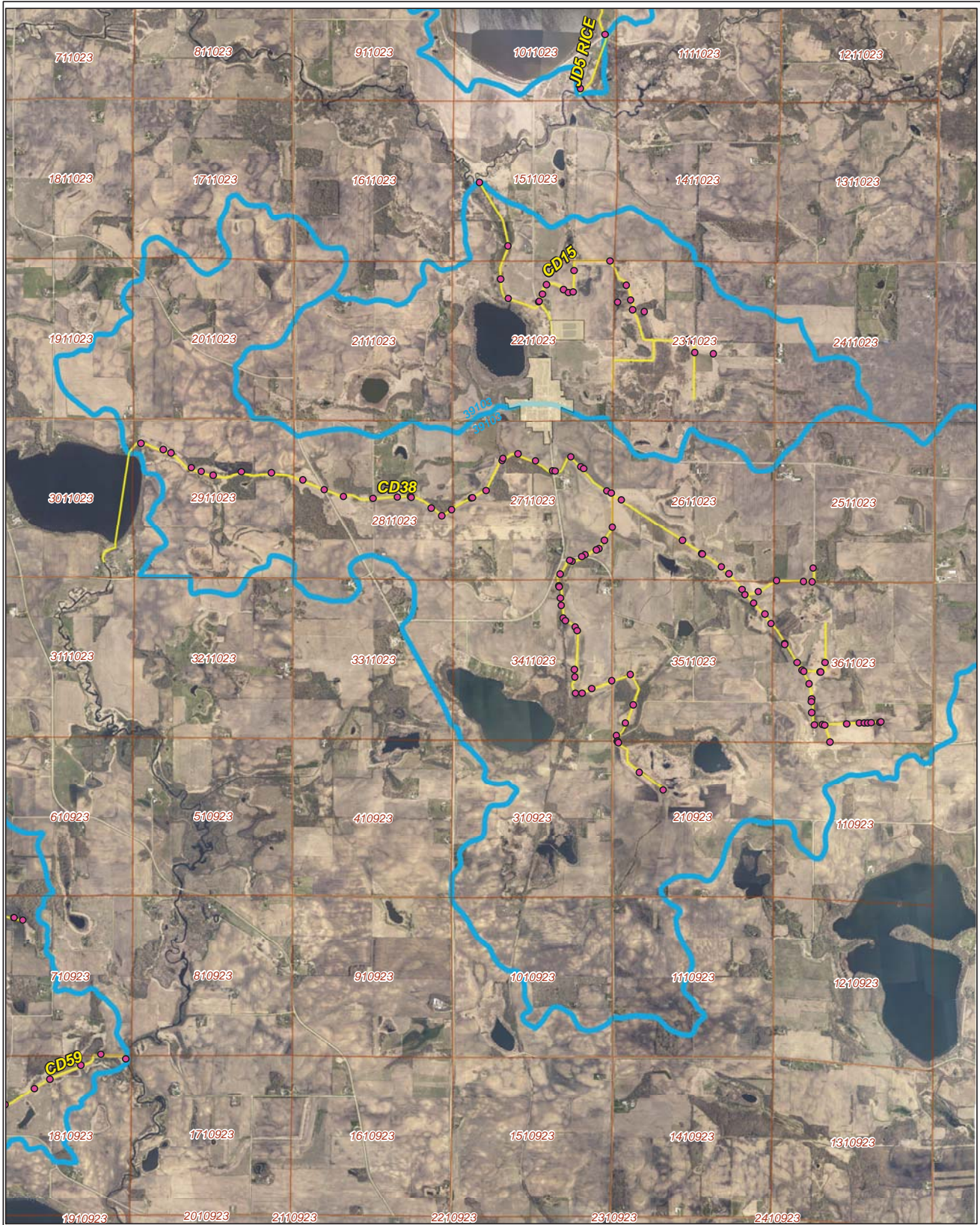
Legend

-  Sections
-  Cities
-  Ditches
-  Ditch Watershed

Ditch ID: 39103CD38
Acres: 9300.71



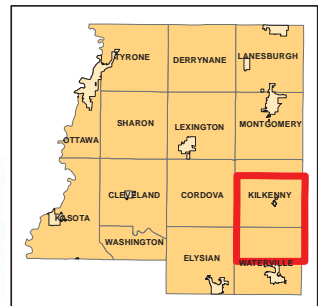
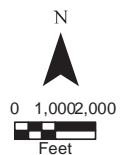
2006 Ditch Inventory



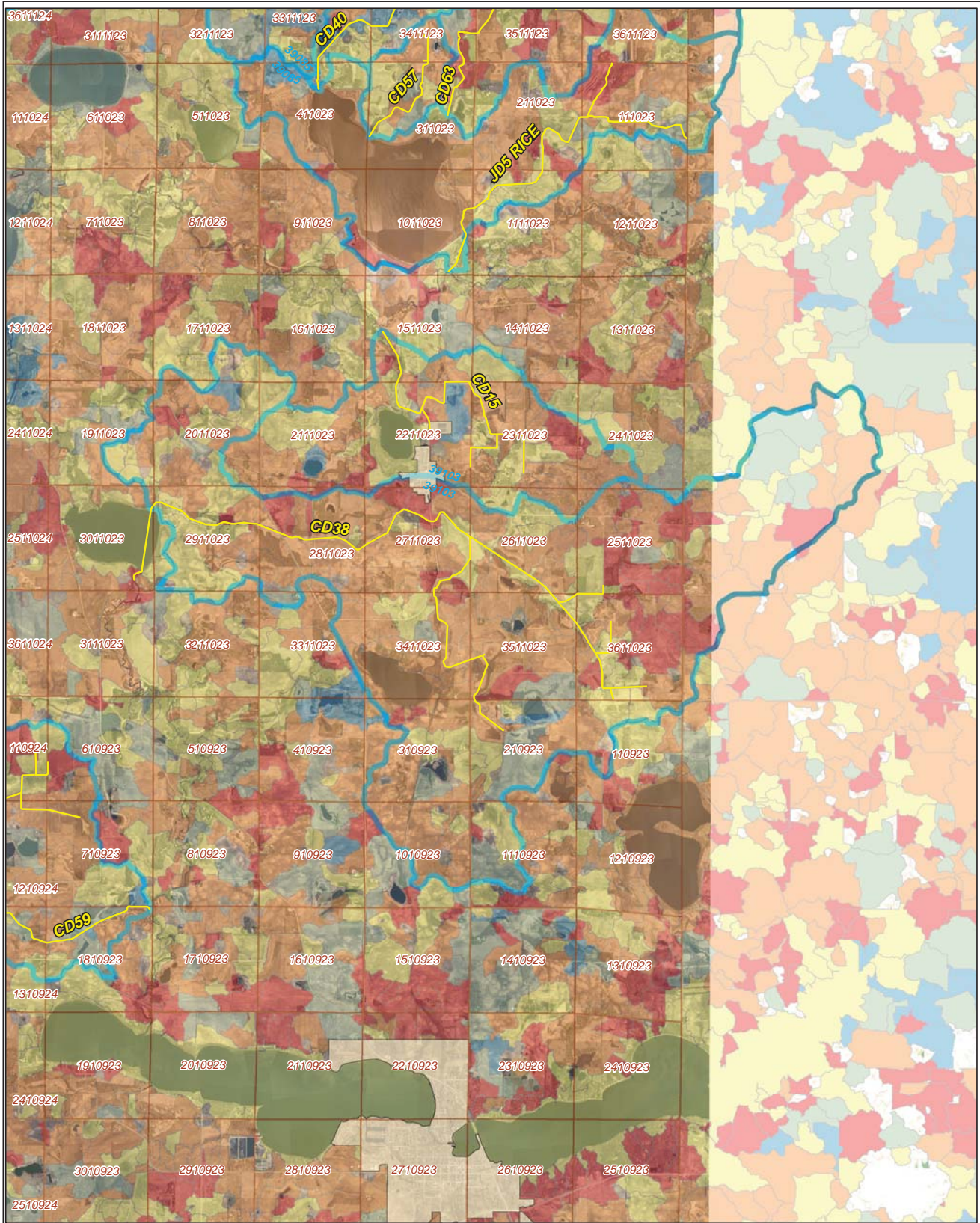
Legend

- Ditch Inventory
- Sections
- Cities
- Ditches
- Ditch Watershed

Ditch Name: CD38

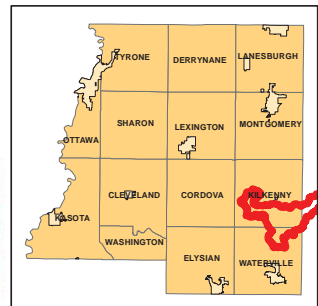
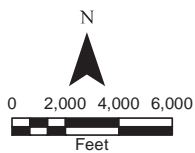


High Priority - Stream Power Index Sites



Ditch Name: CD38

Legend	
Mean SPI Rank	Combined Sediment and SPI Rank
Low	Low
Low/Moderate	Low/Moderate
Moderate	Moderate
High/Moderate	Moderate/High
High	High
	— Ditches
	— Sections
	— Cities
	— Ditch Watershed



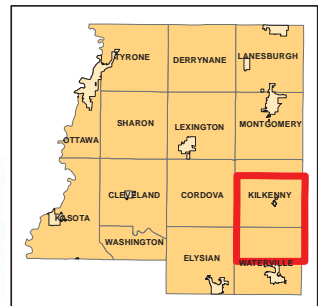
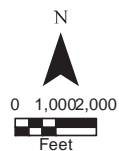
DNR Public Waters



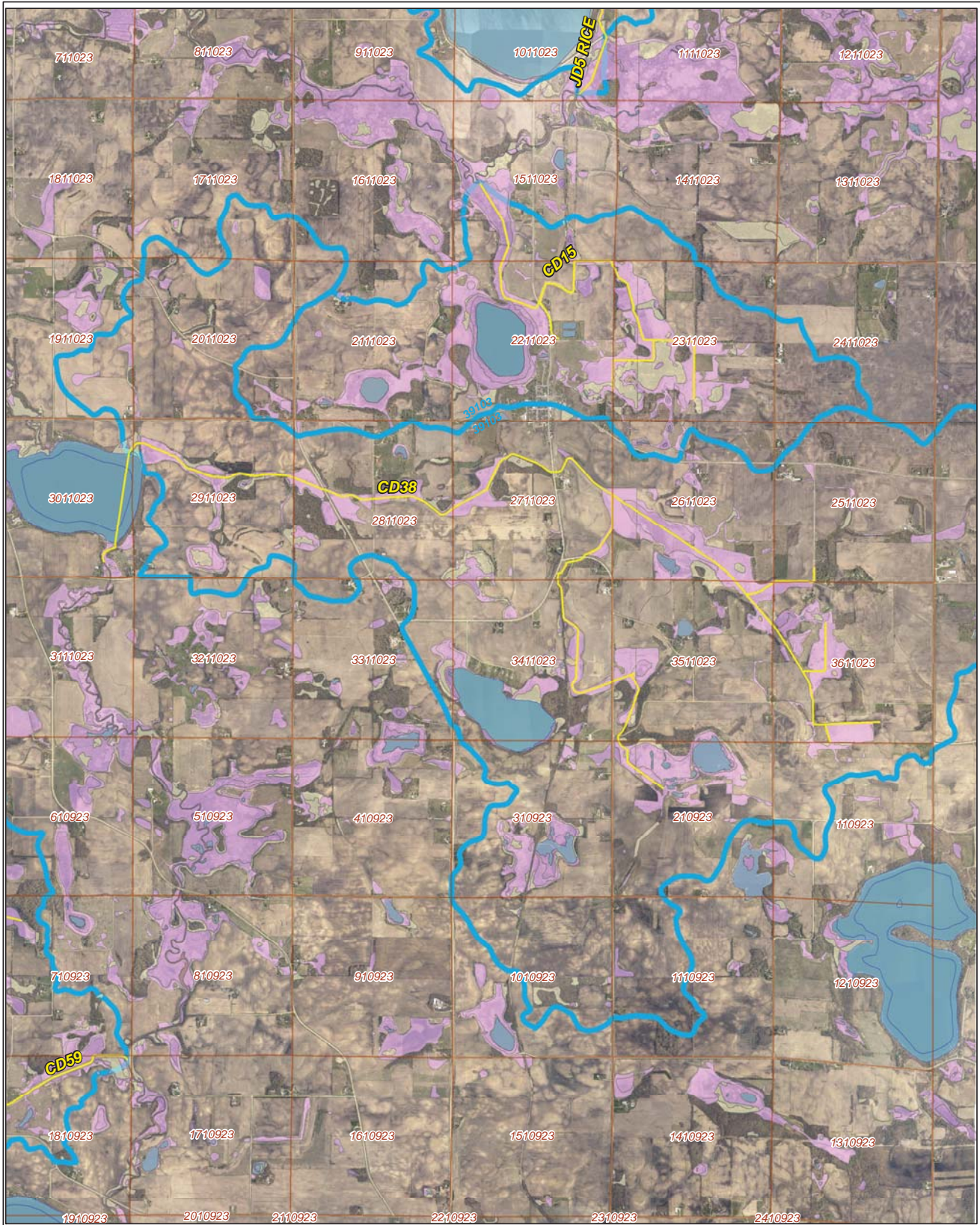
Ditch Name: CD38

Legend

- DNR Public Lakes and Basins
- DNR Rivers and Streams
- Sections
- Cities
- Ditches
- Ditch Watershed



2015 Wetland Inventory



Ditch Name: CD38

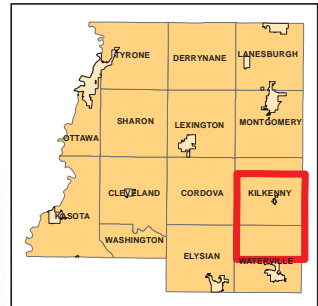
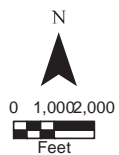
Legend

Wetland Type

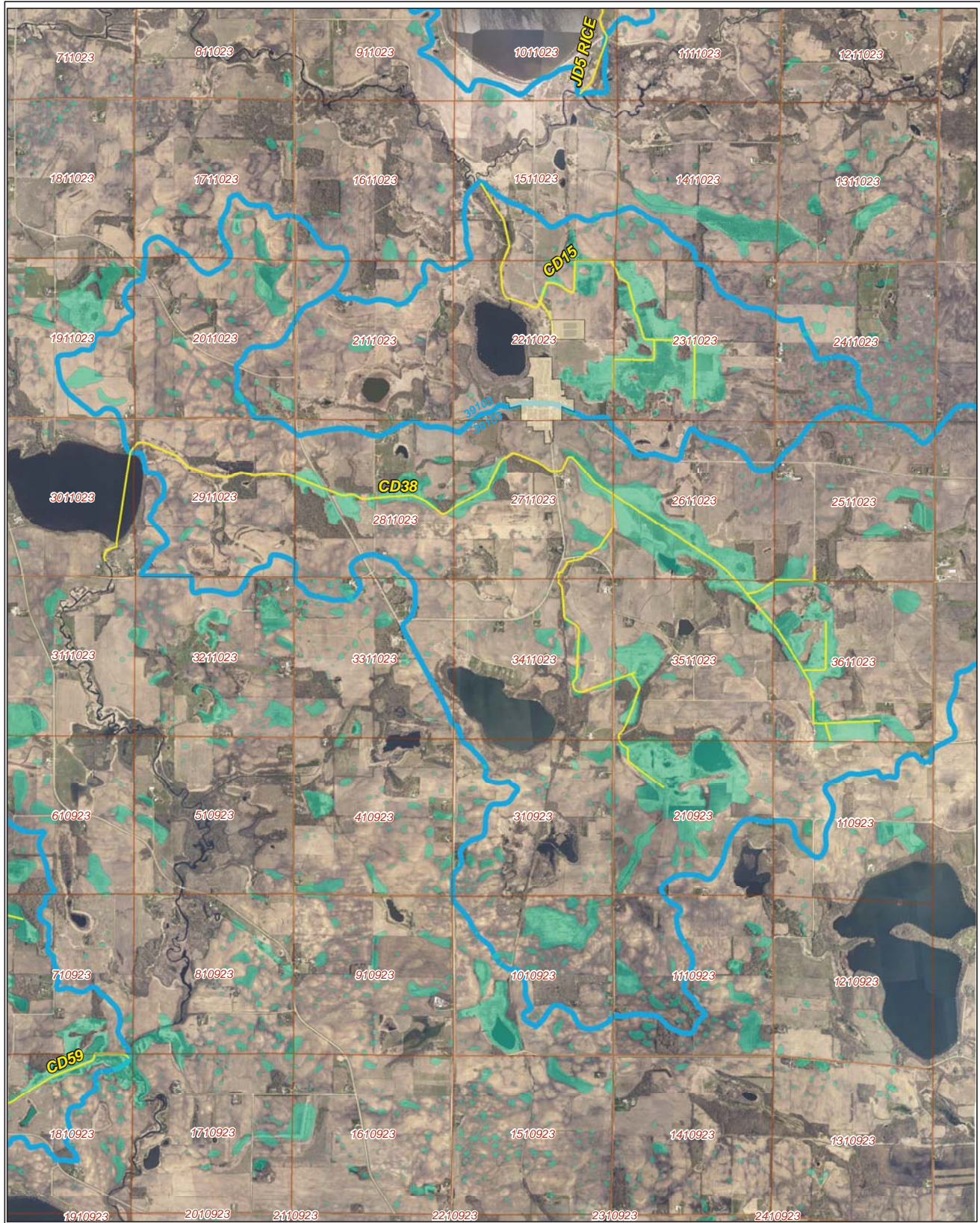
- Freshwater Emergent Wetland
- Freshwater Forested/Shrub Wetland
- Freshwater Pond
- Lake
- Riverine

Other Features:

- Sections
- Ditches
- Ditch Watershed



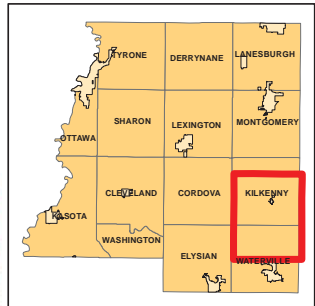
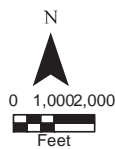
Restorable Wetlands



Ditch Name: CD38

Legend




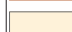
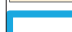
- Retention Locations
- Sections
- Cities
- Ditches
- Ditch Watershed



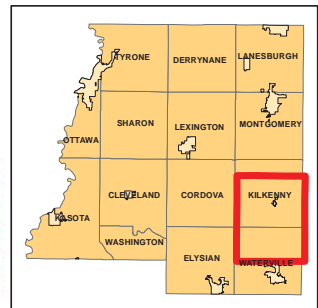
Ditch Buffer



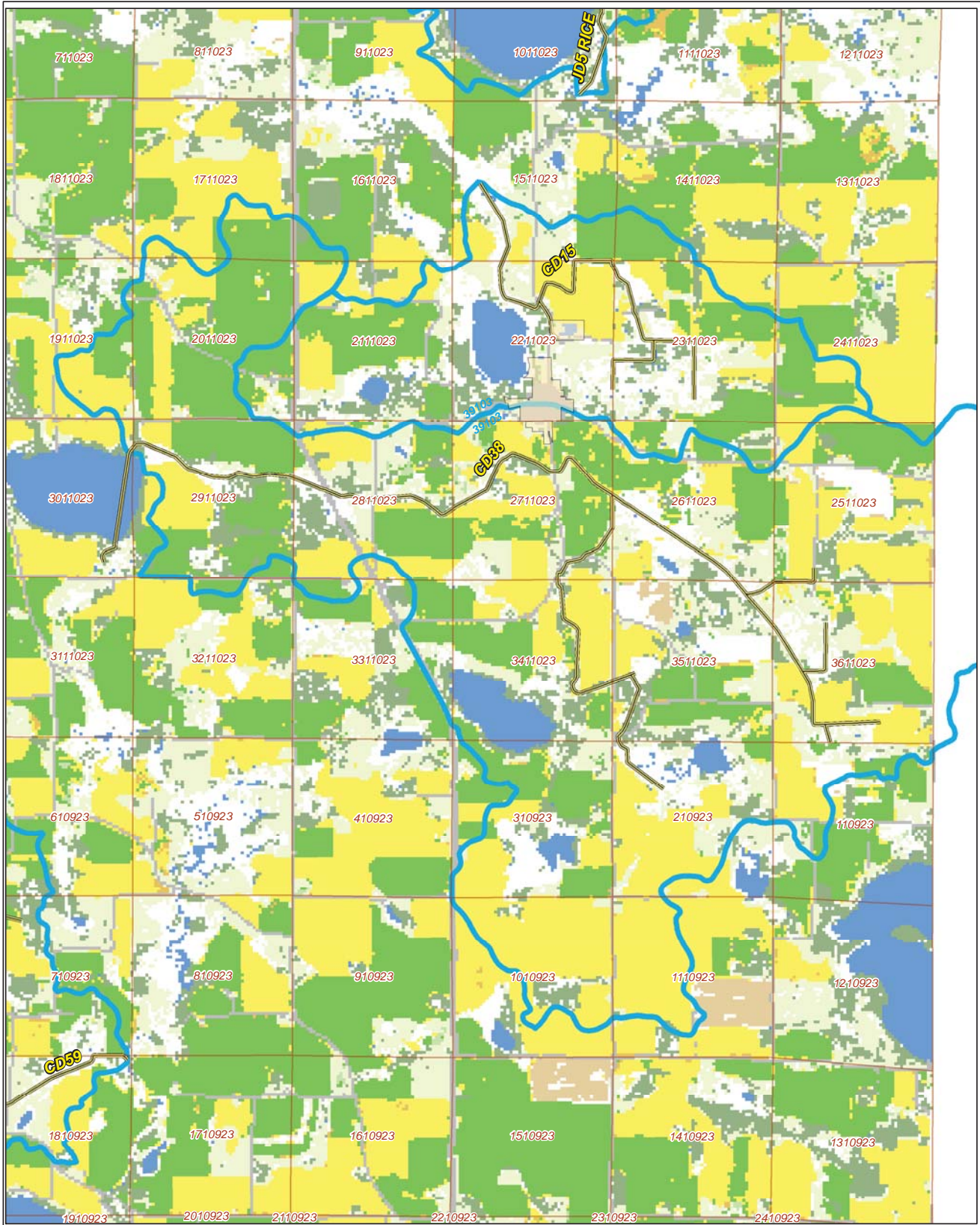
Legend

-  Ditches
-  Needs Buffer
-  Sections
-  Cities
-  Ditch Watershed

Ditch Name: CD38
Percent Buffered: 86.26%



2015 Crop Coverage



Ditch Name: CD38

Legend	
Coverage Type	
Open Water	Sections
Alfalfa	Other Hay/Non Alfalfa
Corn	Peas
Forest	Soybeans
Developed Area	Spring Wheat
Grass/Pasture	Sweet Corn
	Ditches
	Ditch Watershed

