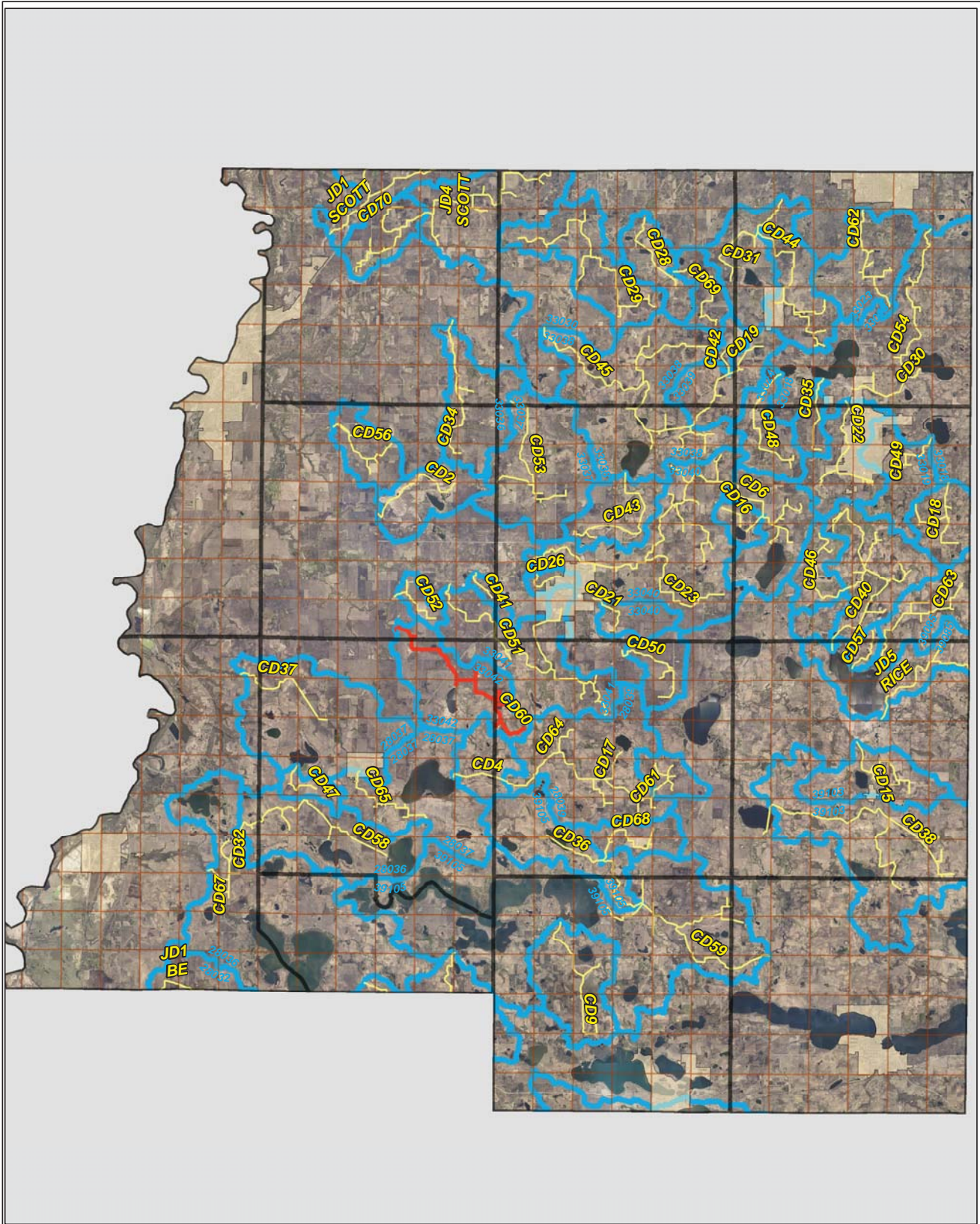


# CD 60

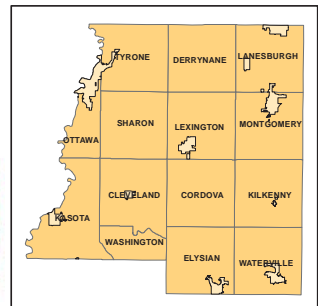


**Legend**

- Sections
- Cities
- Ditches**
- 
- 
- Ditch Watershed



N

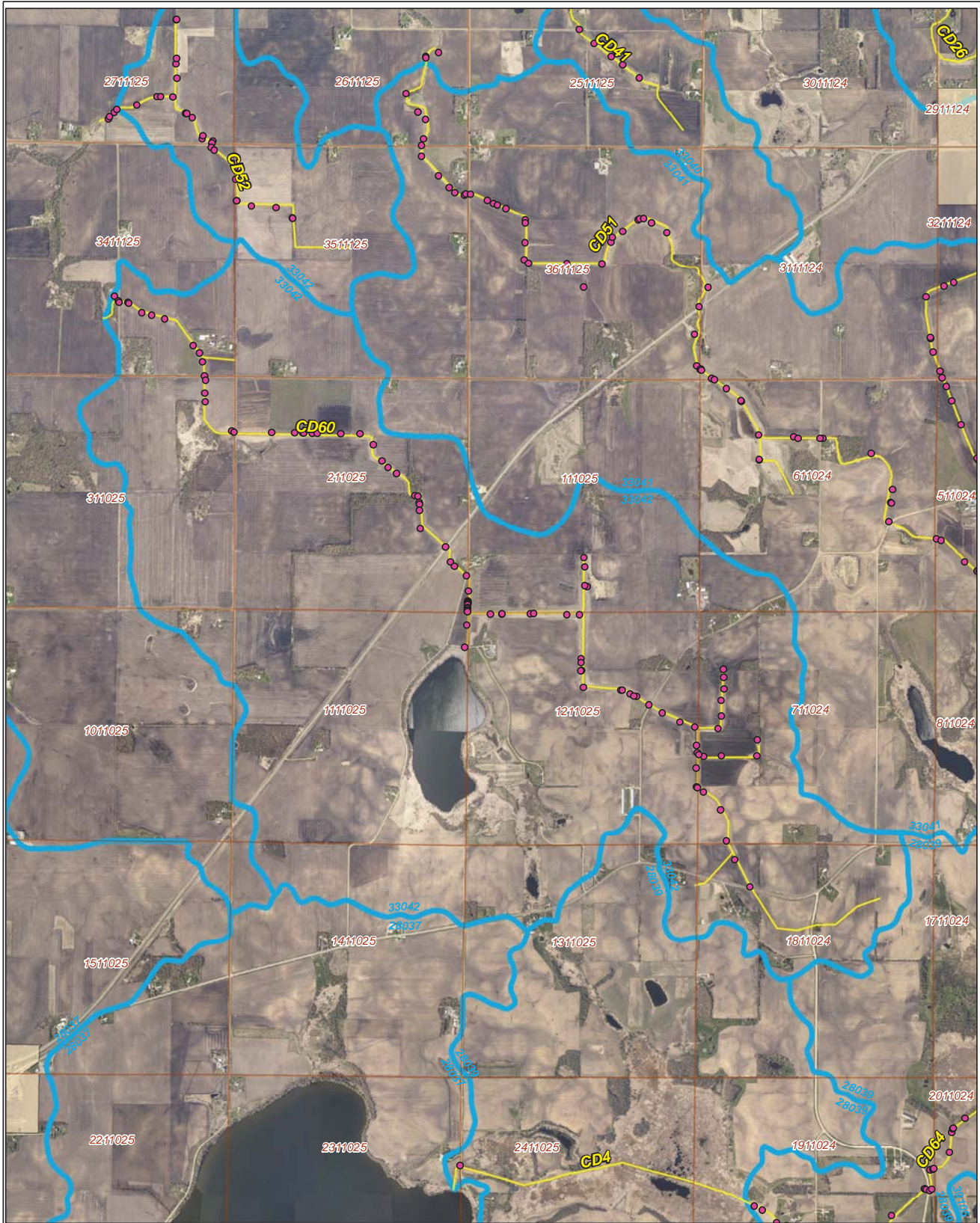








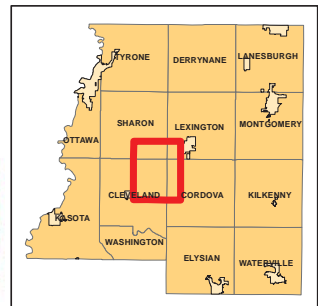
# 2006 Ditch Inventory



## Legend

- Ditch Inventory
- Sections
- Cities
- Ditches
- Ditch Watershed

Ditch Name: CD60

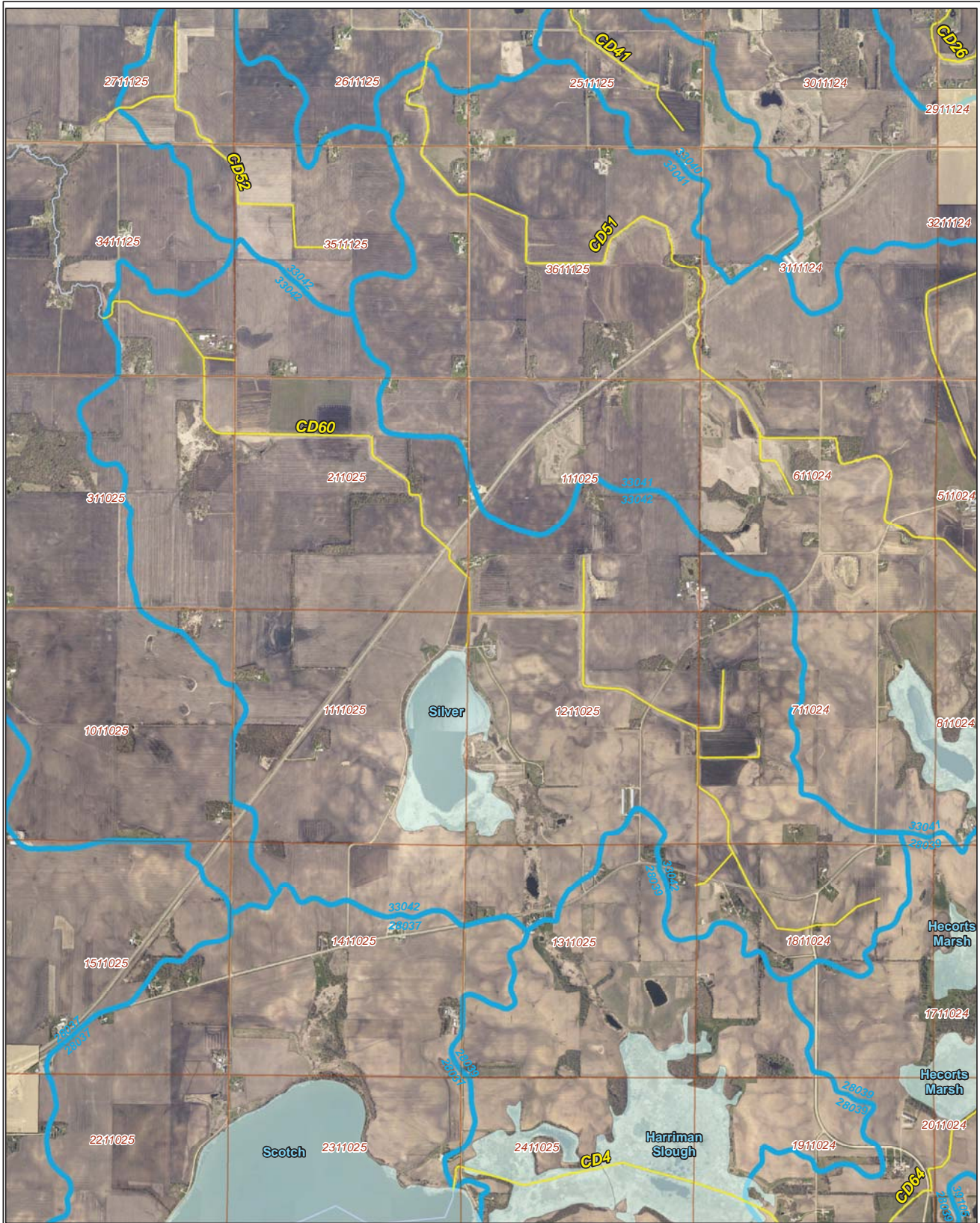






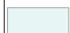







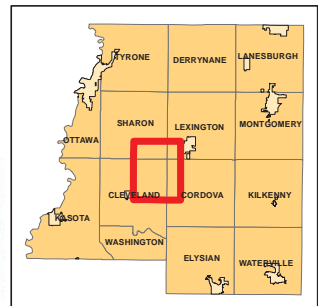
# DNR Public Waters



Ditch Name: CD60

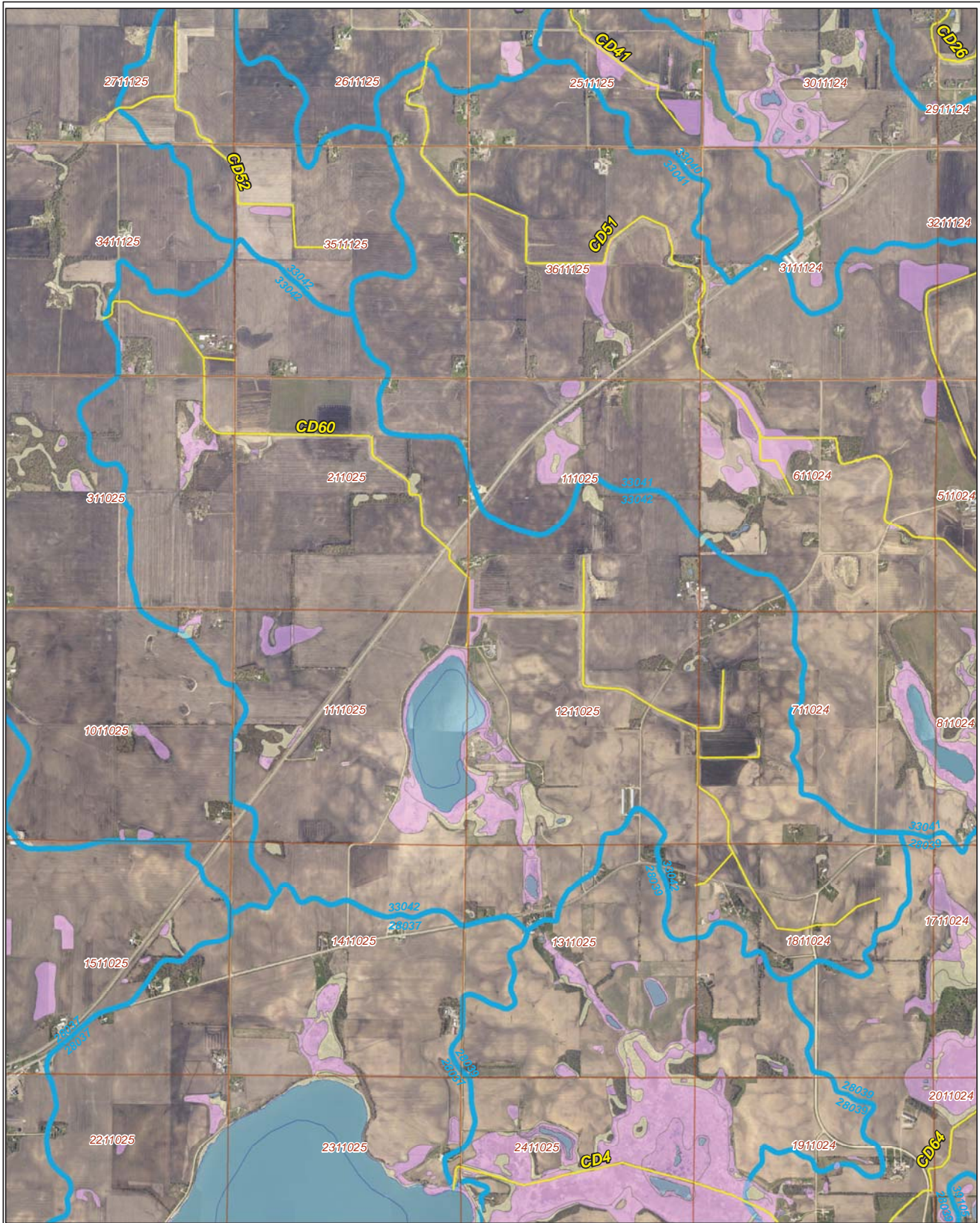
## Legend

-  DNR Public Lakes and Basins
-  DNR Rivers and Streams
-  Sections
-  Cities
-  Ditches
-  Ditch Watershed



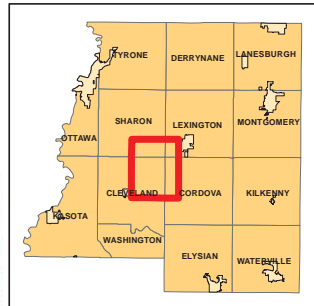


# 2015 Wetland Inventory



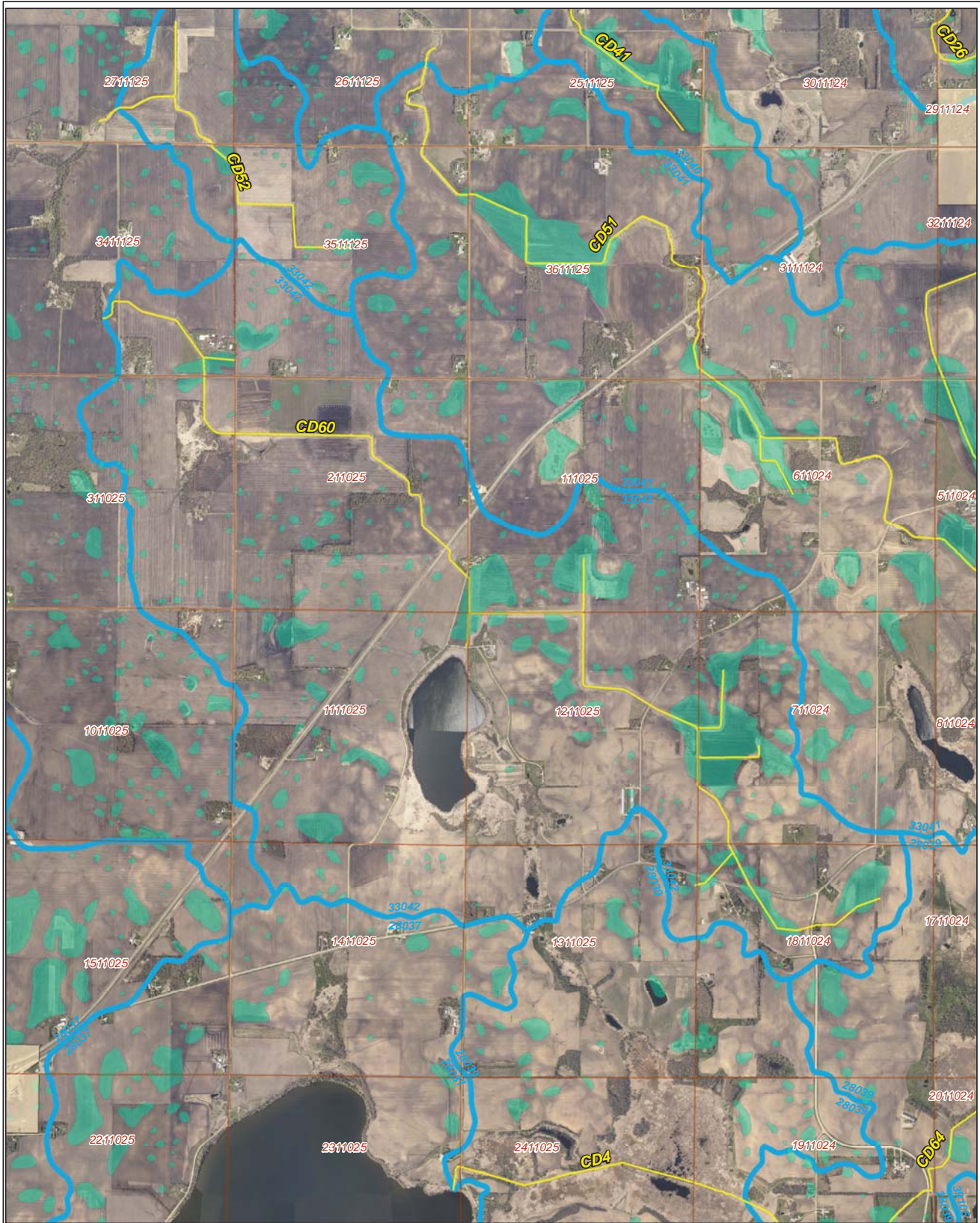
Ditch Name: CD60

Legend	
Wetland Type	
	Freshwater Emergent Wetland
	Freshwater Forested/Shrub Wetland
	Freshwater Pond
	Lake
	Riverine
	Sections
	Ditches
	Ditch Watershed





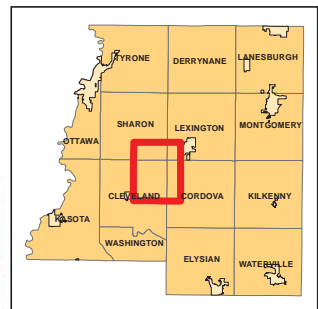
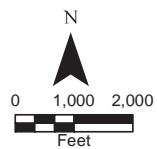
# Restorable Wetlands



Ditch Name: CD60

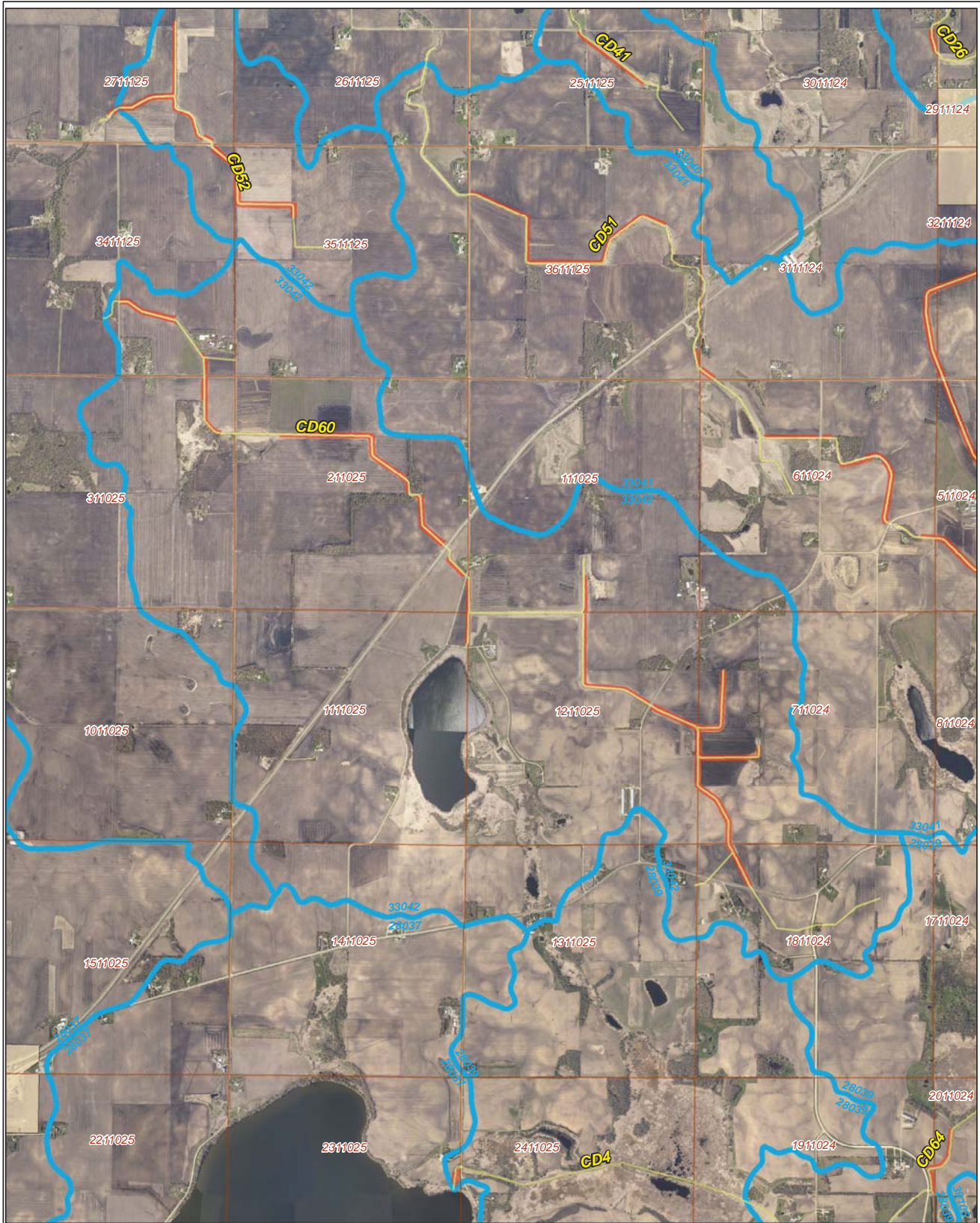
## Legend

- Retention Locations
- Sections
- Cities
- Ditches
- Ditch Watershed





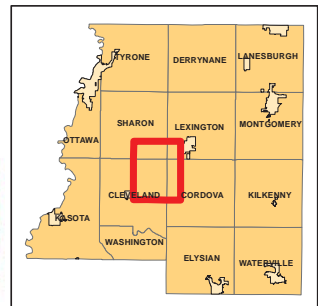
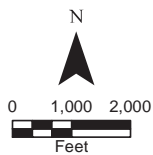
# Ditch Buffer



## Legend

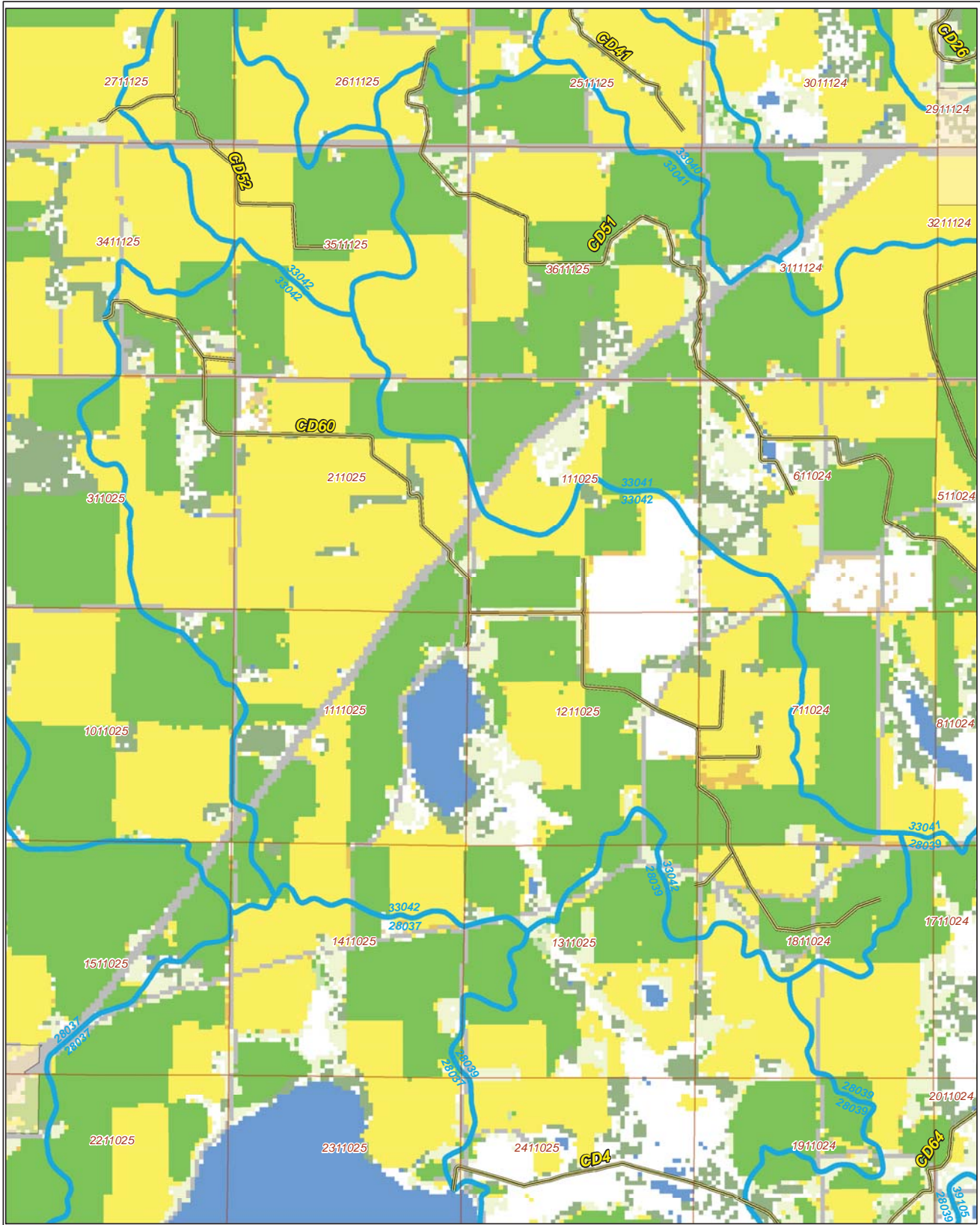
-  Ditches
-  Needs Buffer
-  Sections
-  Cities
-  Ditch Watershed

Ditch Name: CD60  
Percent Buffered: 47.96%





# 2015 Crop Coverage



Ditch Name: CD60

Legend	
<b>Coverage Type</b>	
Open Water	Sections
Alfalfa	Other Hay/Non Alfalfa
Corn	Peas
Forest	Soybeans
Developed Area	Spring Wheat
Grass/Pasture	Sweet Corn
	Ditches
	Ditch Watershed

