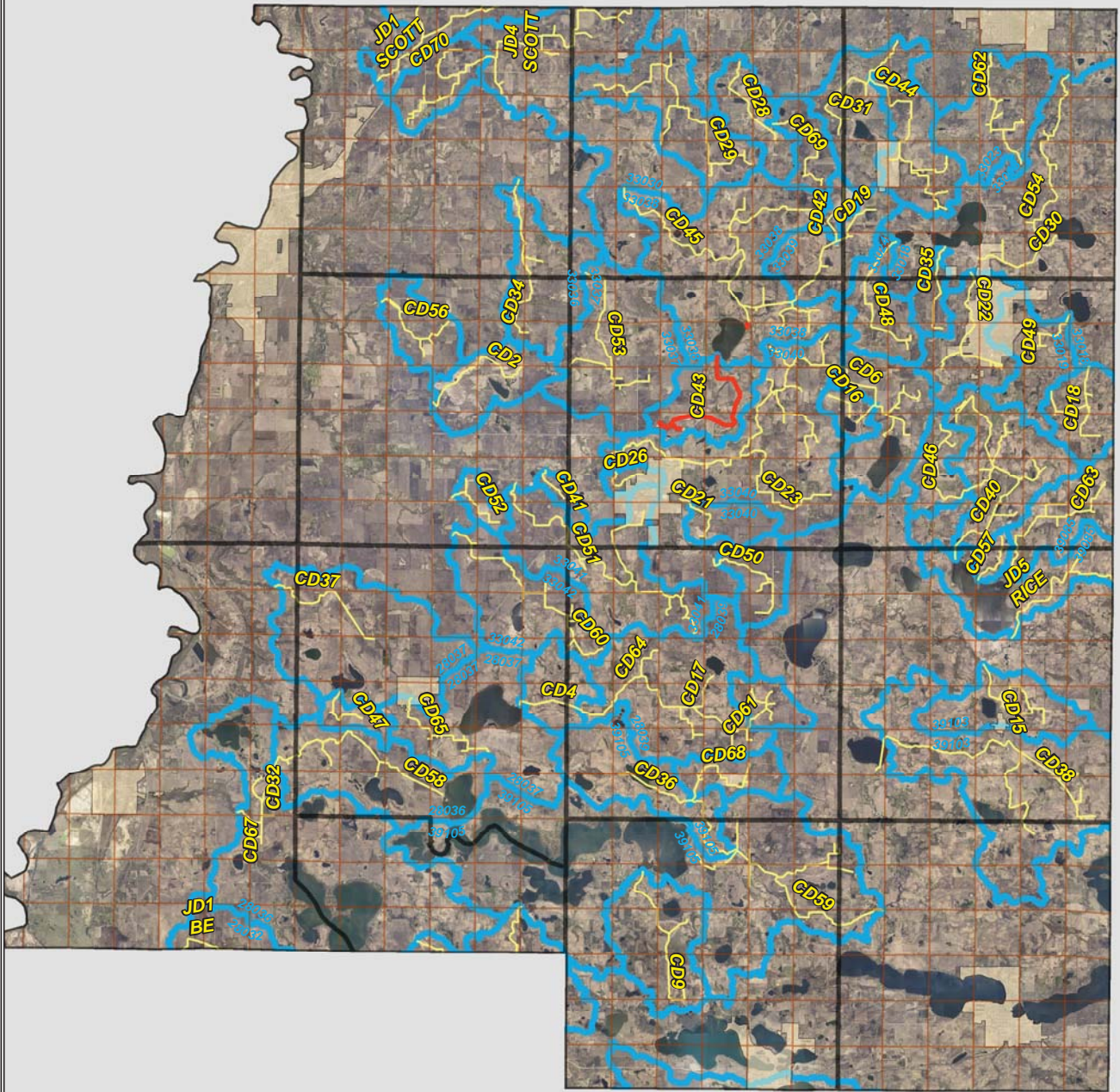


CD 43

LO PAYS FOR CULVERTS

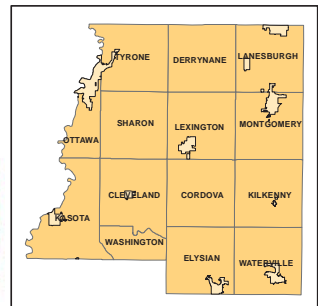


Legend

- Sections
- Cities
- Ditches**
-
-
- Ditch Watershed



N



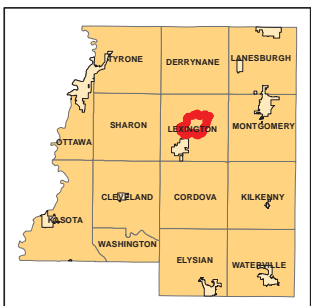
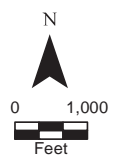
Ditch Watershed



Legend

- Sections
- Cities
- Ditches
- Ditch Watershed

Ditch ID: 33038CD43
Acres: 2061.03



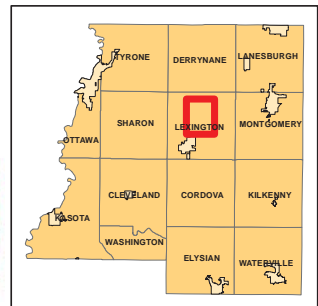
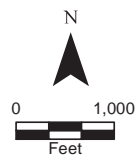
2006 Ditch Inventory



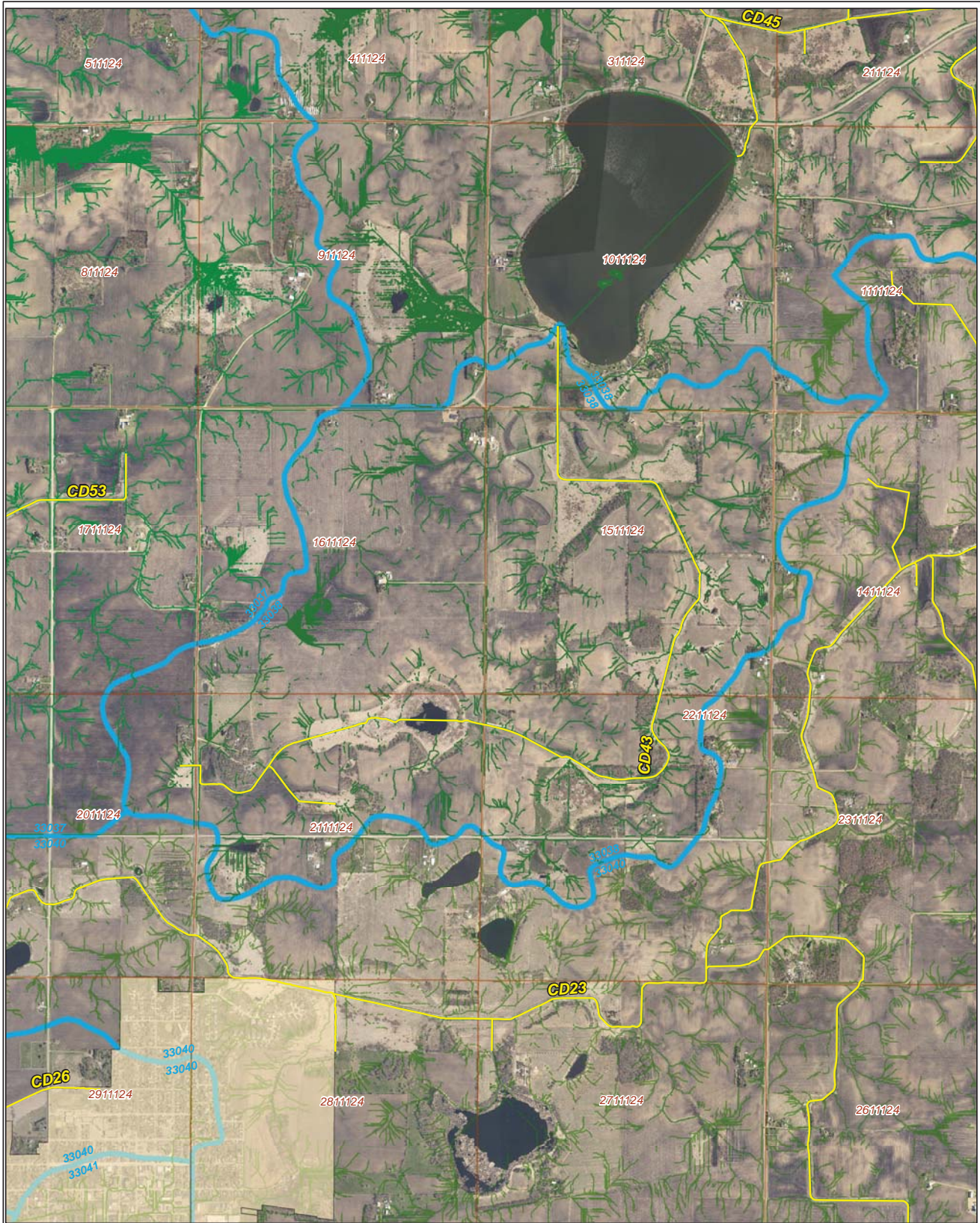
Legend

- Ditch Inventory
- Sections
- Cities
- Ditches
- Ditch Watershed






Ditch Name: CD43



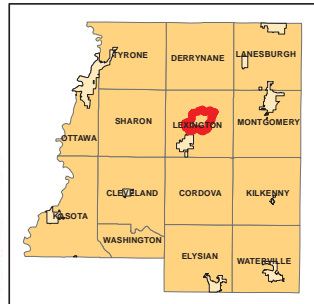
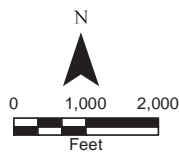
High Priority - Stream Power Index Sites



Legend

-  Sediment
-  Ditches
-  Sections
-  Cities
-  Ditch Watershed

Ditch Name: CD43



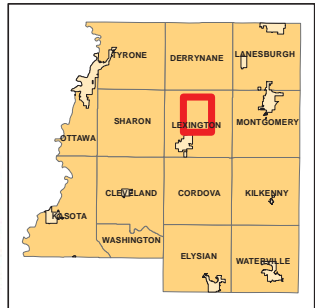
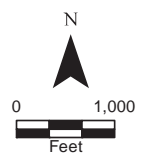
DNR Public Waters



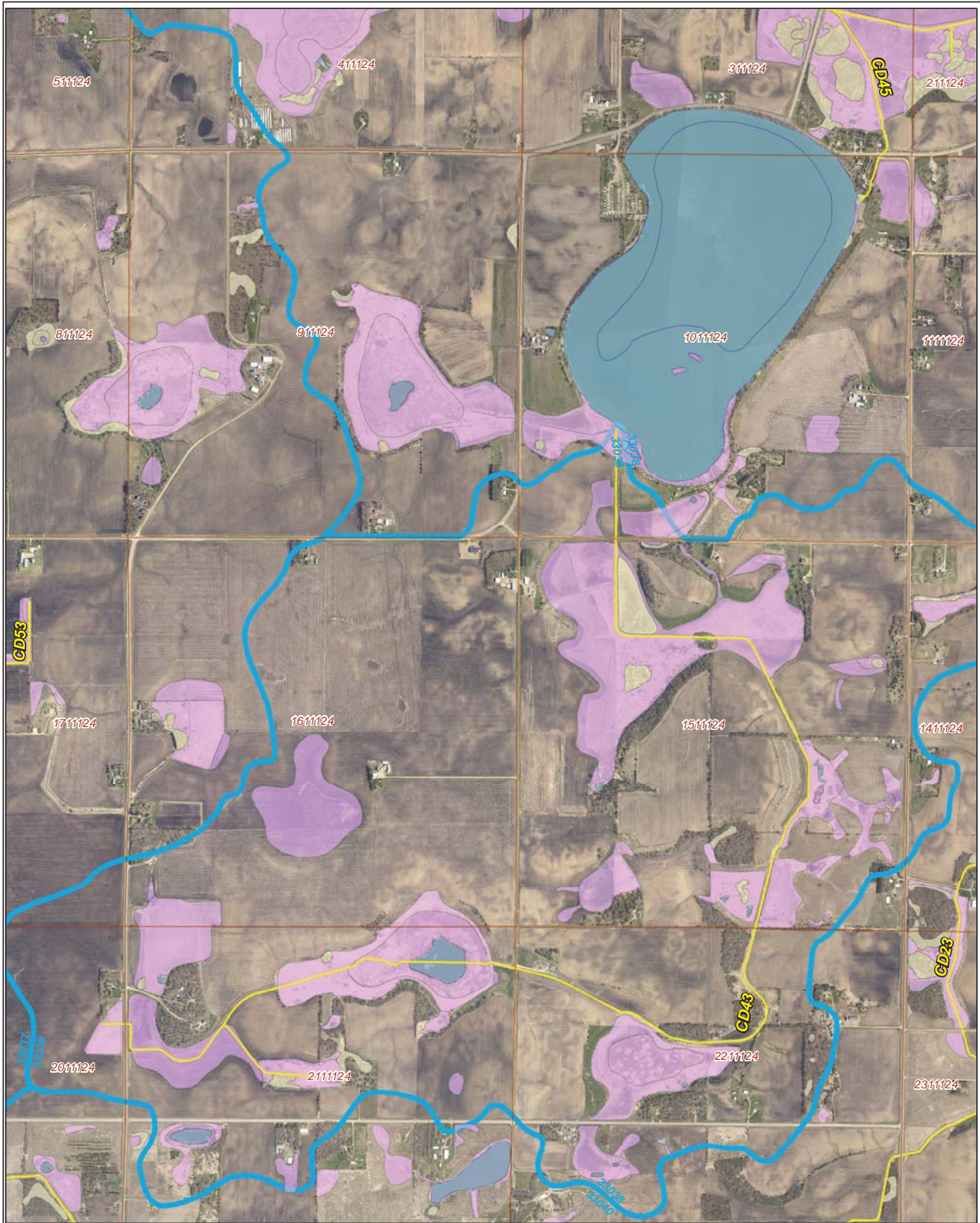
Ditch Name: CD43

Legend

- DNR Public Lakes and Basins
- DNR Rivers and Streams
- Sections
- Cities
- Ditches
- Ditch Watershed

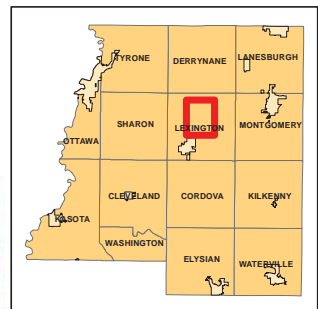
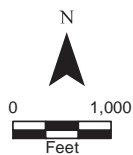


2015 Wetland Inventory

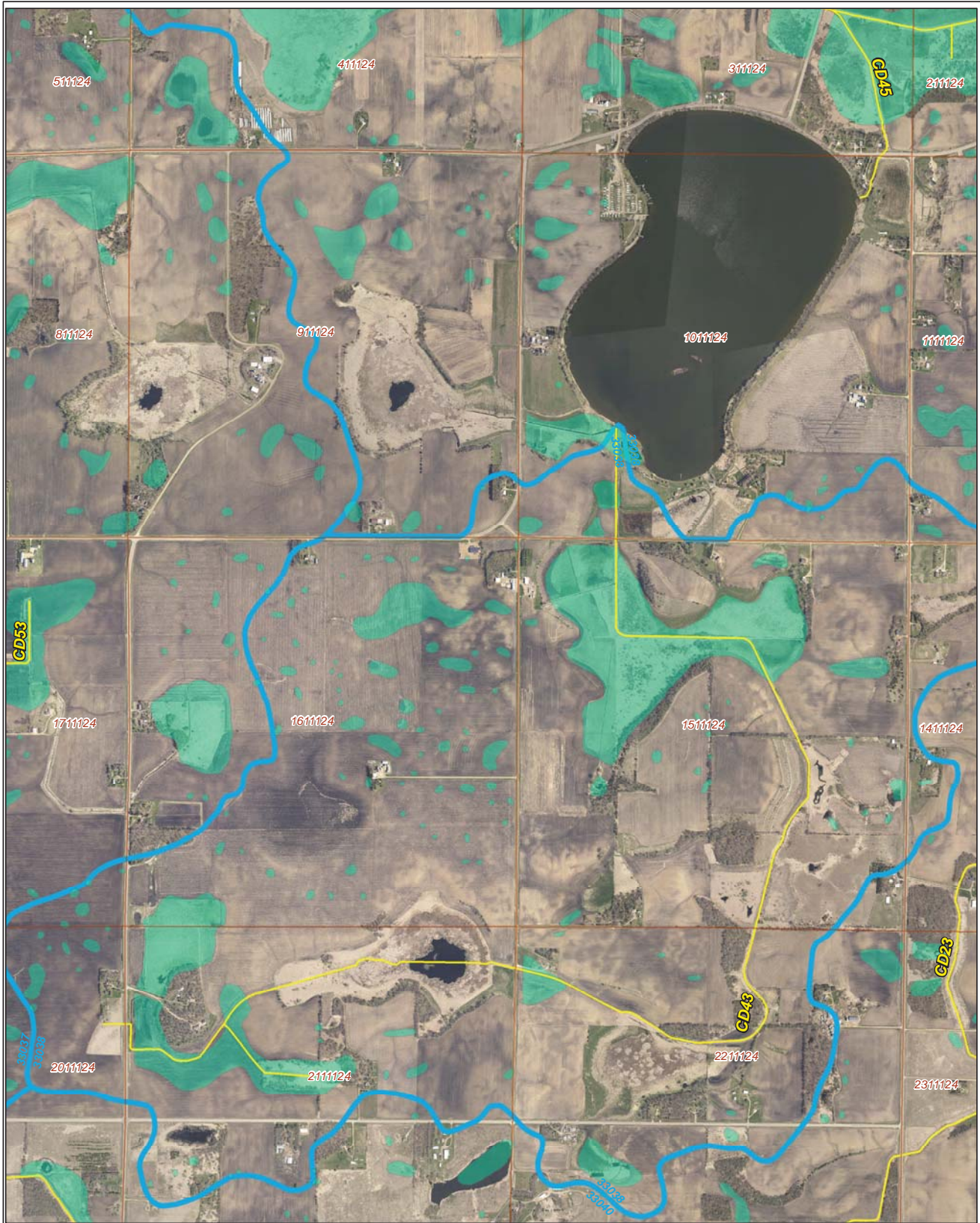


Ditch Name: CD43

Legend	
Wetland Type	
	Freshwater Emergent Wetland
	Freshwater Forested/Shrub Wetland
	Freshwater Pond
	Lake
	Riverine
	Sections
	Ditches
	Ditch Watershed



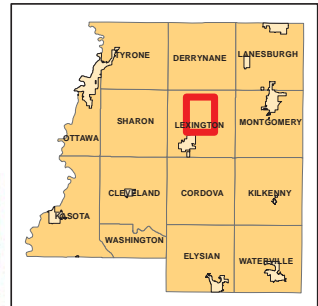
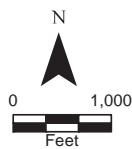
Restorable Wetlands



Ditch Name: CD43

Legend

- Retention Locations
- Sections
- Cities
- Ditches
- Ditch Watershed



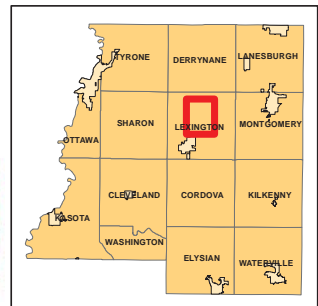
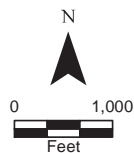
Ditch Buffer



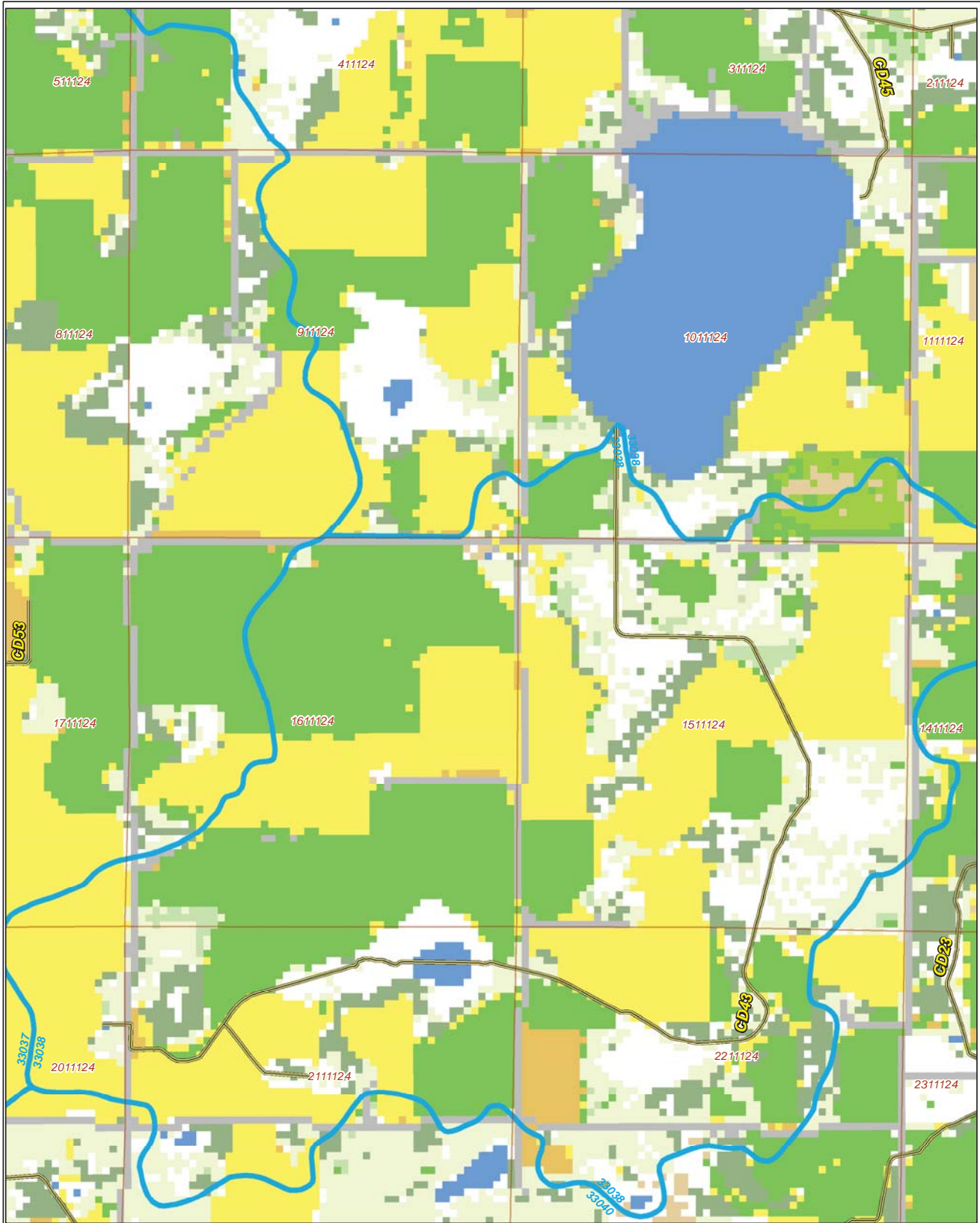
Legend

-  Ditches
-  Needs Buffer
-  Sections
-  Cities
-  Ditch Watershed

Ditch Name: CD43
Percent Buffered: 74.13%



2015 Crop Coverage



Ditch Name: CD43

Legend	
Coverage Type	
Open Water	Sections
Alfalfa	Other Hay/Non Alfalfa
Corn	Peas
Forest	Soybeans
Developed Area	Spring Wheat
Grass/Pasture	Sweet Corn
Ditch Watershed	Ditches

