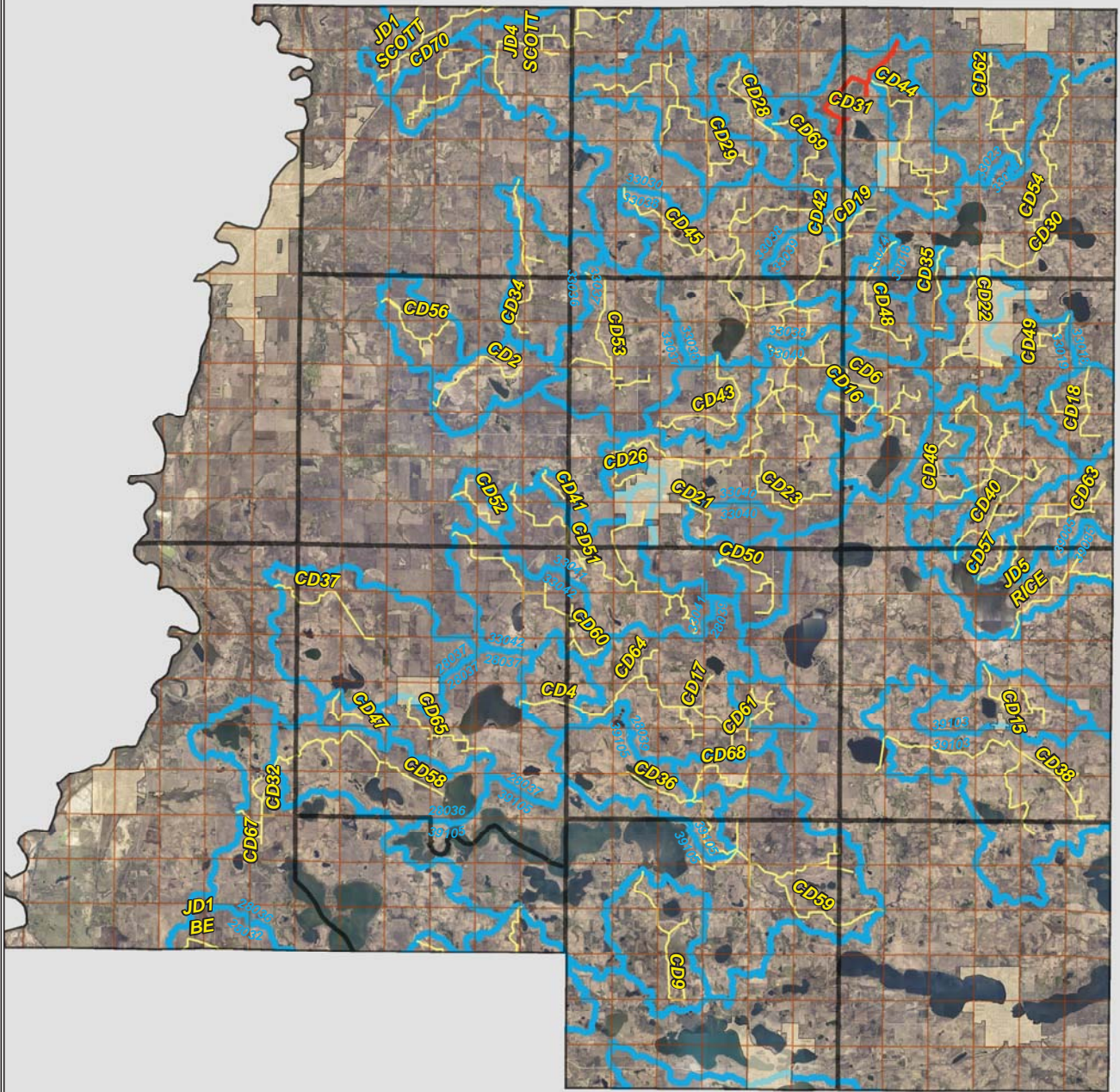


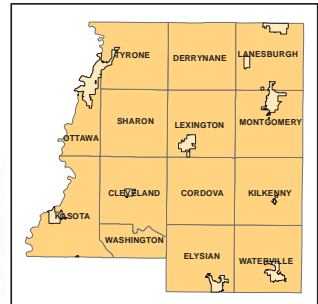
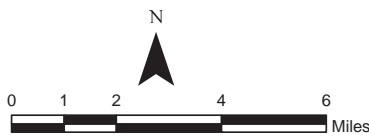
# CD 31

LO PAYS FOR CULVERTS



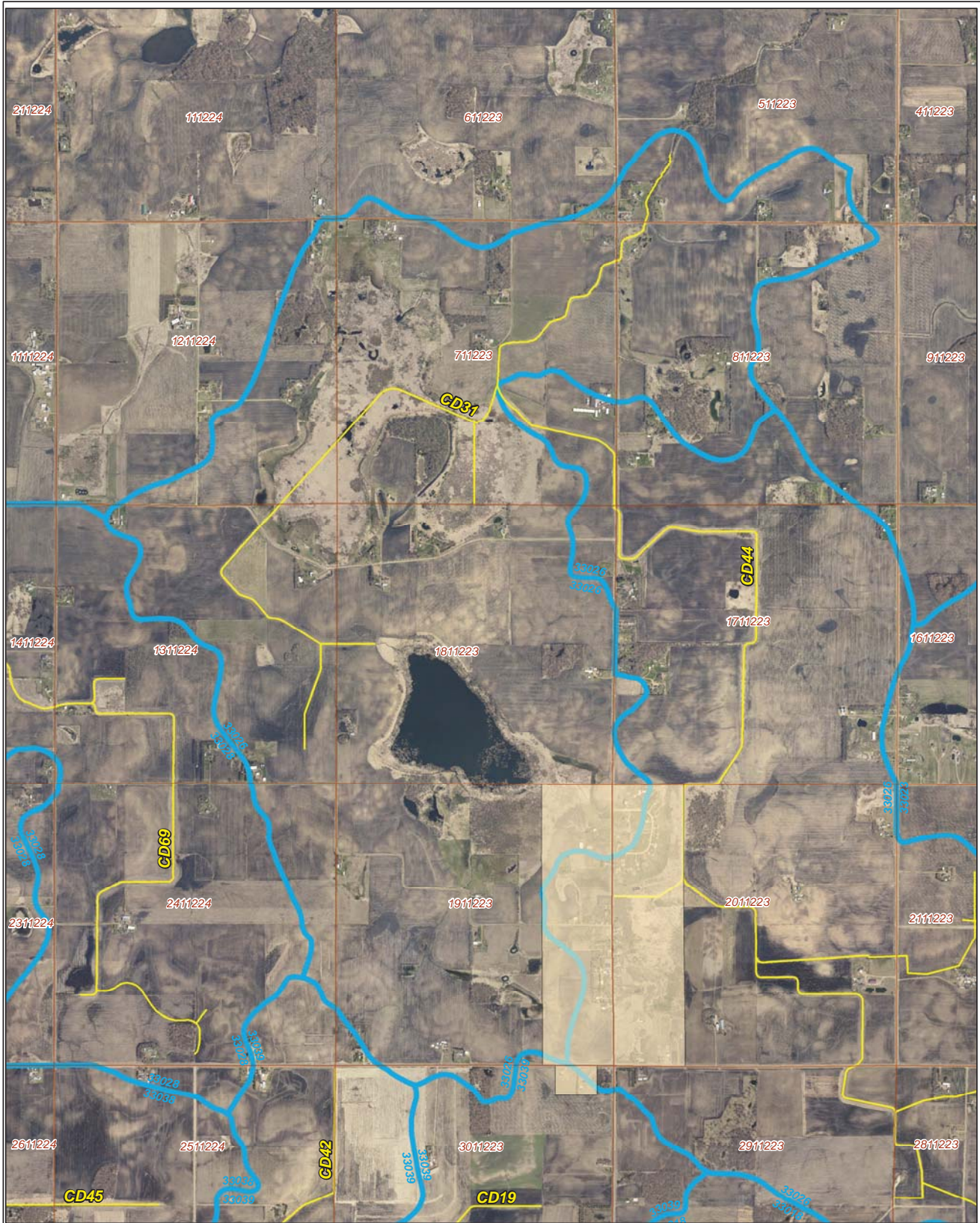
**Legend**

- Sections
- Cities
- Ditches**
- 
- 
- Ditch Watershed









# Ditch Watershed



**Legend**

-  Sections
-  Cities
-  Ditches
-  Ditch Watershed

Ditch ID: 33026CD31  
Acres: 2804.17

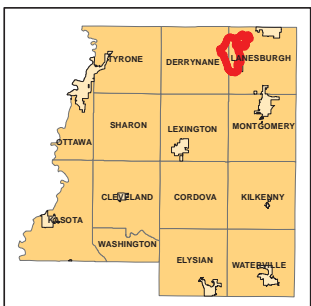


Le Sueur County

N

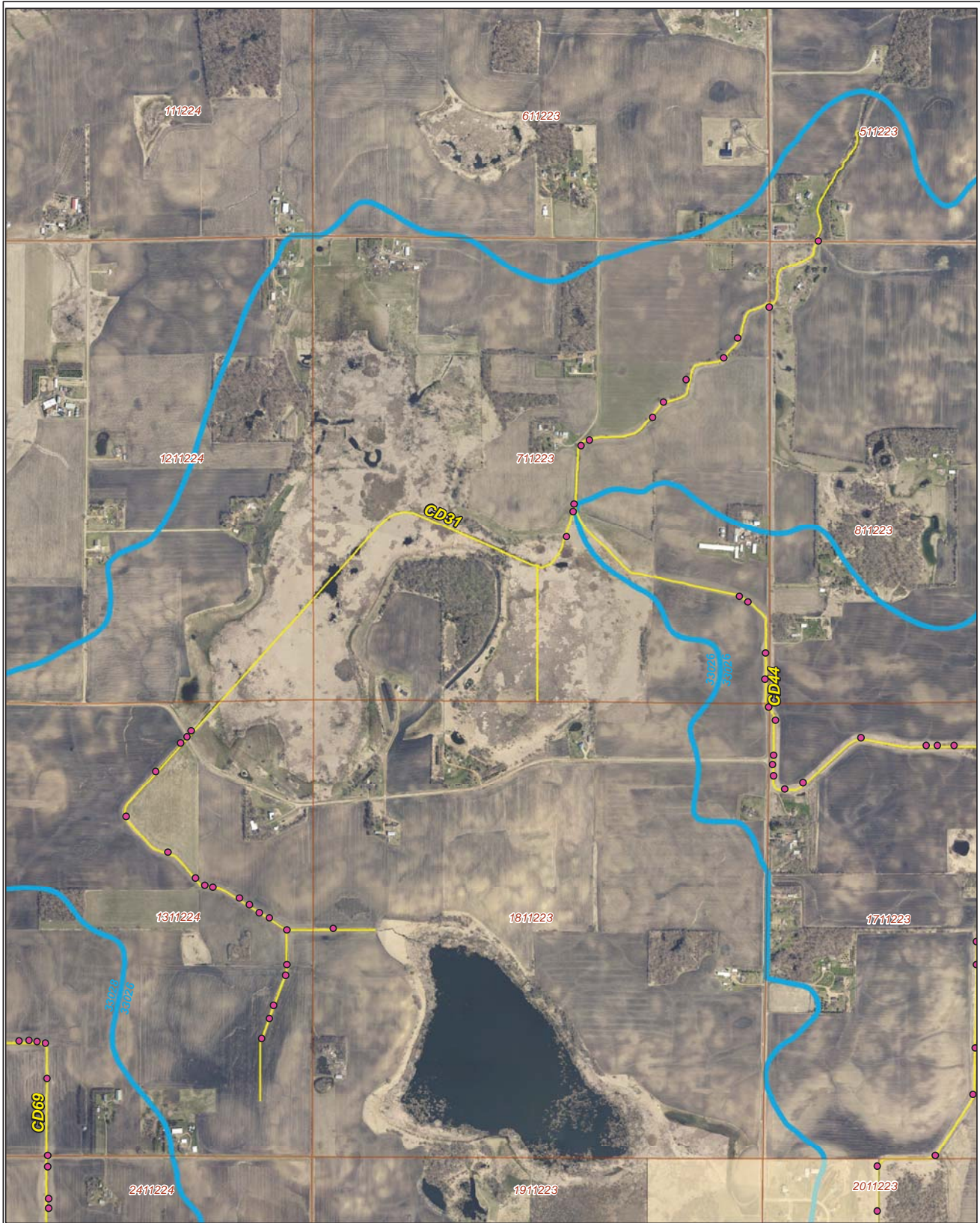


0 1,000  
Feet





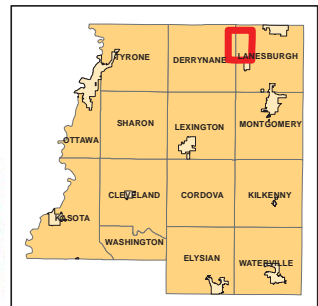
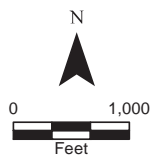
# 2006 Ditch Inventory



## Legend

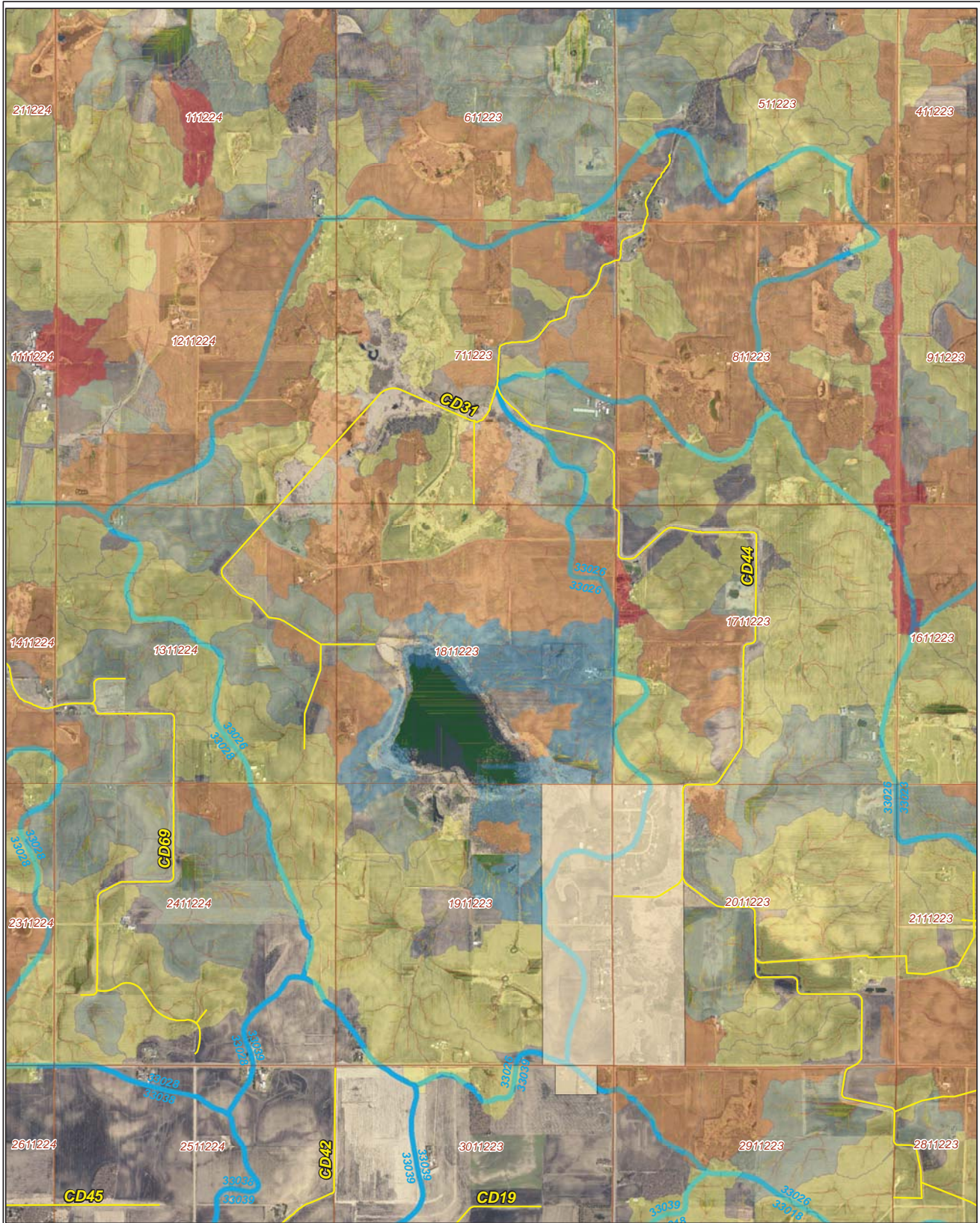
- Ditch Inventory
- Sections
- Cities
- Ditches
- Ditch Watershed

Ditch Name: CD31



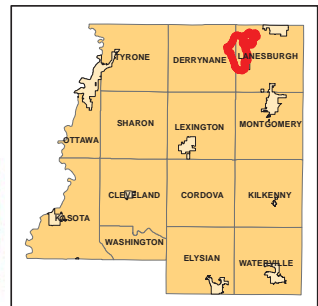
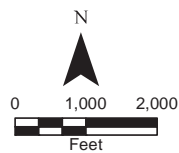


# High Priority - Stream Power Index Sites



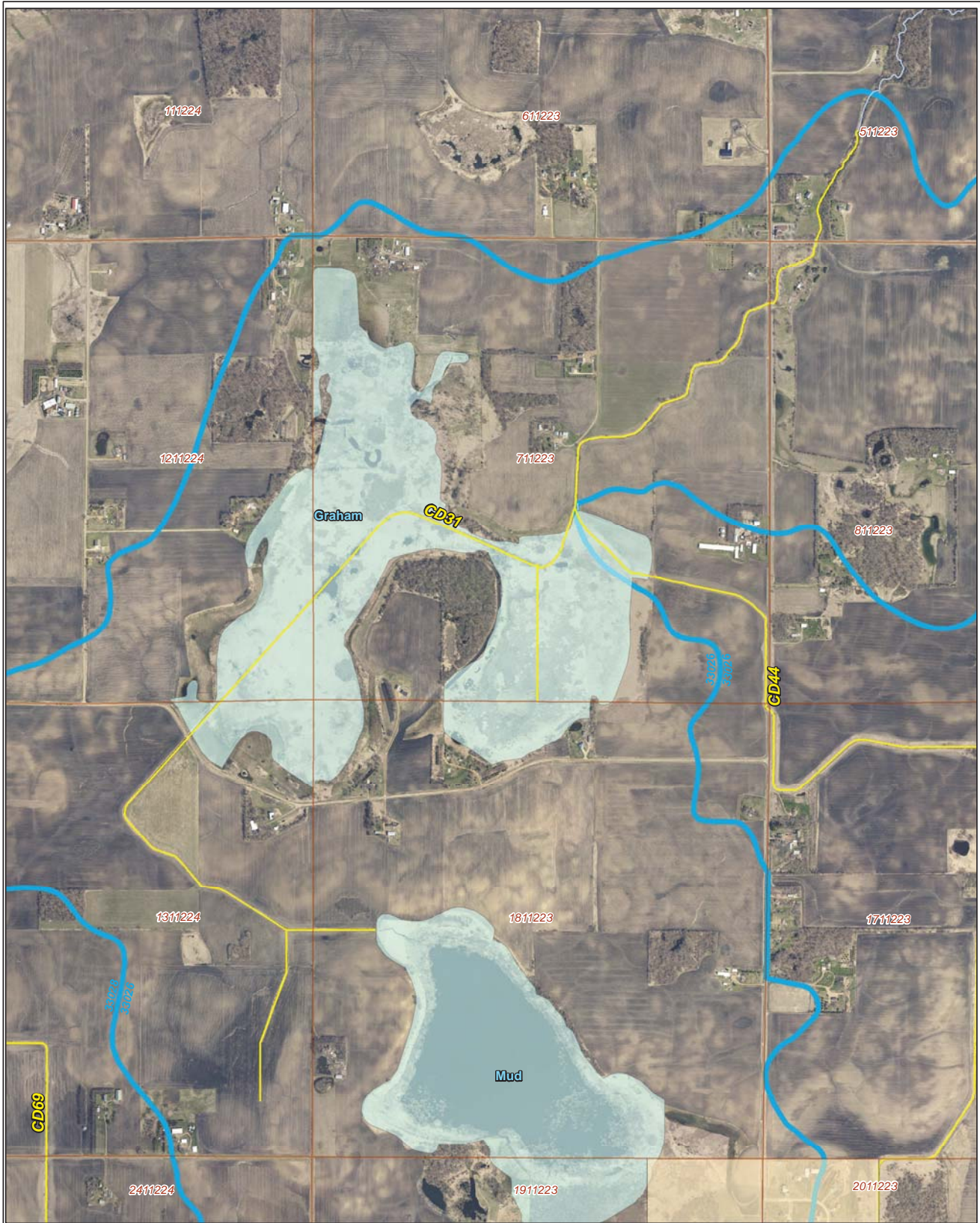
Ditch Name: CD31

Legend		
<b>Mean SPI Rank</b>	<b>Combined Sediment and SPI Rank</b>	Ditches
Low	Low	Sections
Low/Moderate	Low/Moderate	Cities
Moderate	Moderate	Ditch Watershed
High/Moderate	Moderate/High	
High	High	





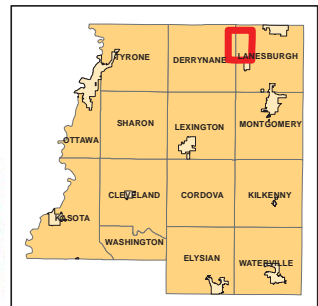
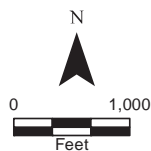
# DNR Public Waters



Ditch Name: CD31

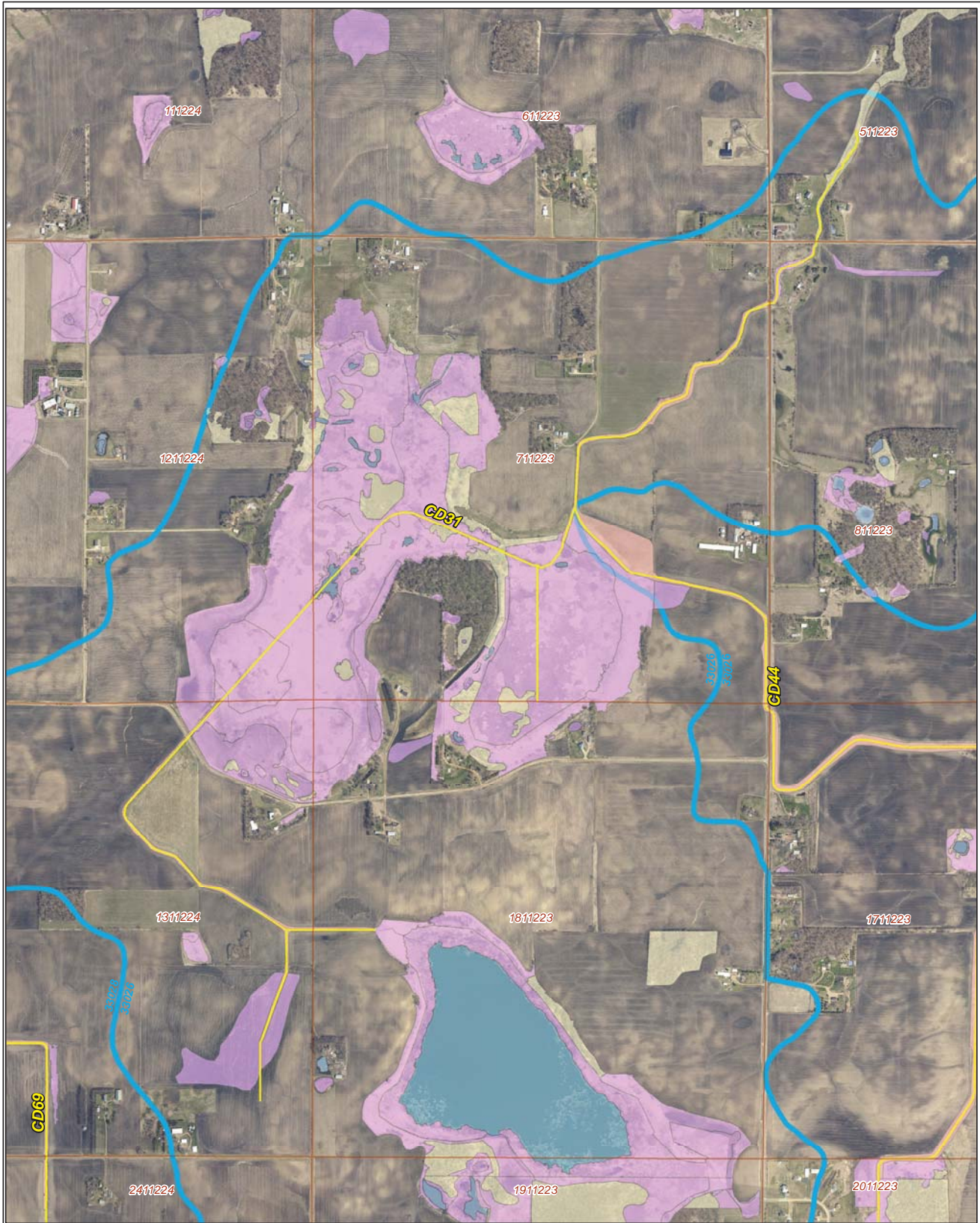
## Legend

- DNR Public Lakes and Basins
- DNR Rivers and Streams
- Sections
- Cities
- Ditches
- Ditch Watershed



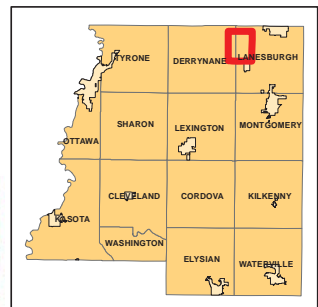
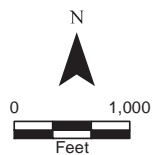


# 2015 Wetland Inventory



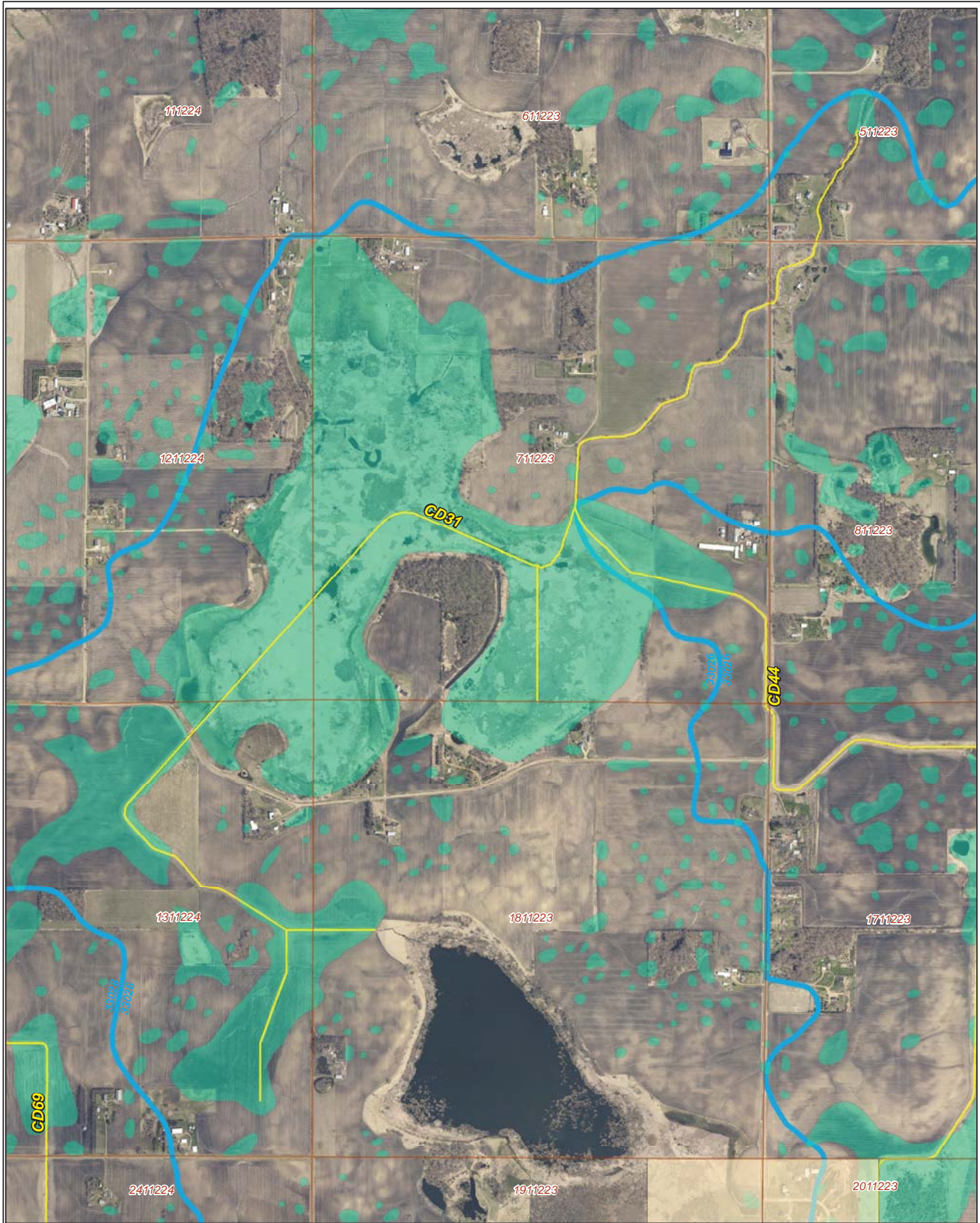
Ditch Name: CD31

Legend	
<b>Wetland Type</b>	
	Freshwater Emergent Wetland
	Freshwater Forested/Shrub Wetland
	Freshwater Pond
	Lake
	Riverine
	Sections
	Ditches
	Ditch Watershed





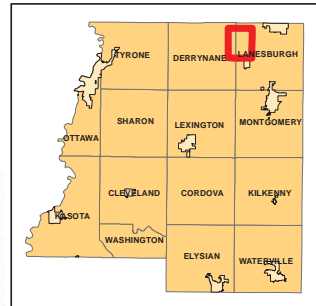
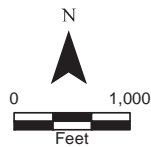
# Restorable Wetlands



Ditch Name: CD31

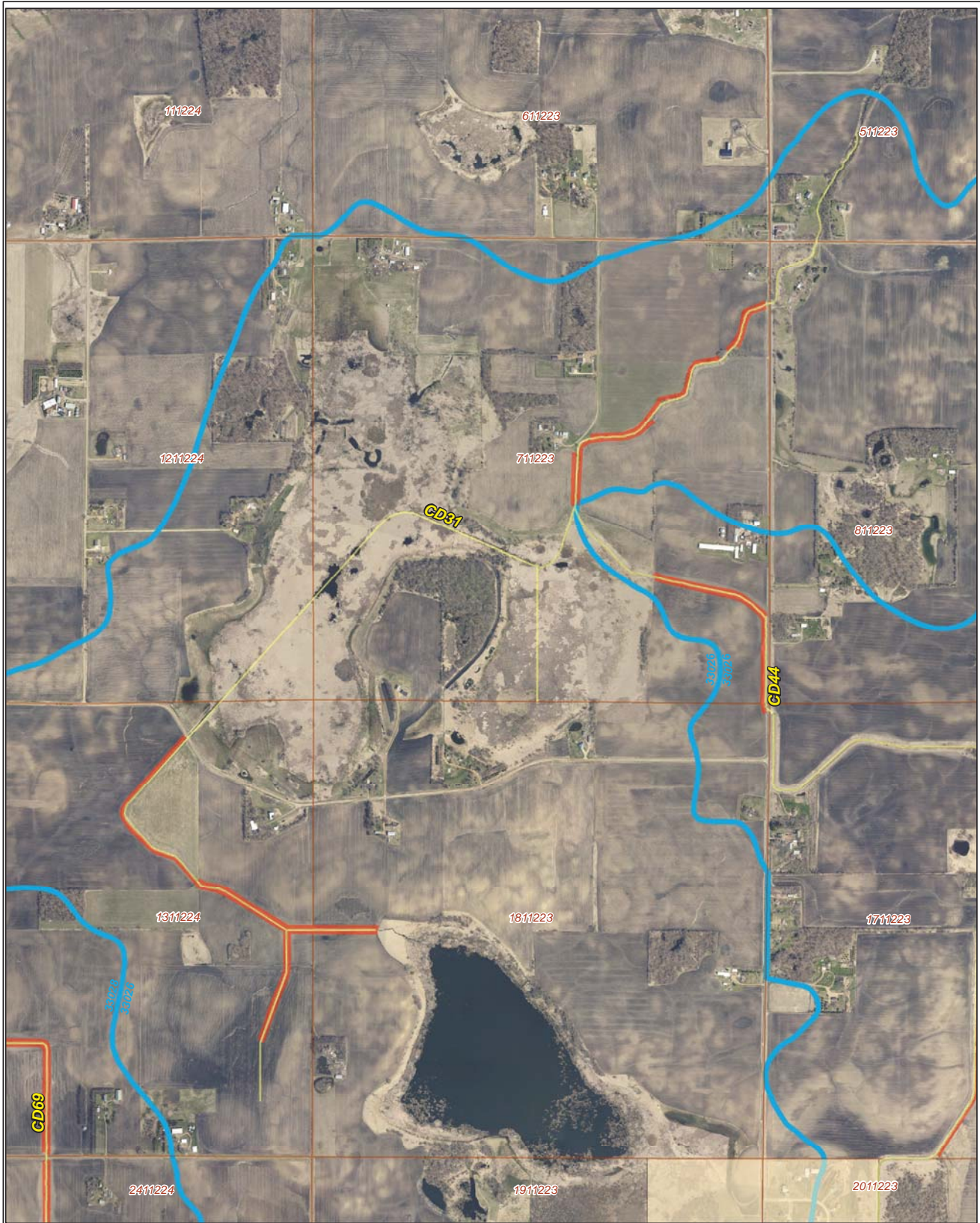
## Legend

- Retention Locations
- Sections
- Cities
- Ditches
- Ditch Watershed





# Ditch Buffer



## Legend

-  Ditches
-  Needs Buffer
-  Sections
-  Cities
-  Ditch Watershed

Ditch Name: CD31  
Percent Buffered: 63.47%

